

The Cardio-

VASCULAR

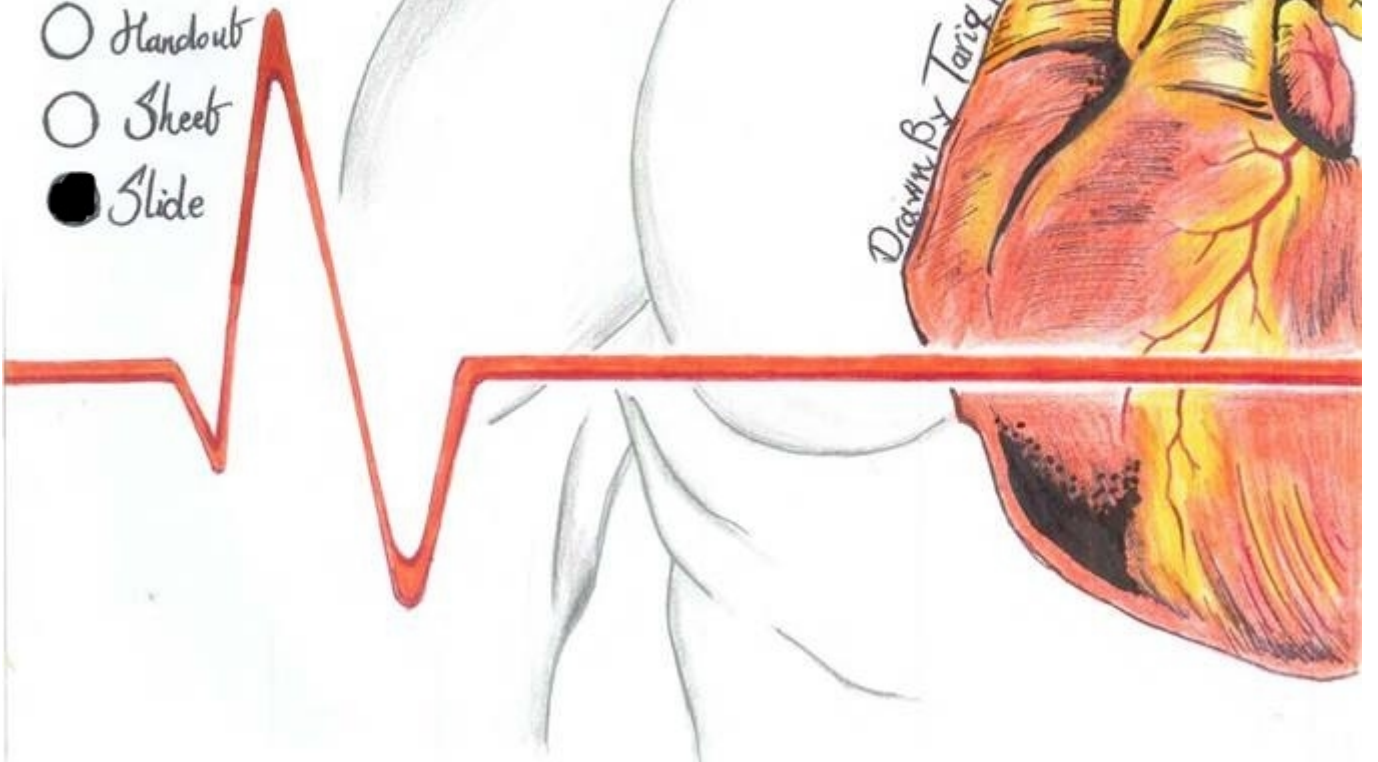
System

- Anatomy
- Histology
- Pathology
- Pharmacology
- Physiology
- Microbiology

Lec #: **Lab**
Dr. Name: **Faraj**
Done By:

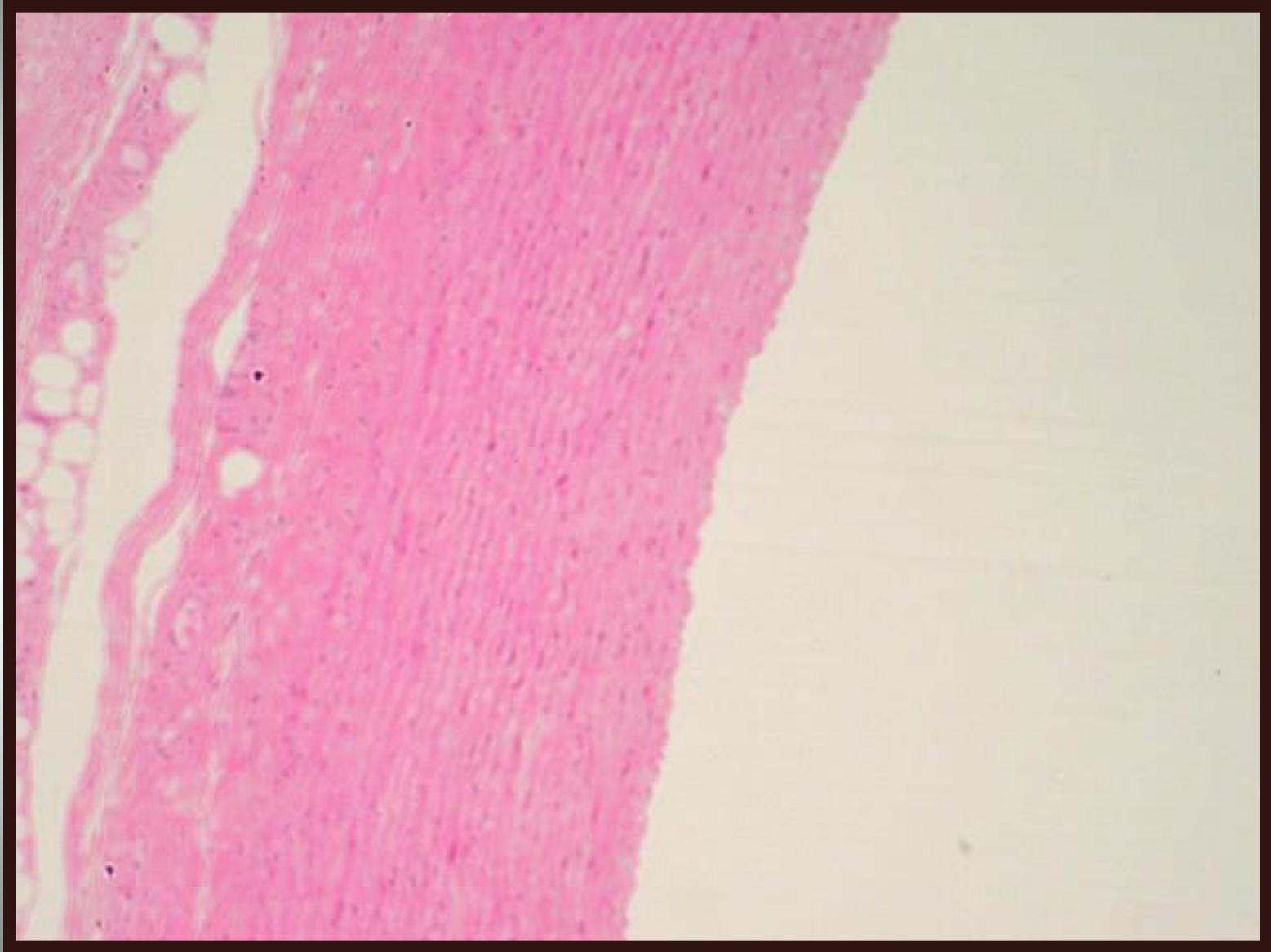
- Handout
- Sheet
- Slide

Drawn by Tarig Bushnaq

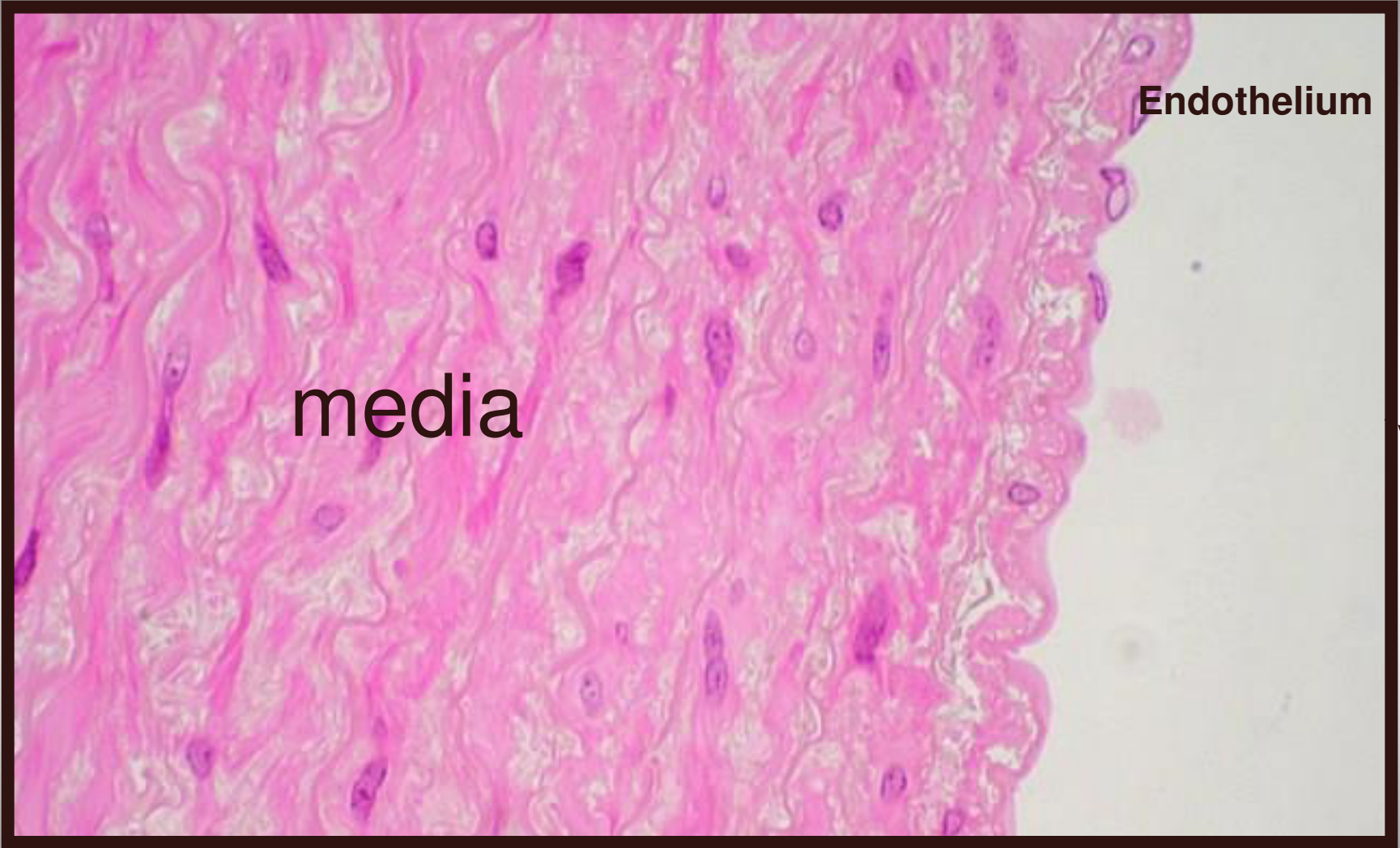


Cardiovascular system

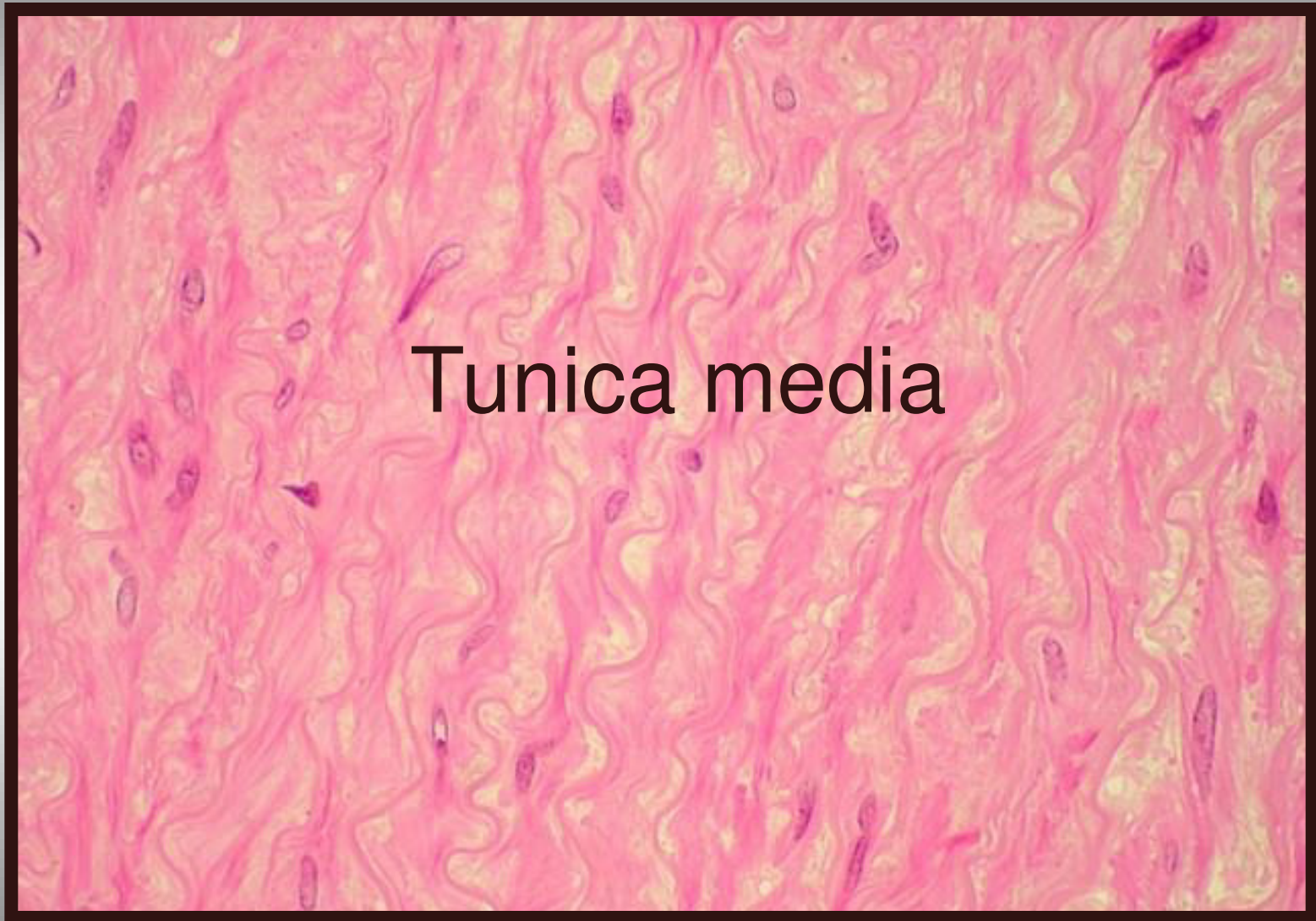
Elastic Artery (**aorta**) (H&E stain)



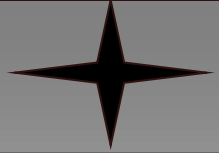
Tunica intima (**aorta**)



Elastic artery



Tunica media



Vasa vasorum

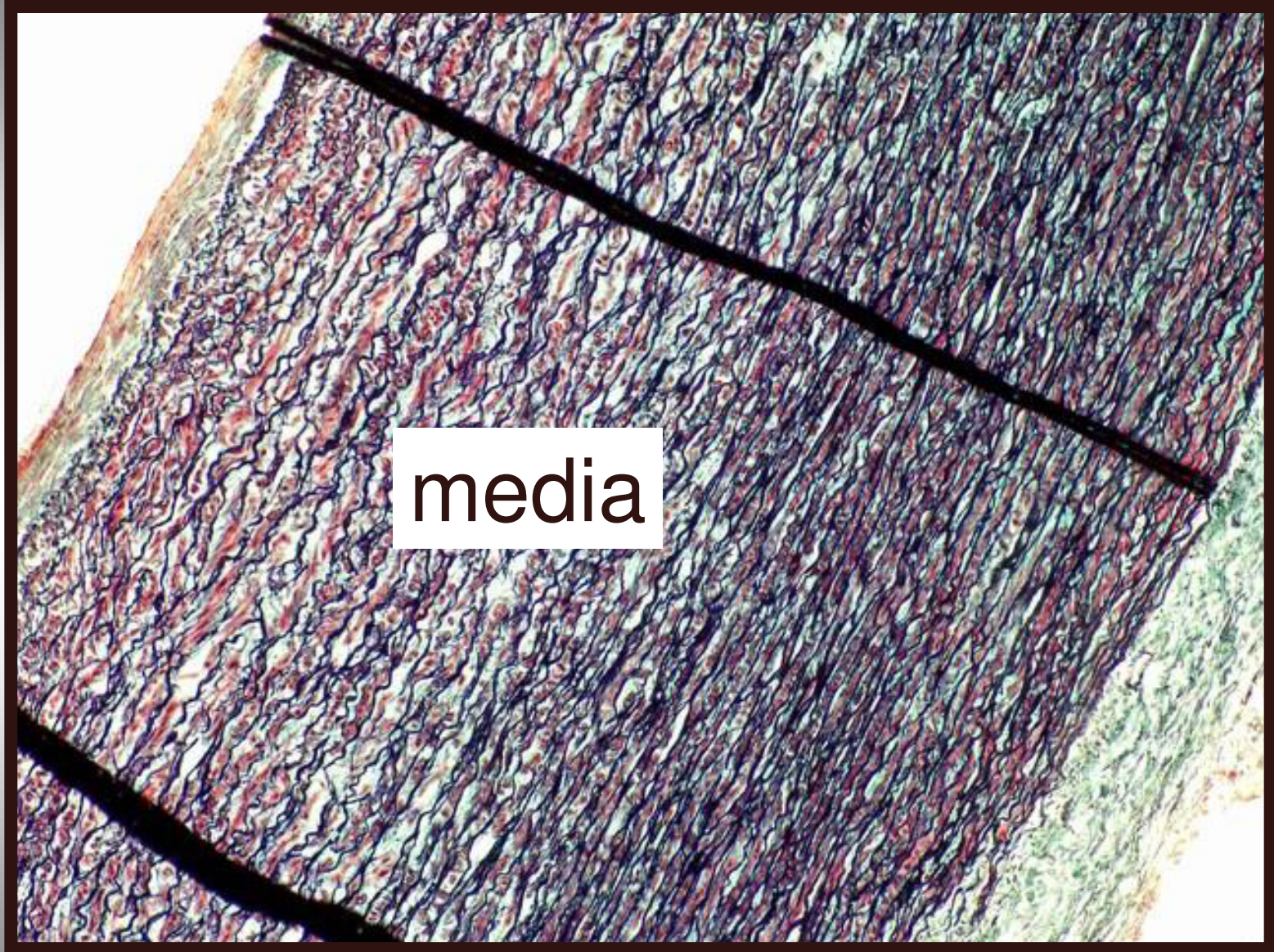


adventitia

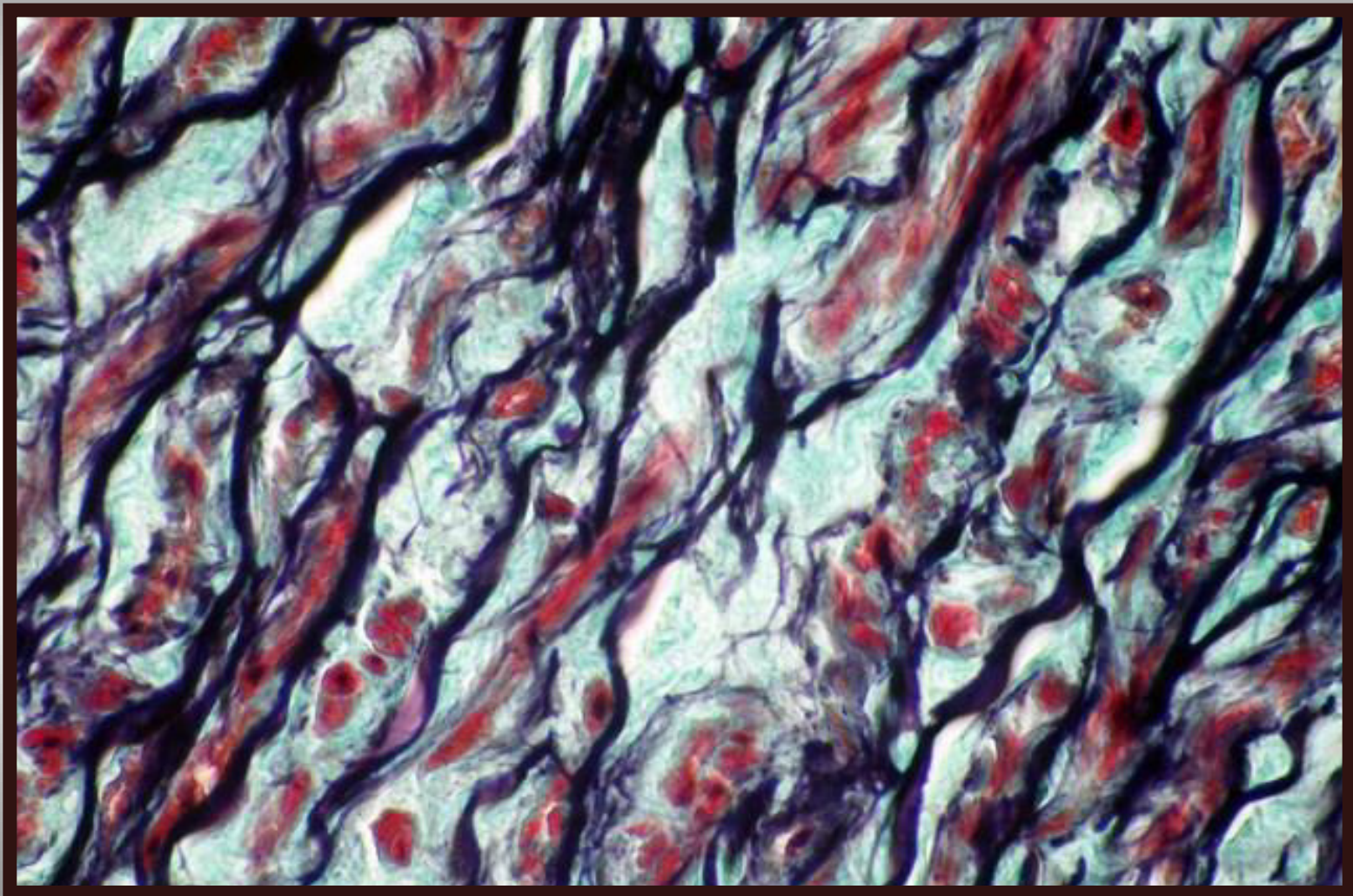


media

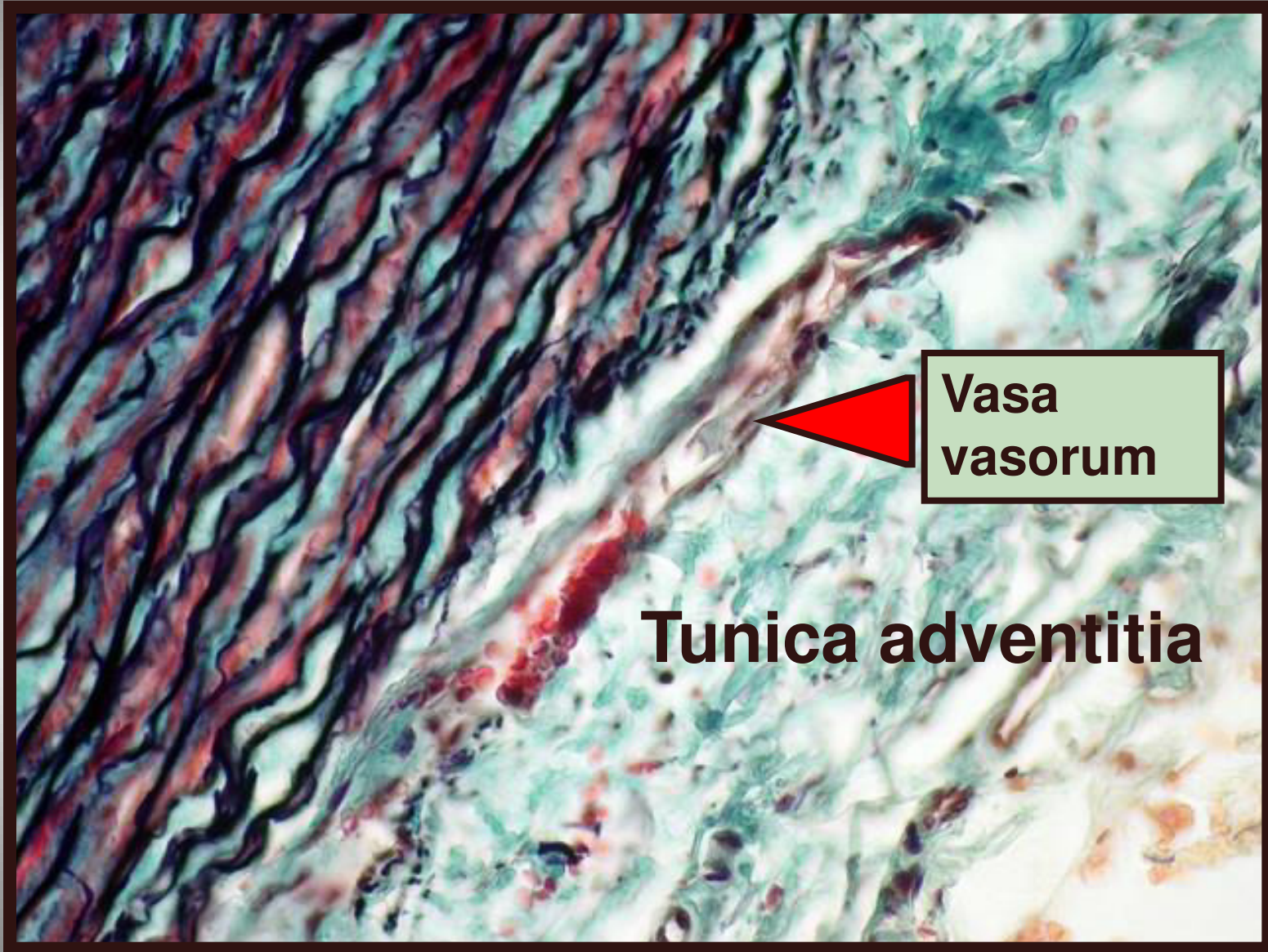
Masson's trichrome stain (aorta)



Black=elastic lamina, Red=smooth muscle
Green=collagen



Elastic artery

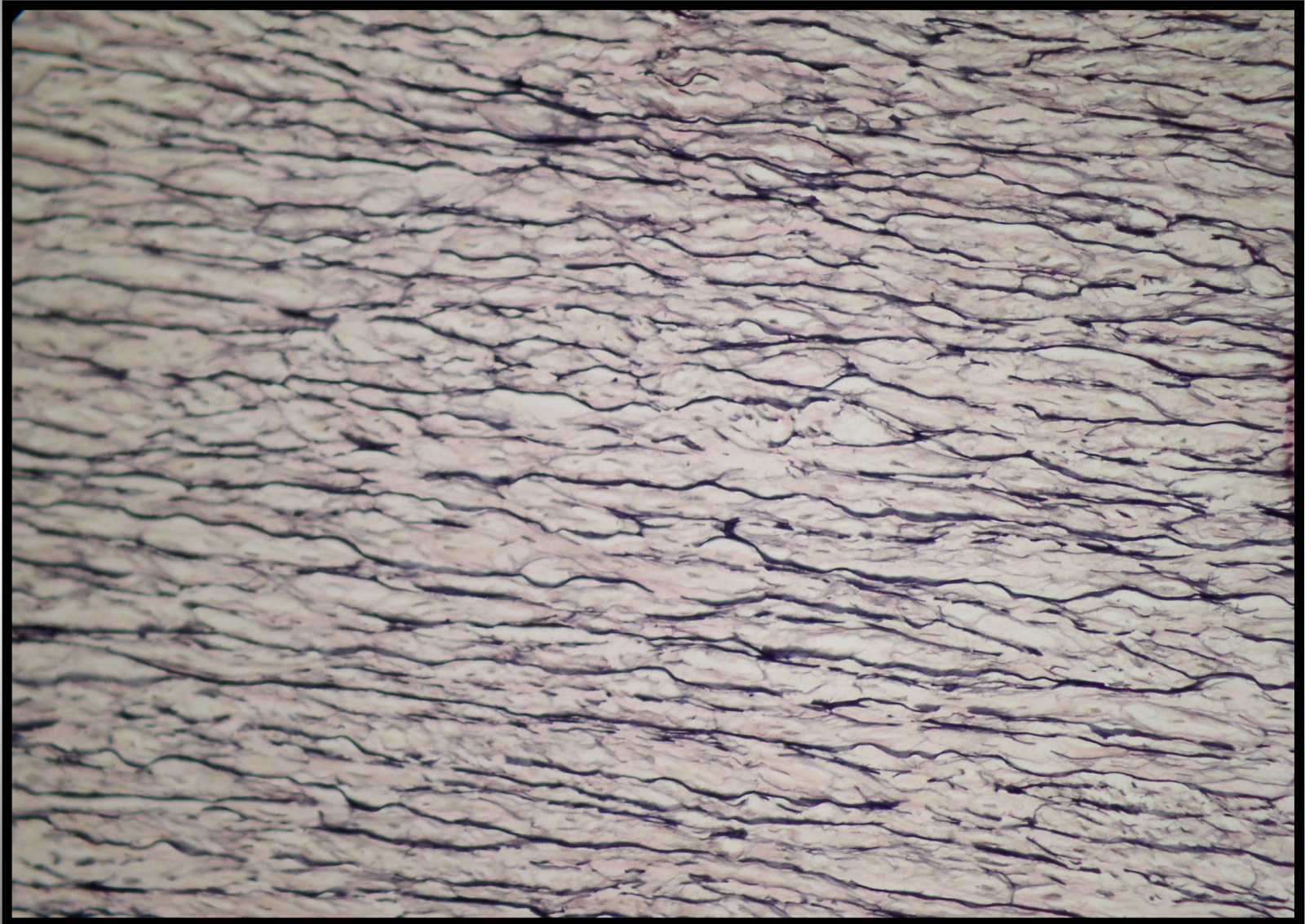


Vasa
vasorum

Tunica adventitia

Elastic artery (van Gieson stain)

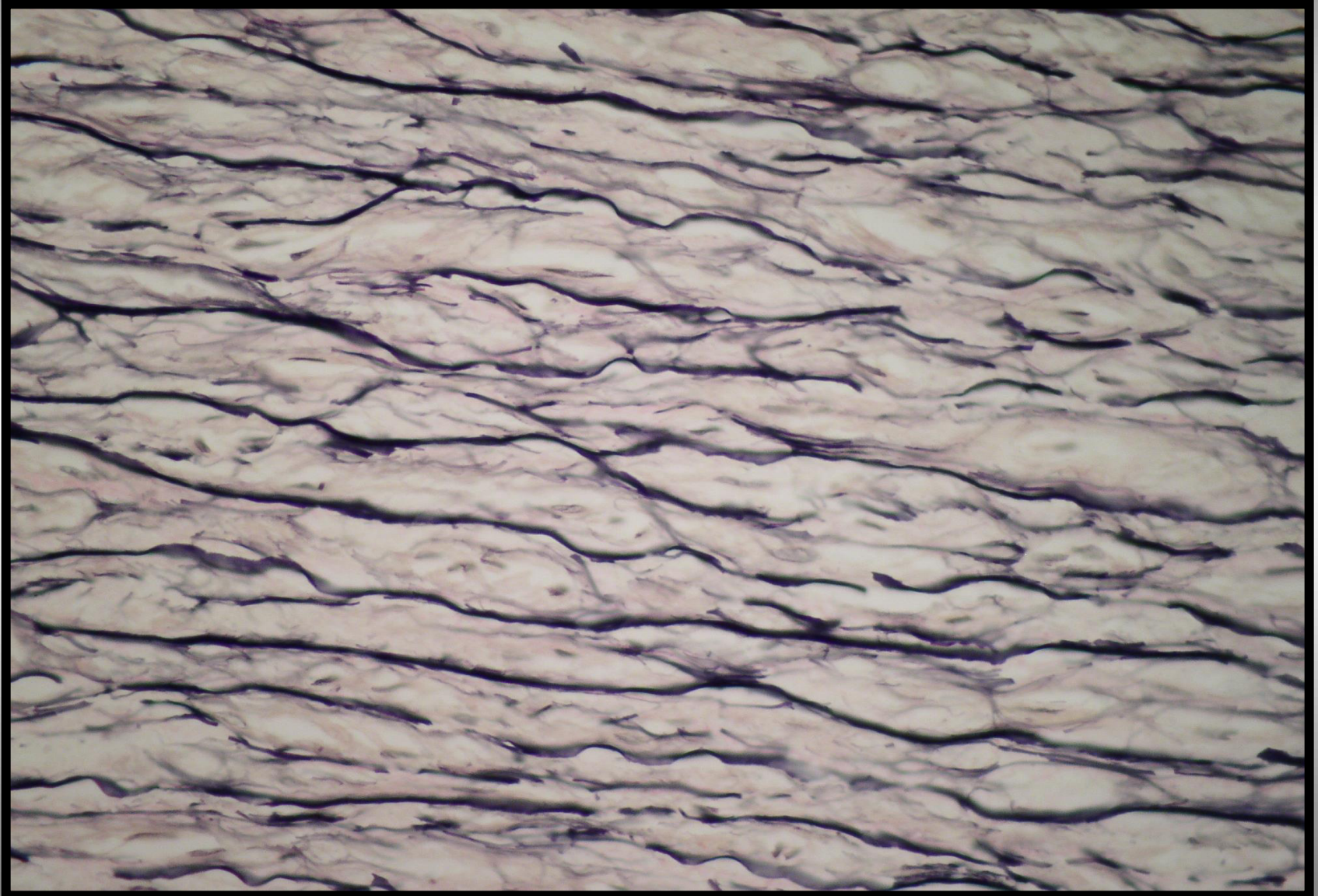
TUNICA MEDIA



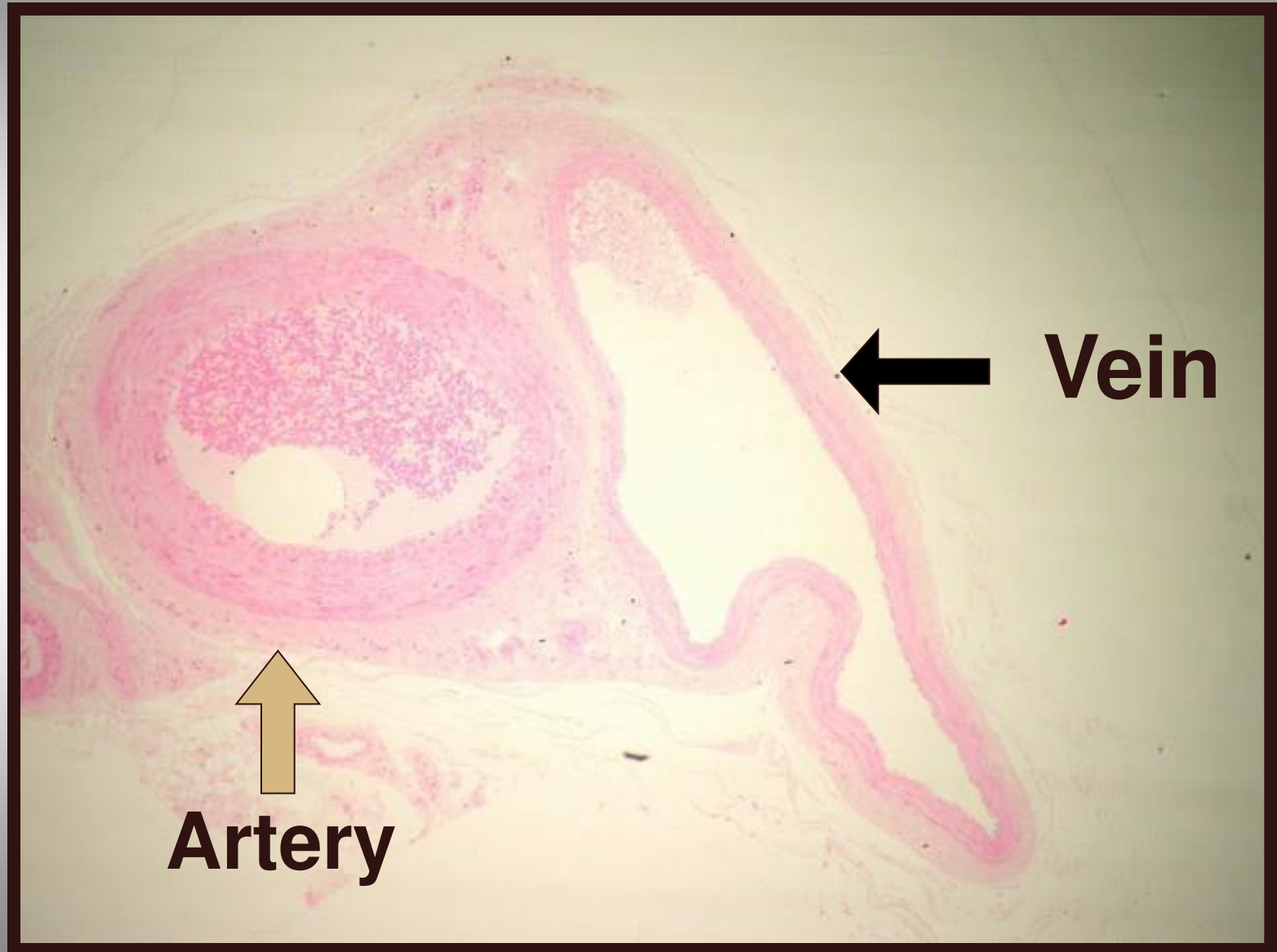
Tunica Media

Elastic lamina=black

Connective tissue=pink



Medium sized (Vein and Artery)



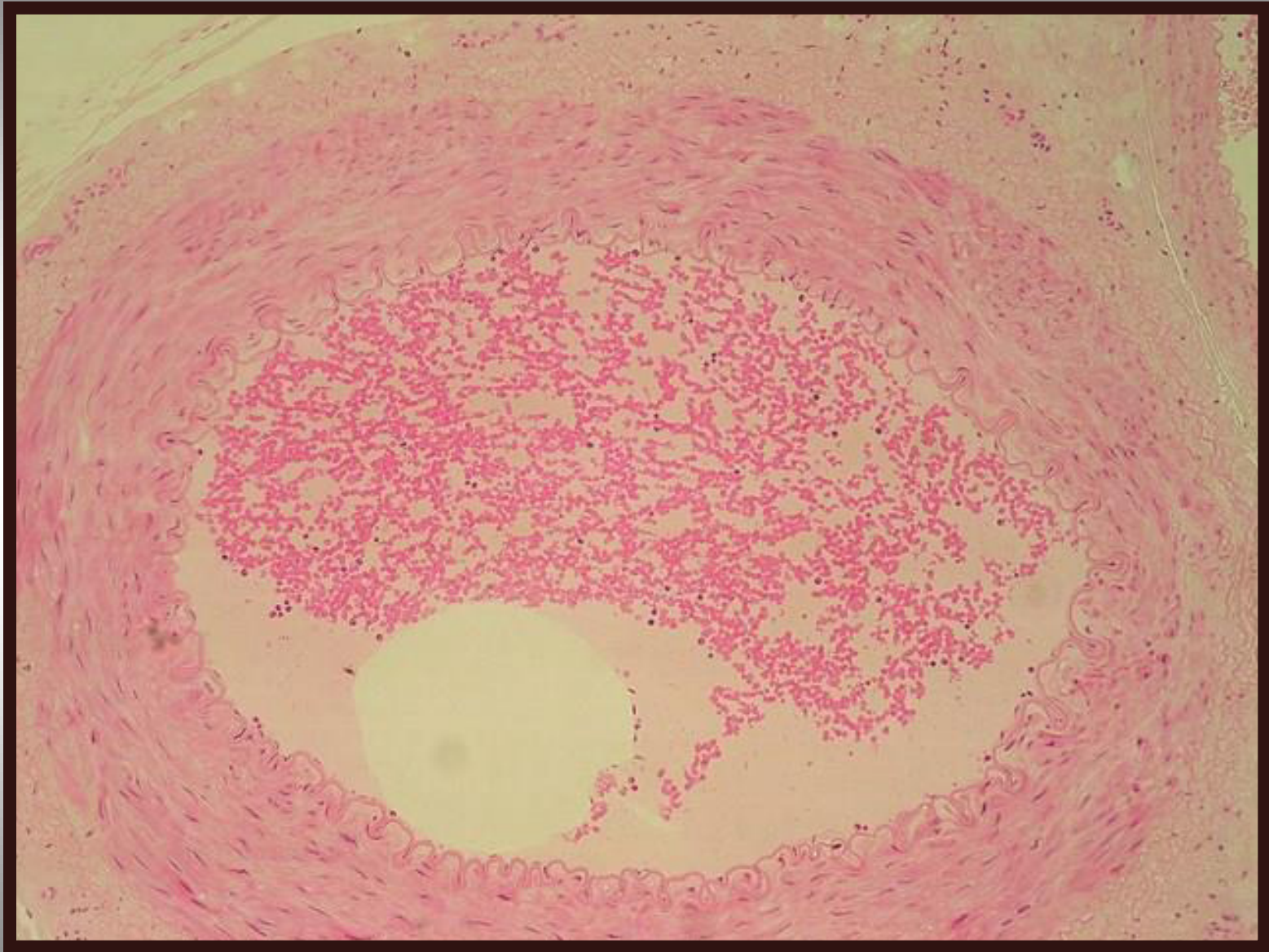
Medium sized



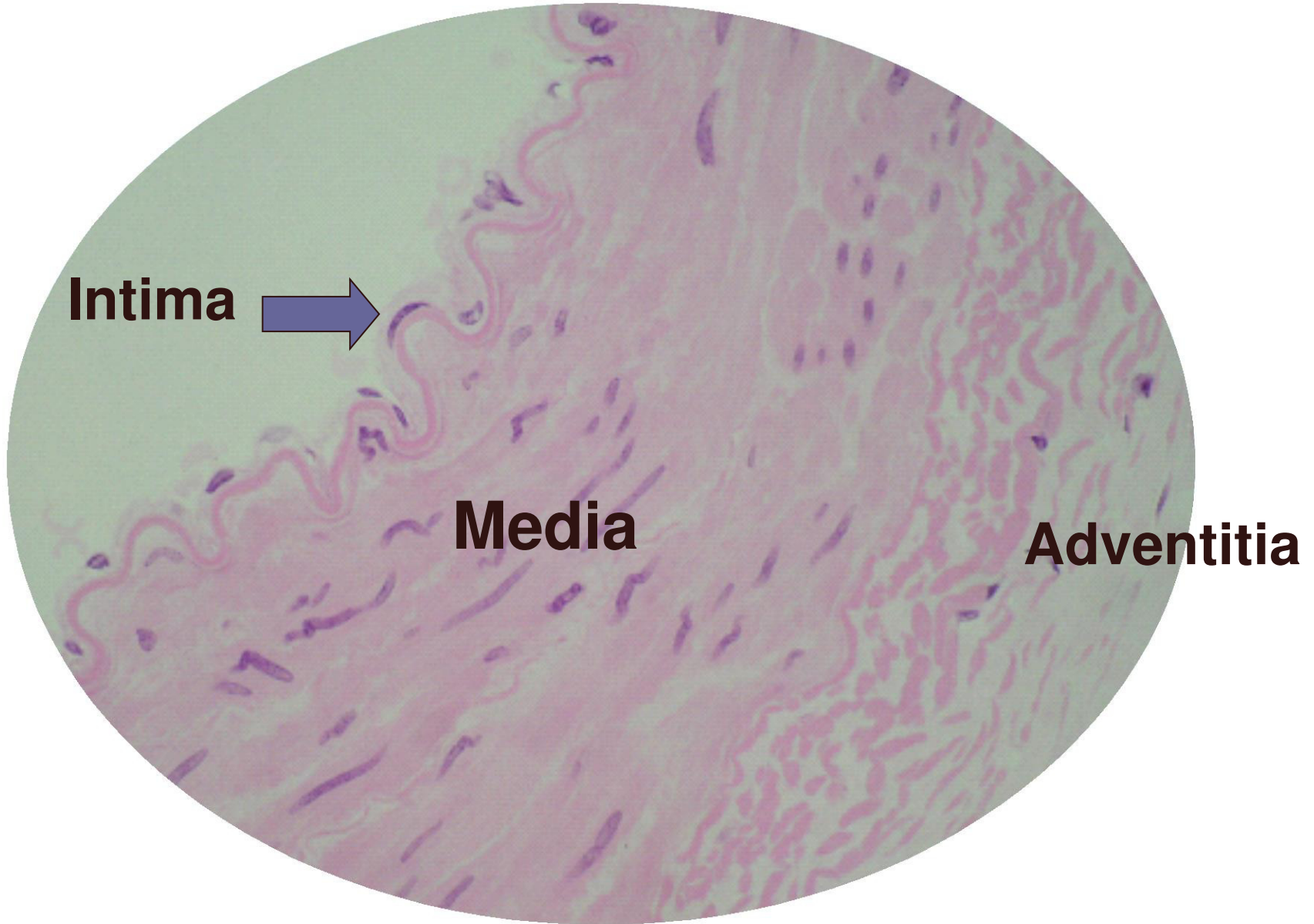
artery

vein

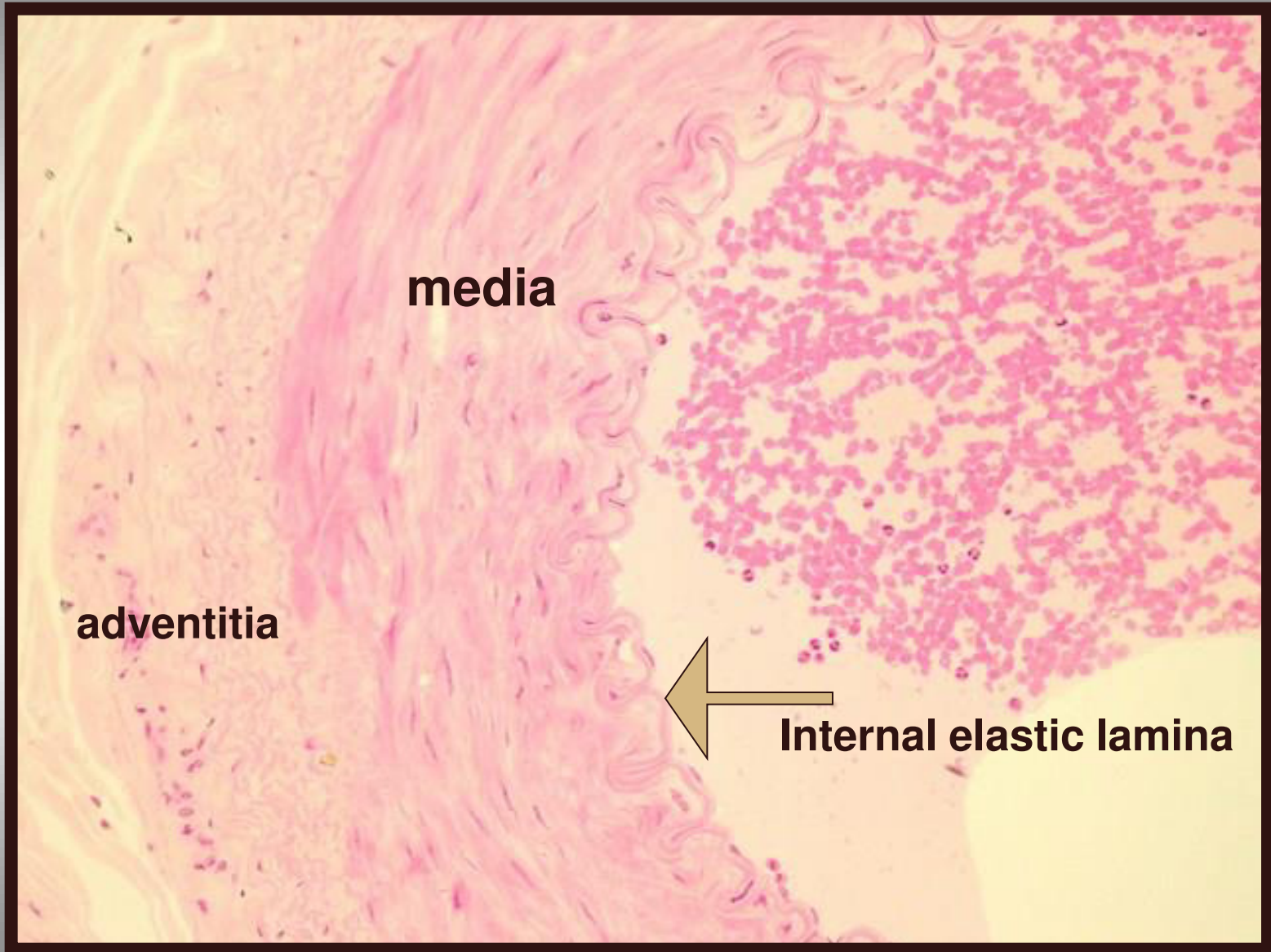
Muscular artery (medium sized)

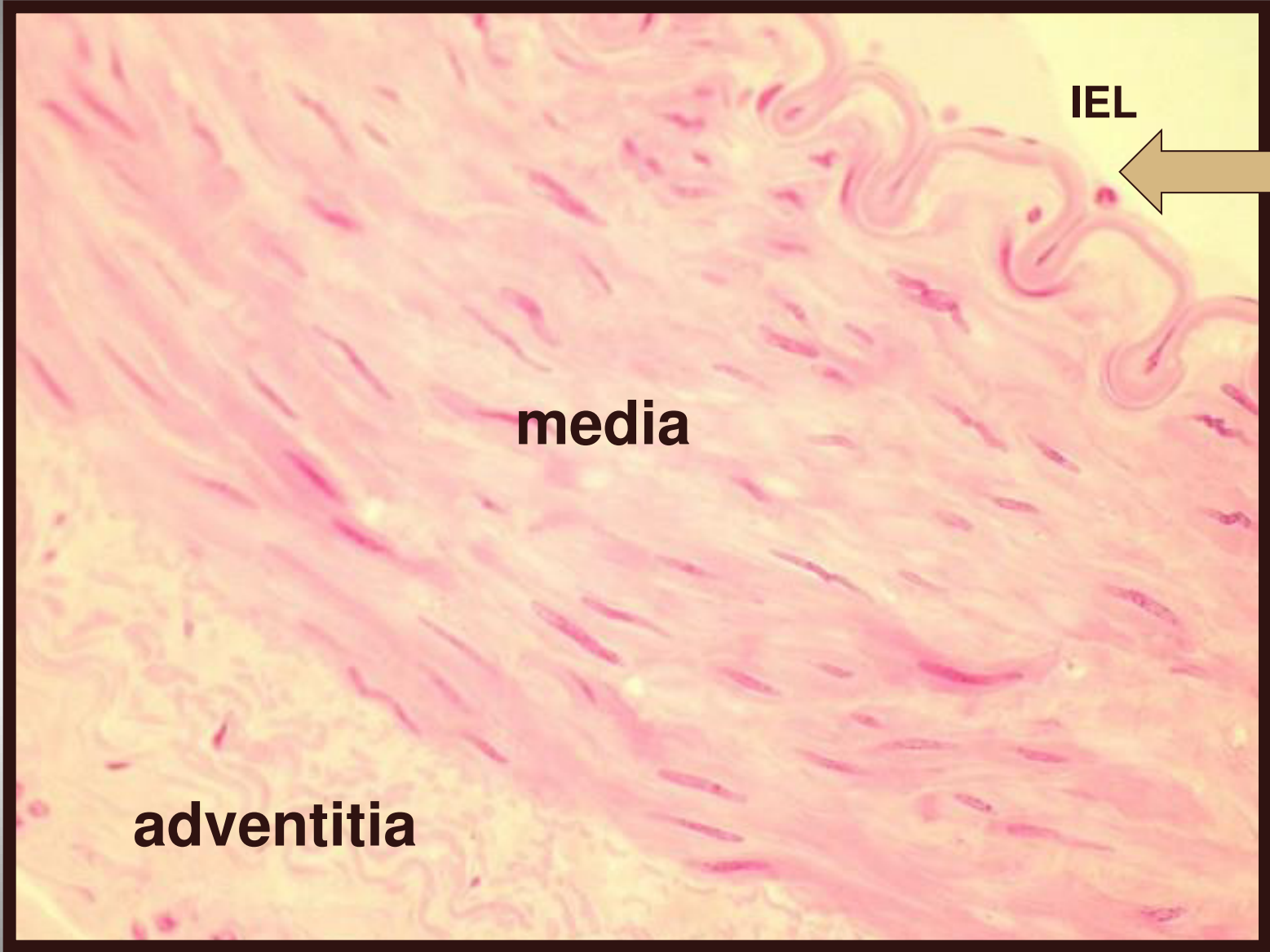


Muscular artery

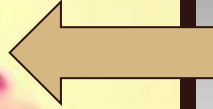


Muscular artery





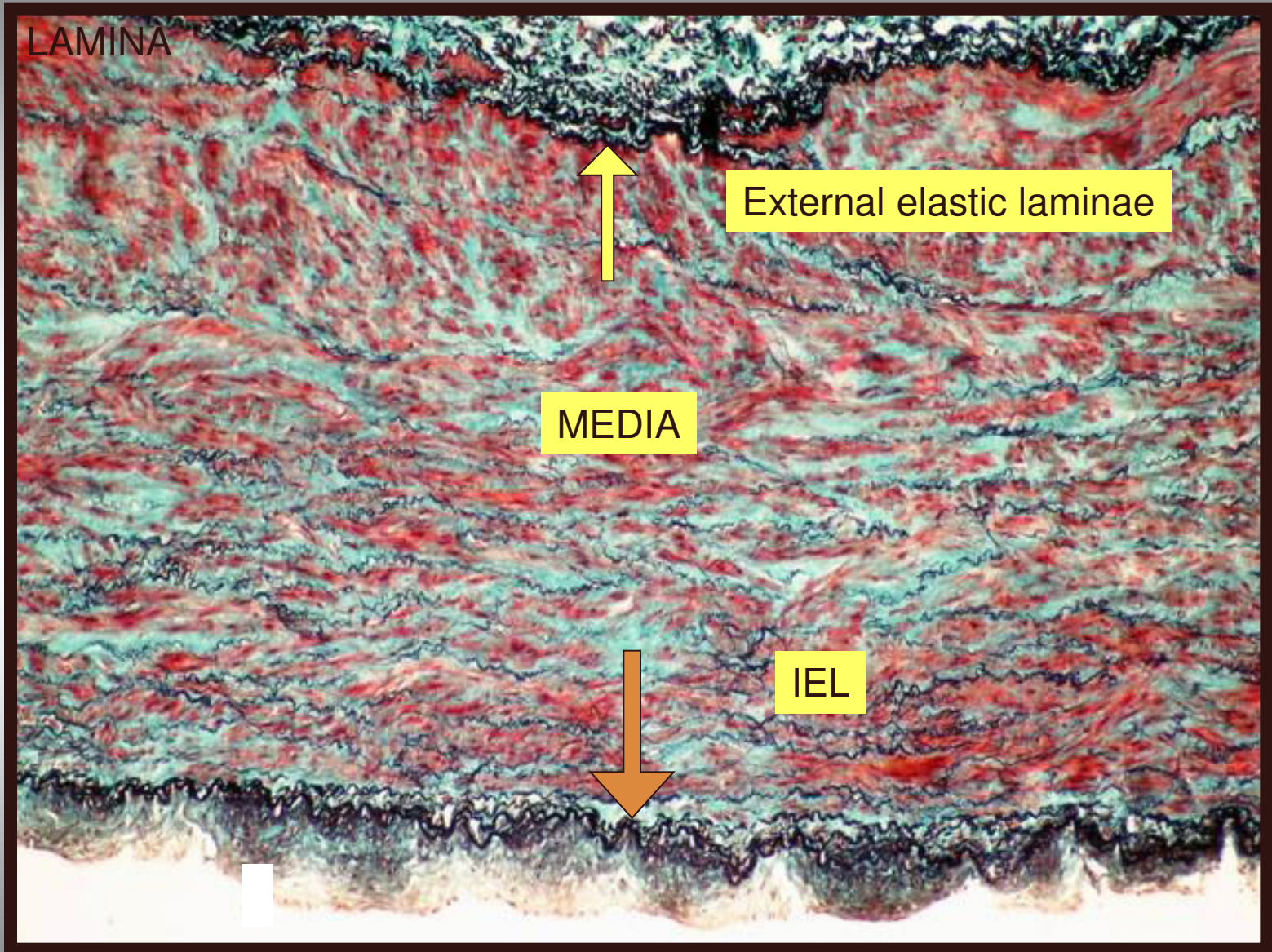
IEL



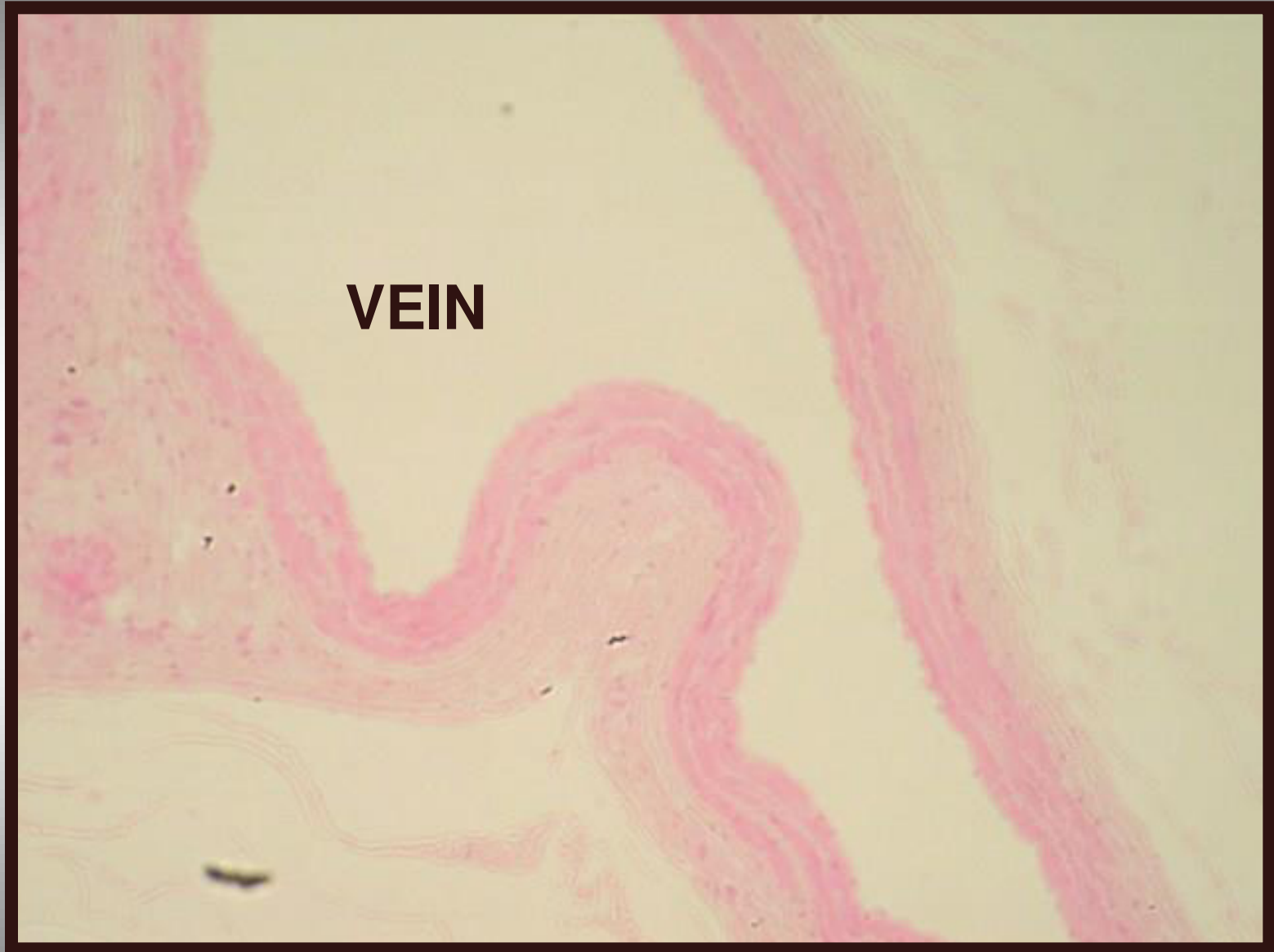
media

adventitia

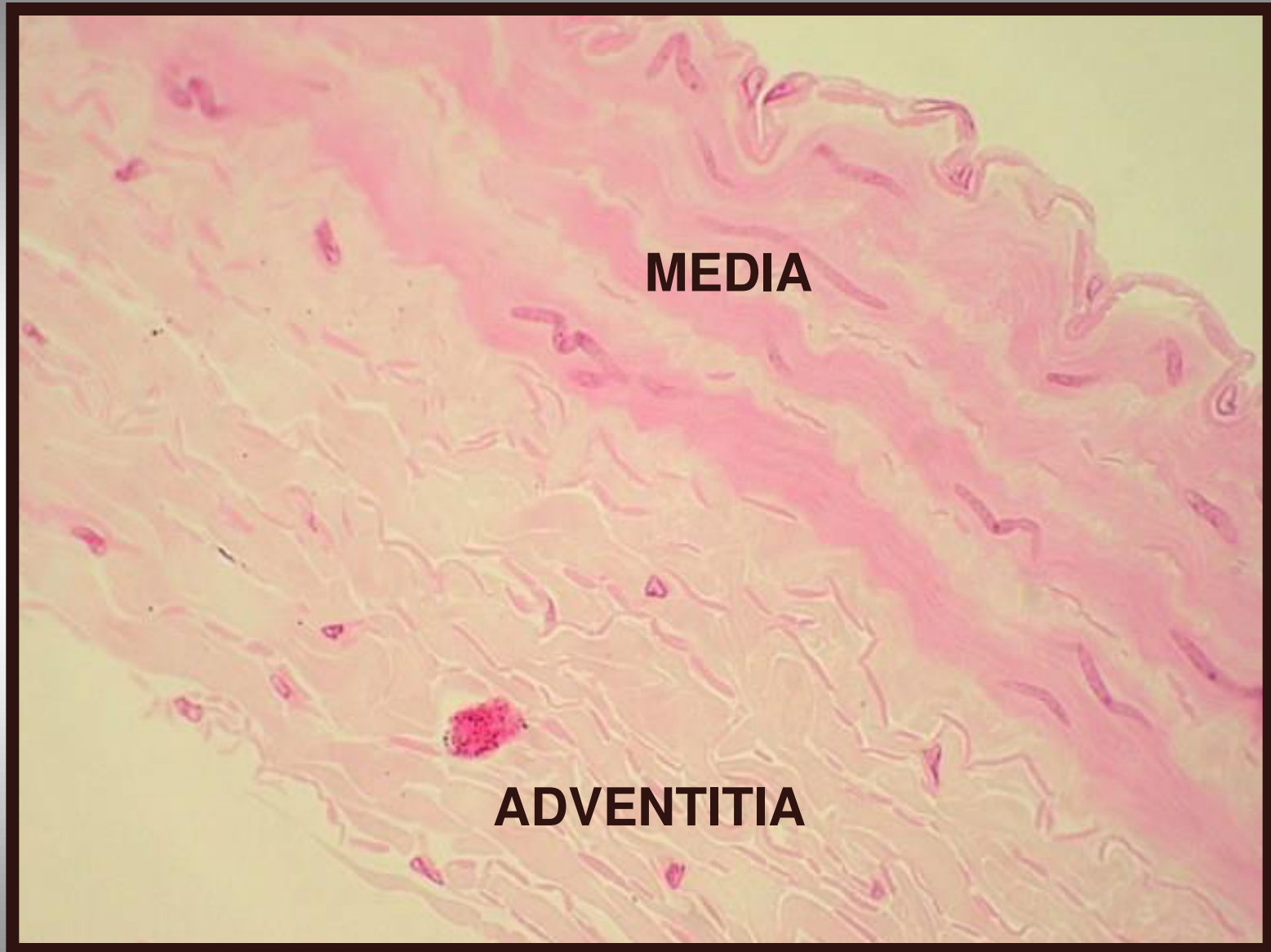
Muscular artery



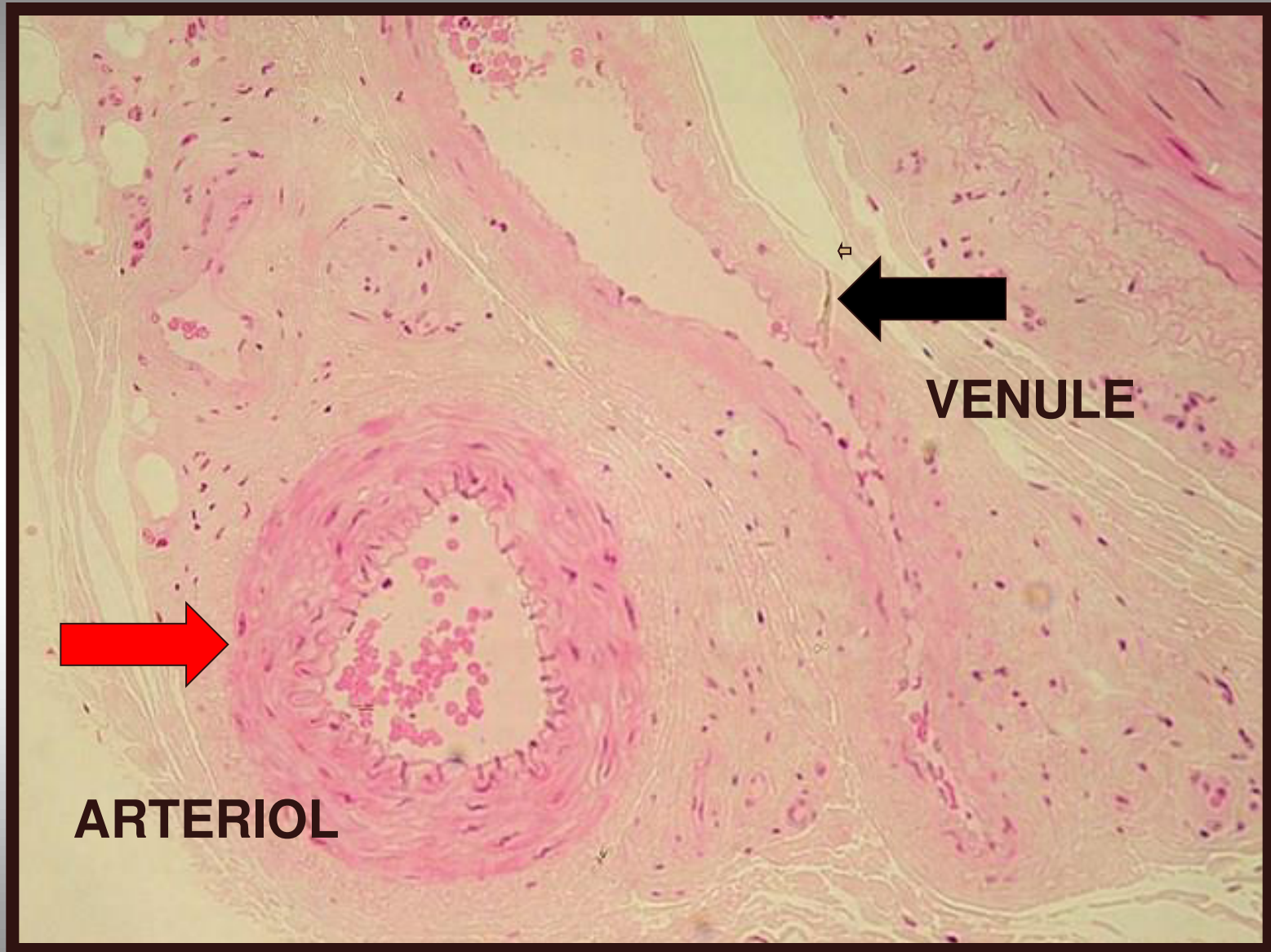
Medium sized



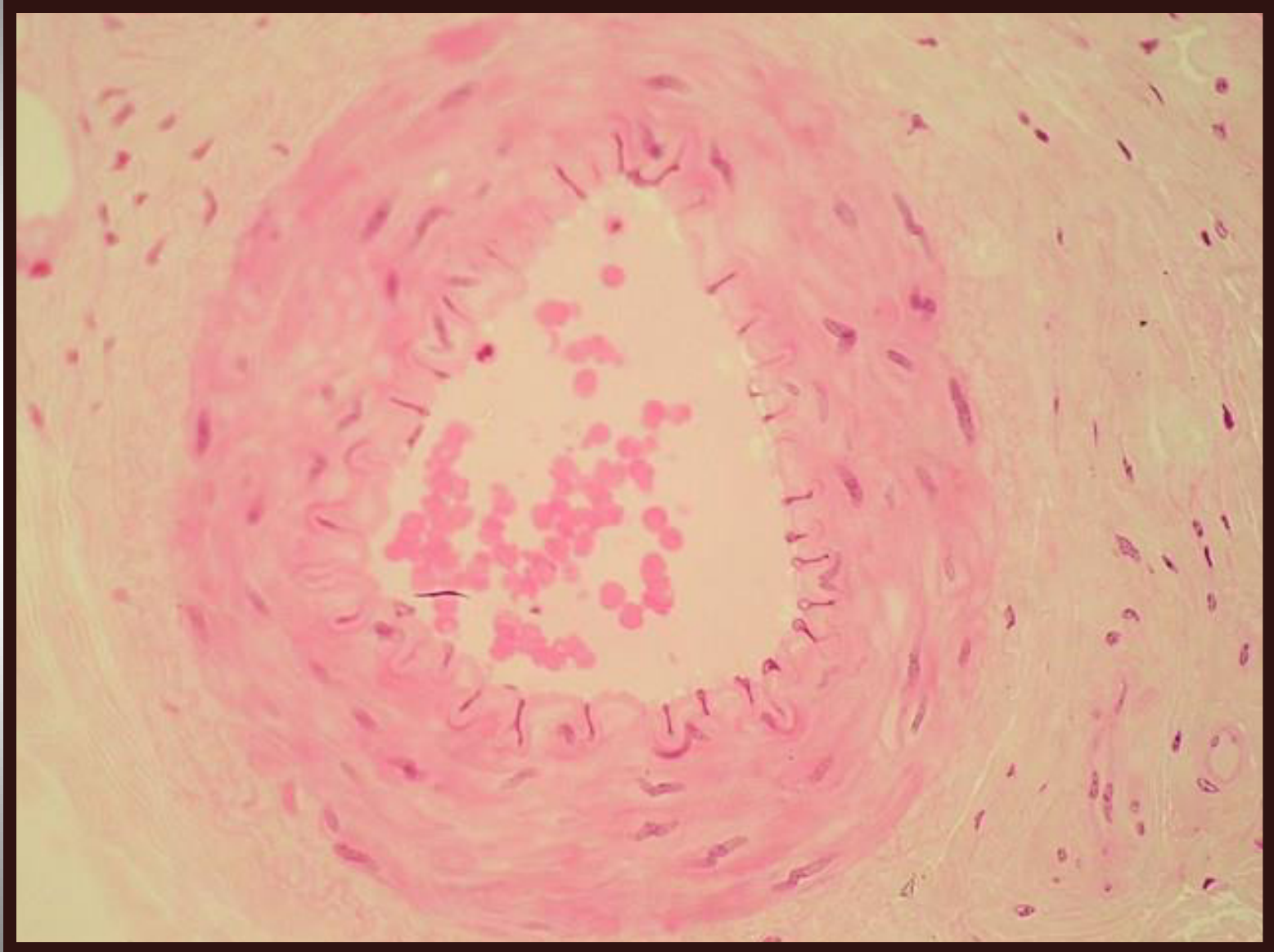
Medium sized vein



Large sized (arteriole & venule)

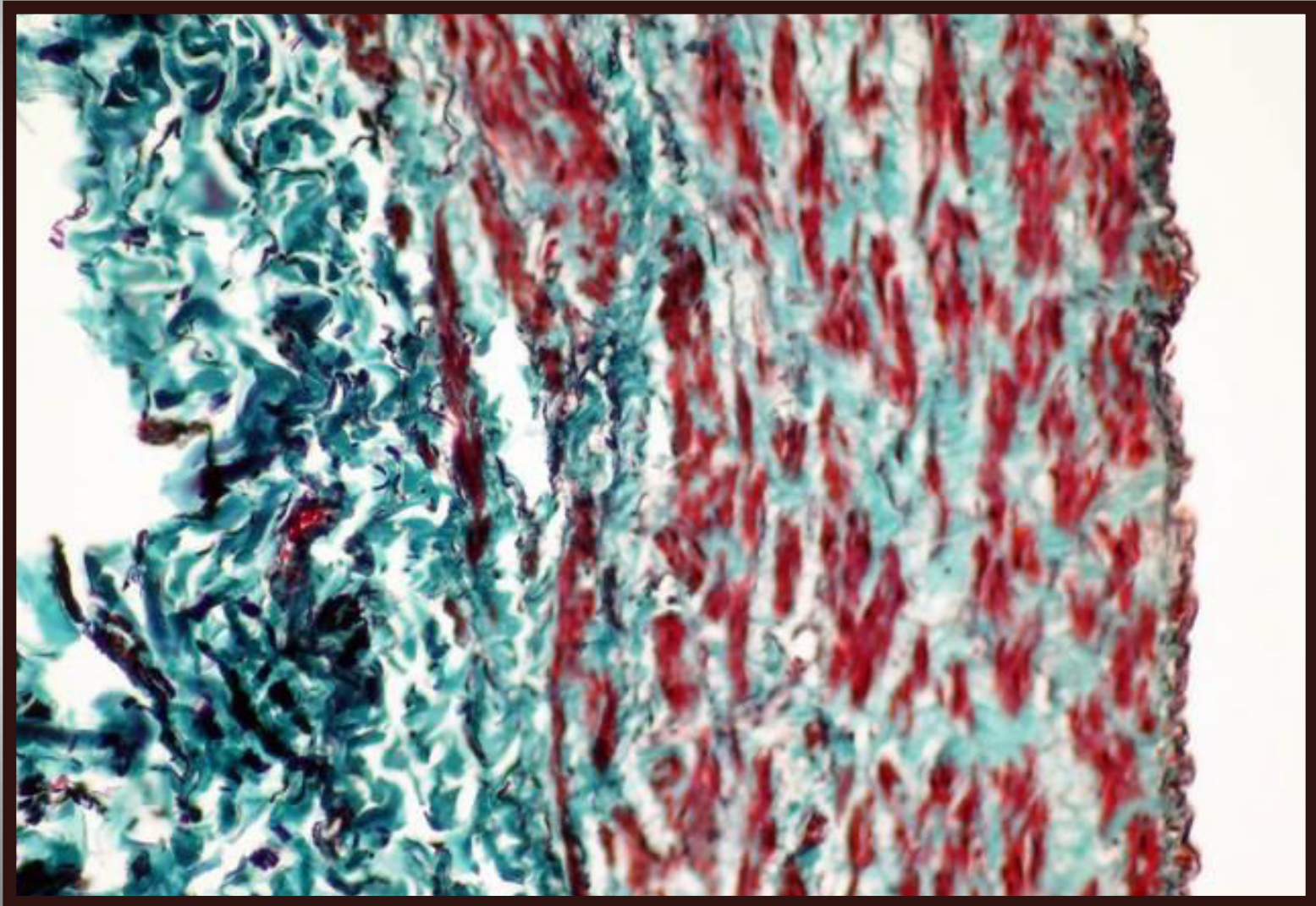


Large Arteriole

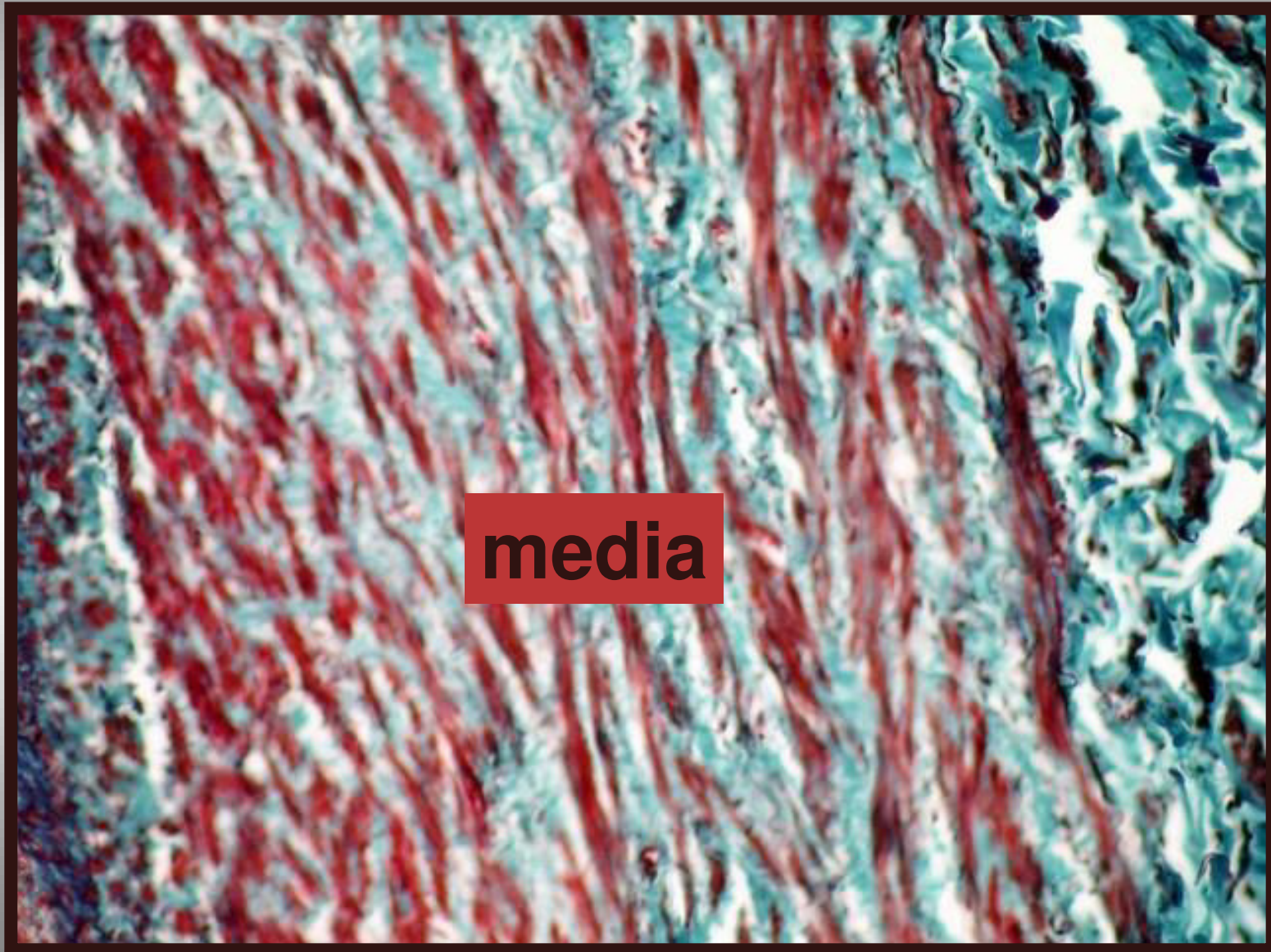


Superficial Vein (Saphenous)

(Masson's trichrome stain)

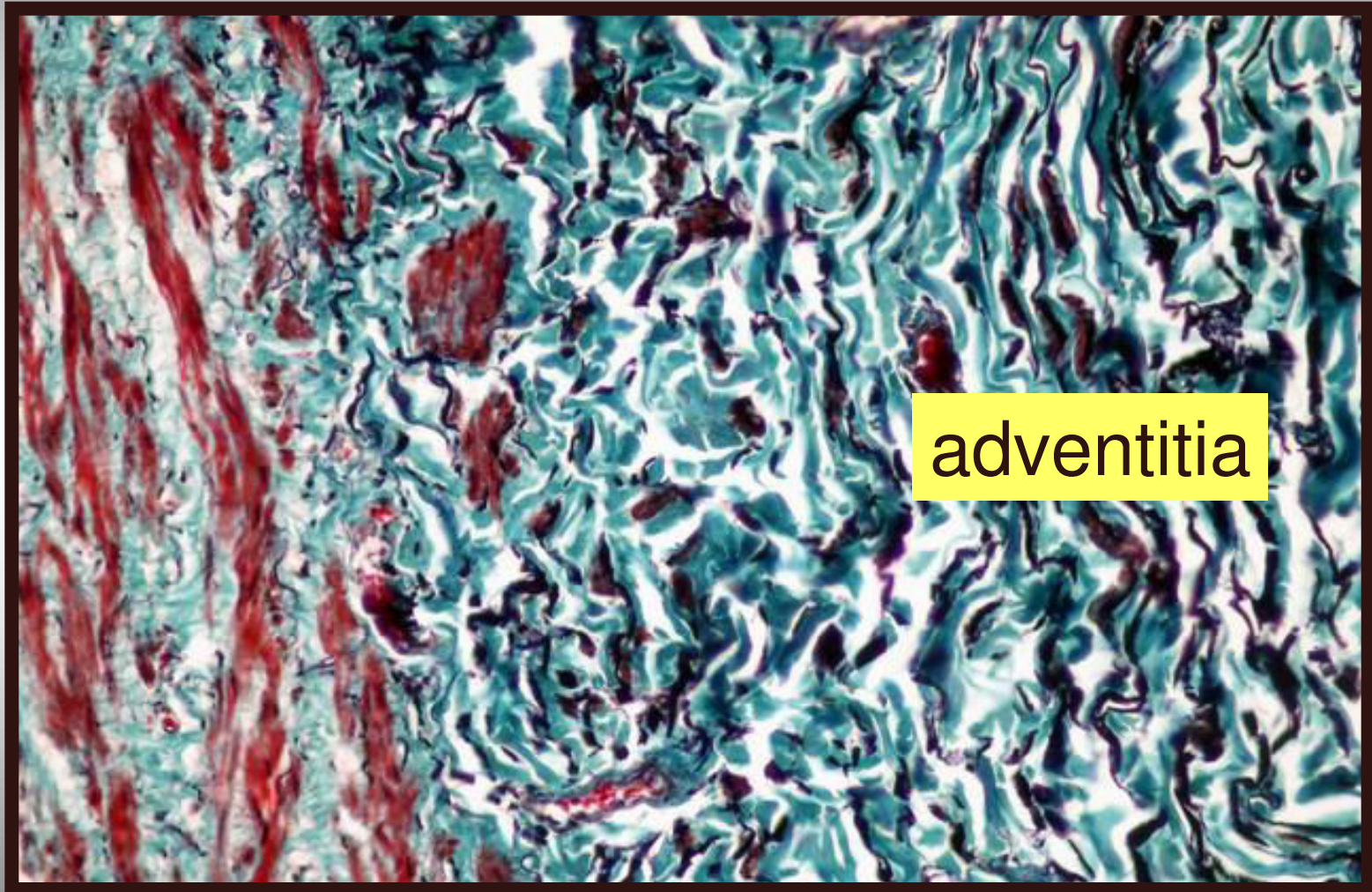


Superficial Vein (Saphenous)

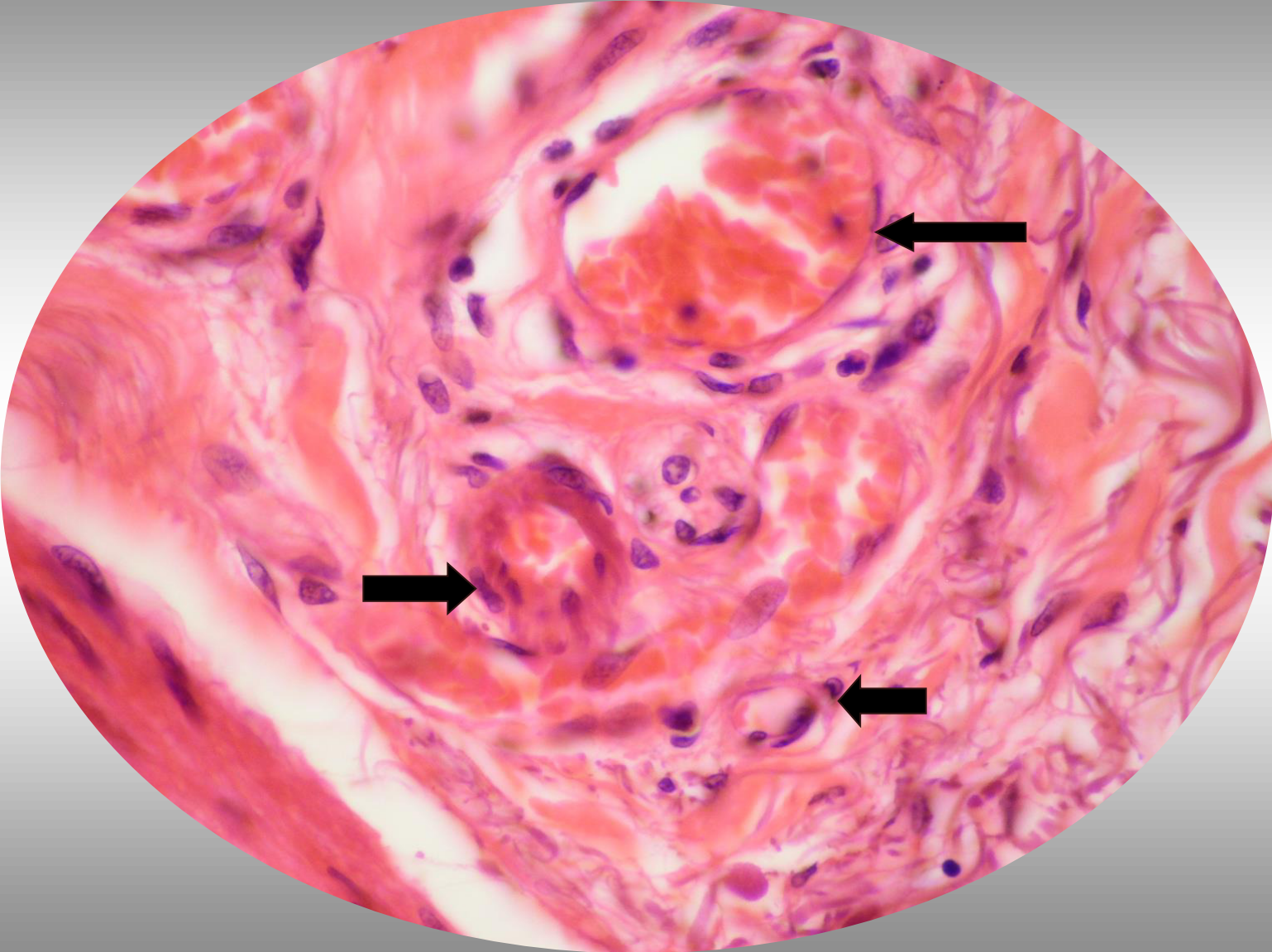


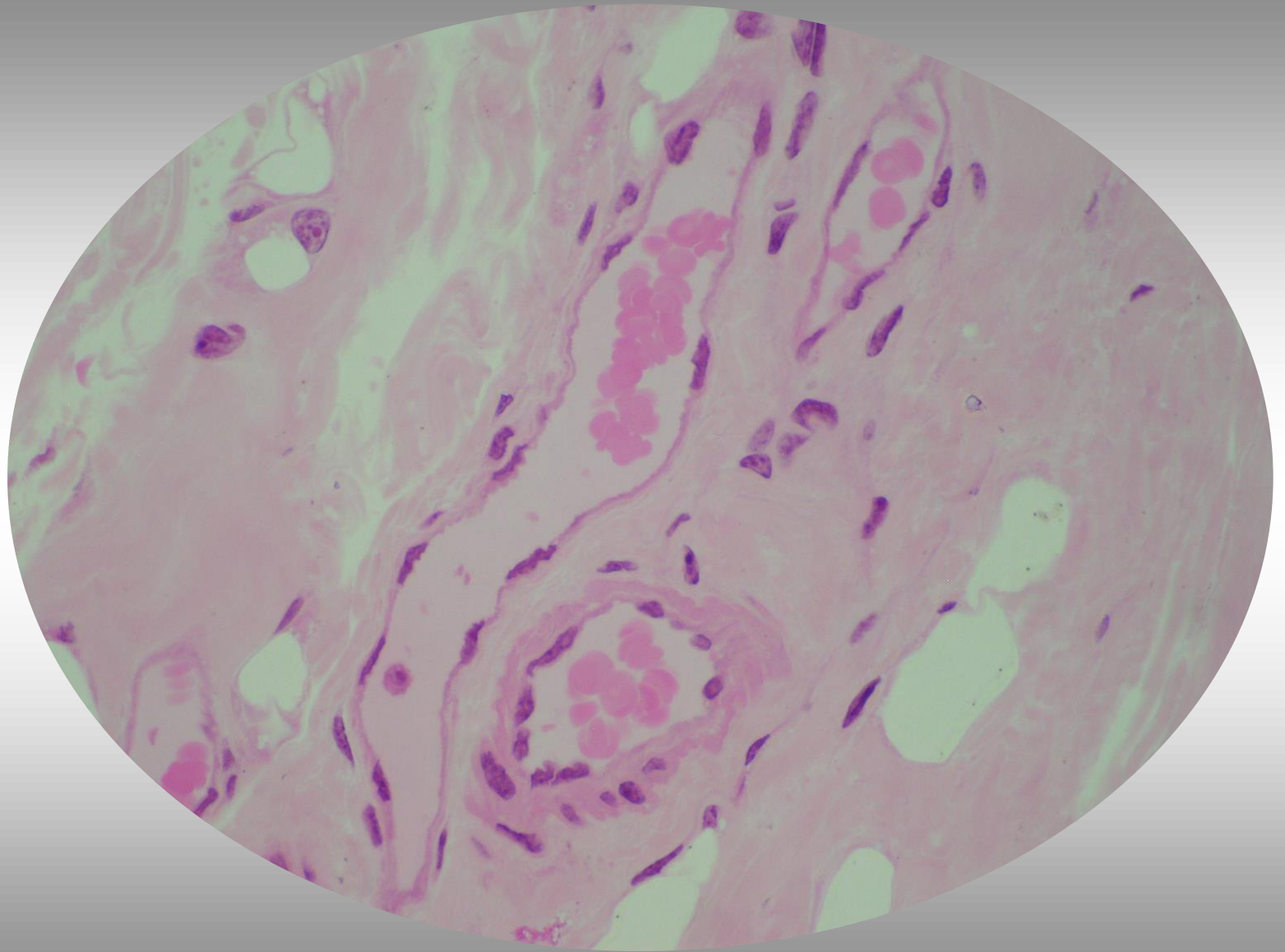
media

Superficial Vein (Saphenous)

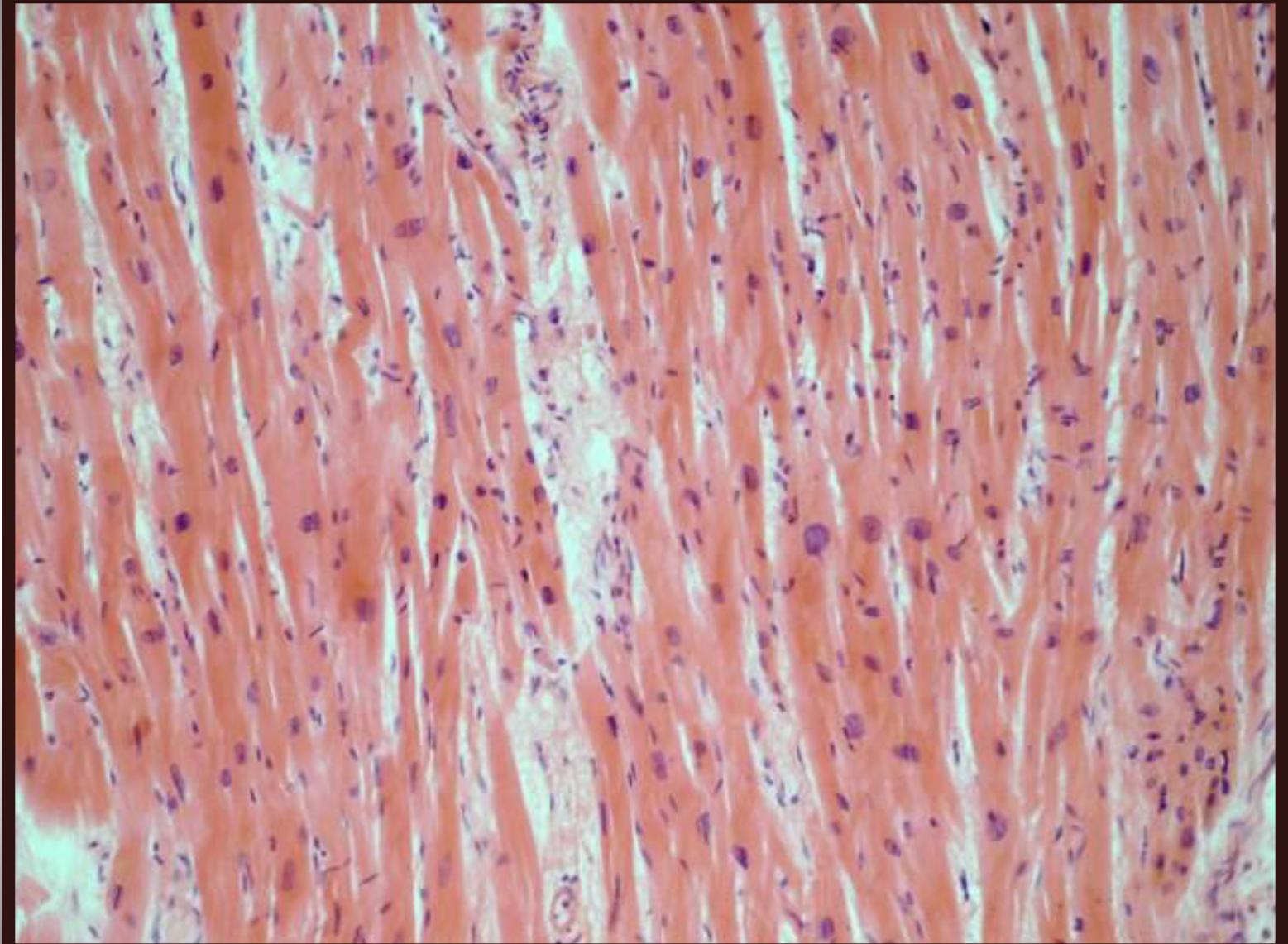


Microvasculature Vessels

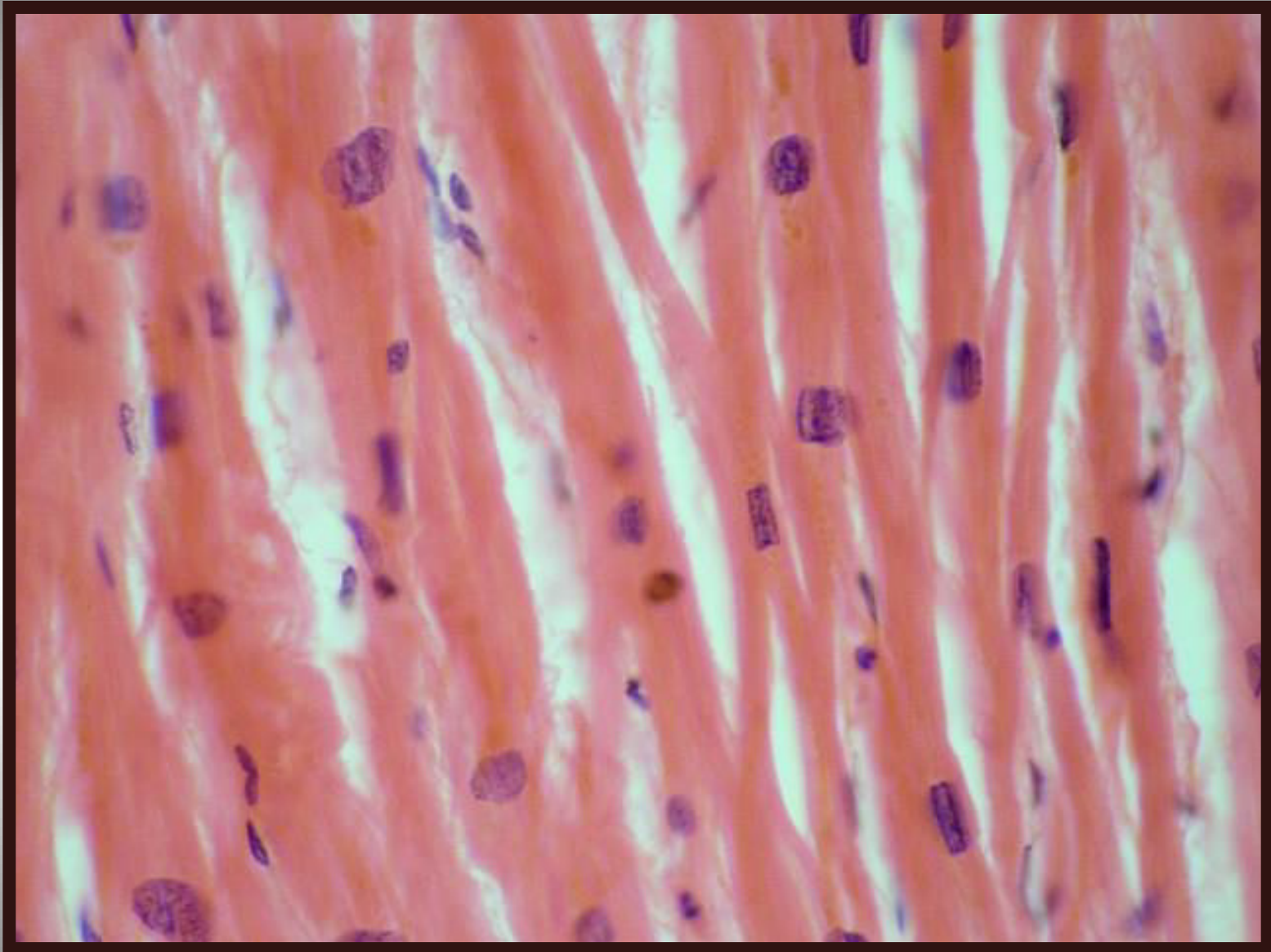


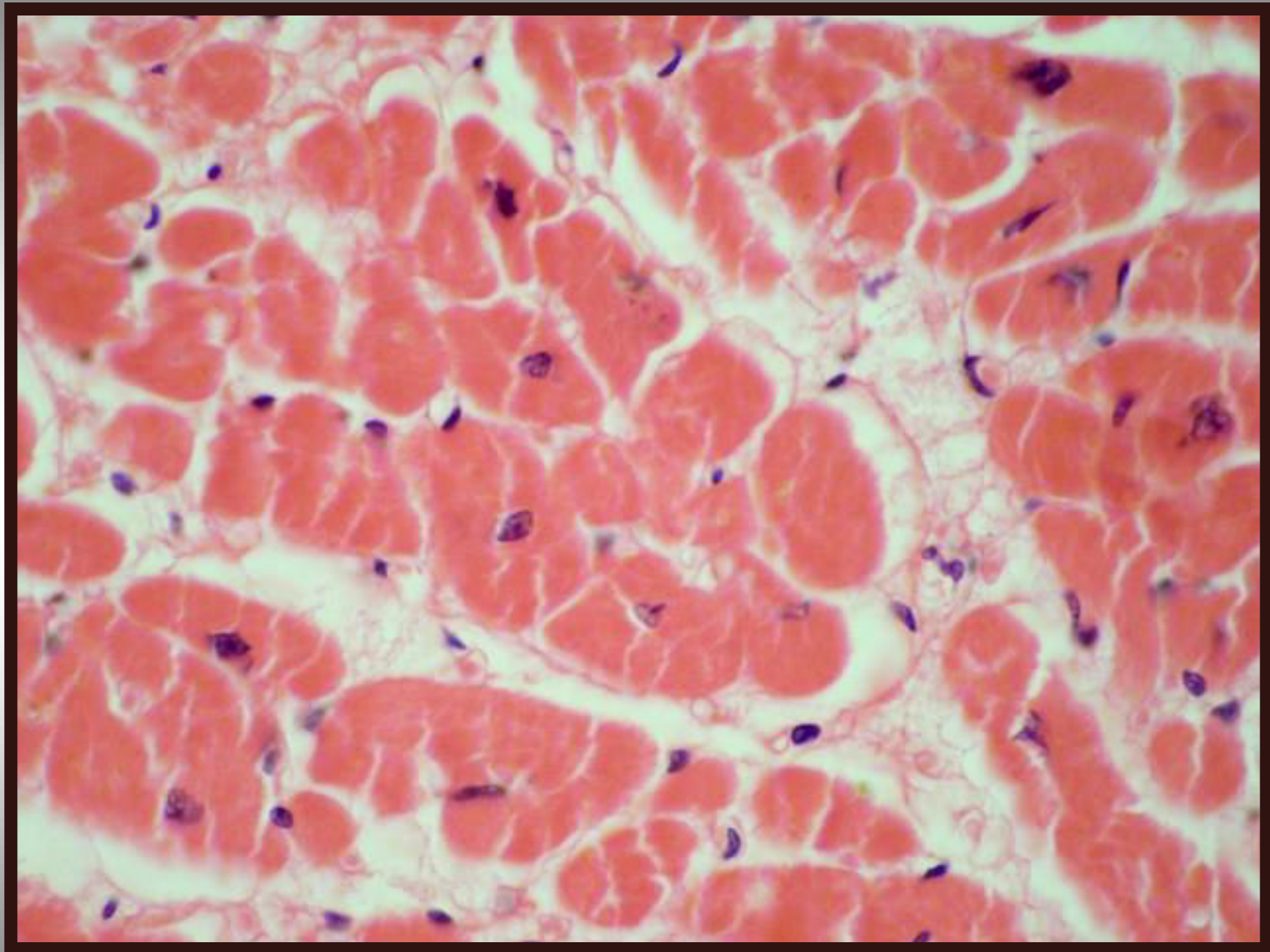


HEART



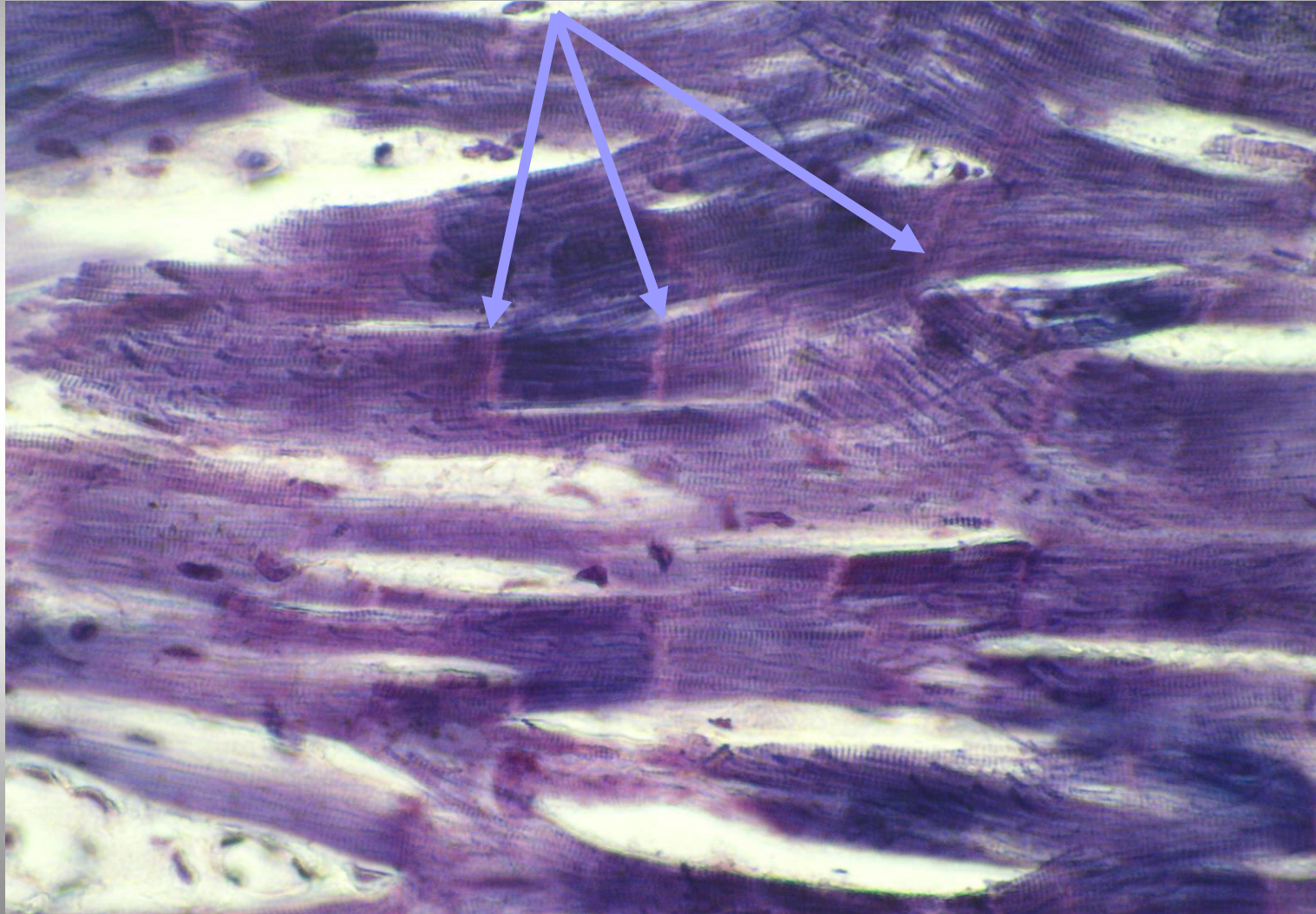




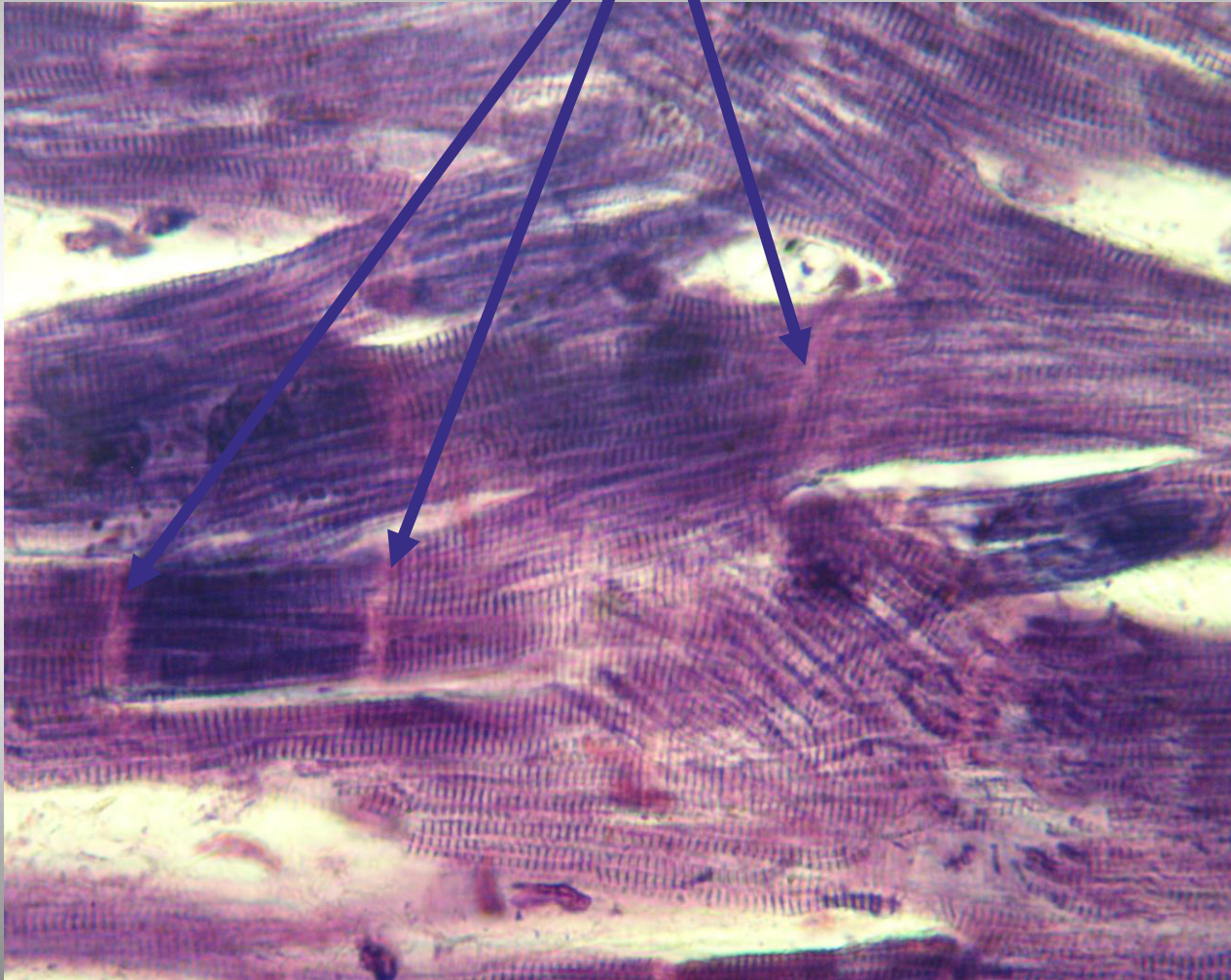


Intercalated disk

(special stain)

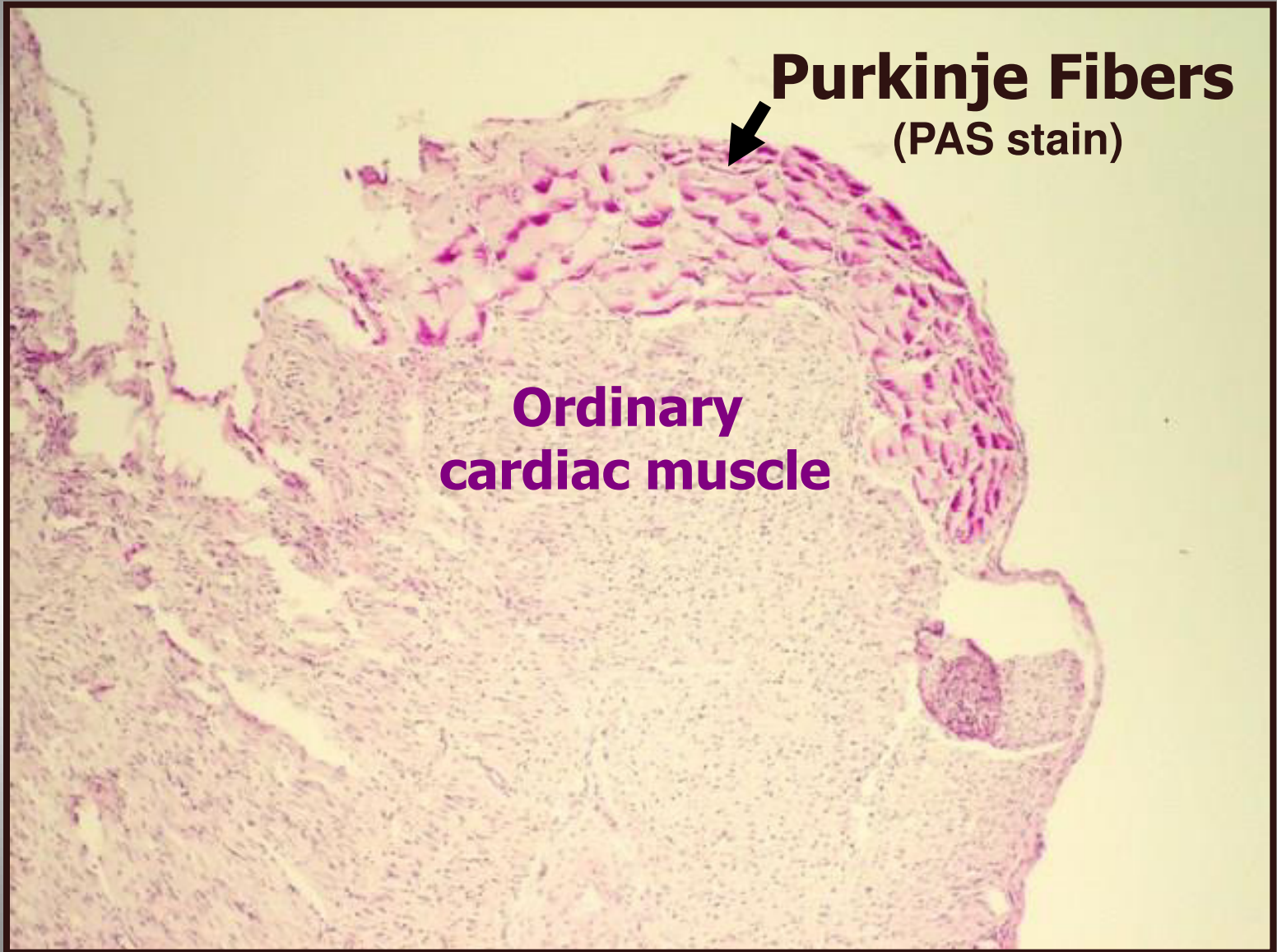


Intercalated disk



Intercalated disc

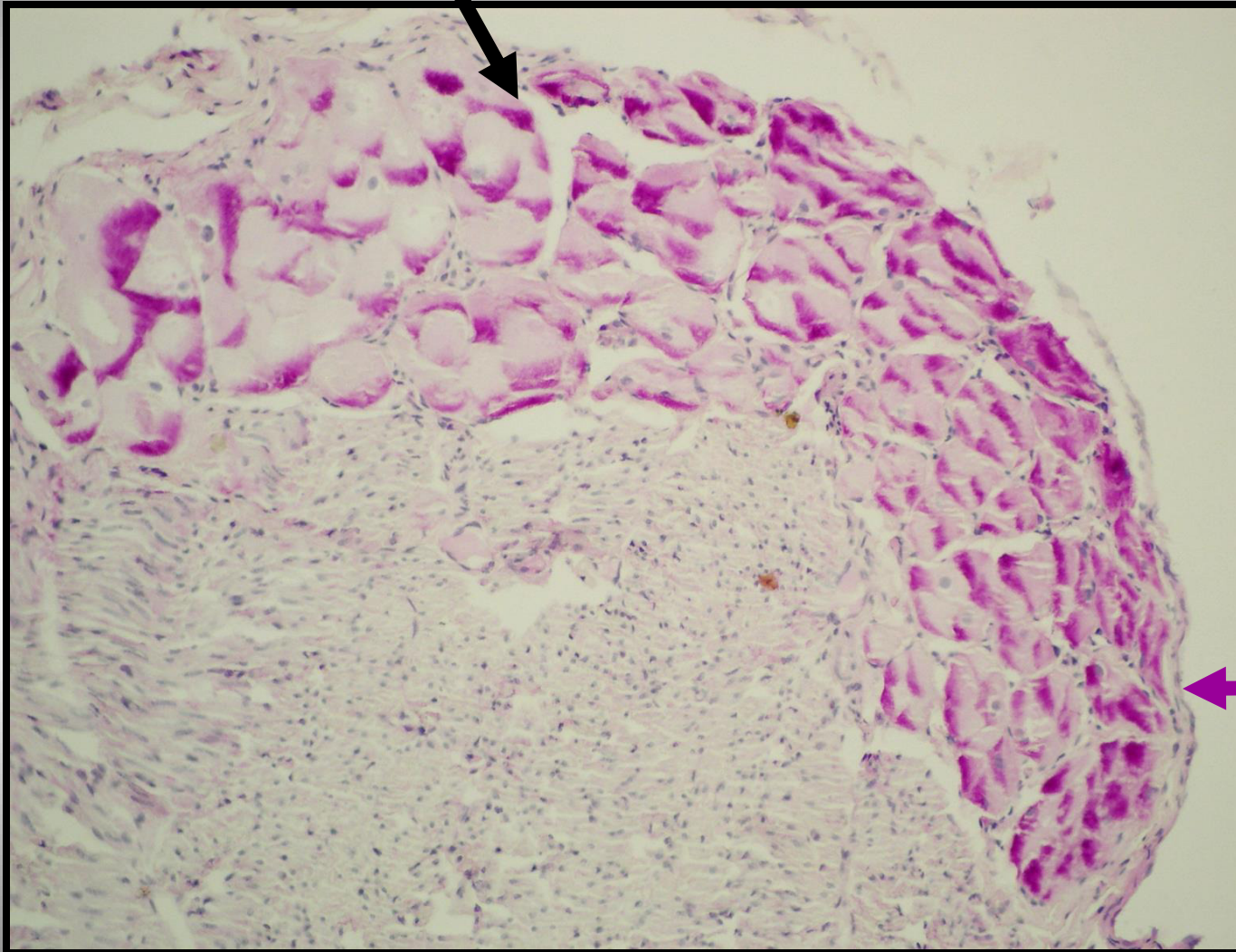




Purkinje Fibers
(PAS stain)

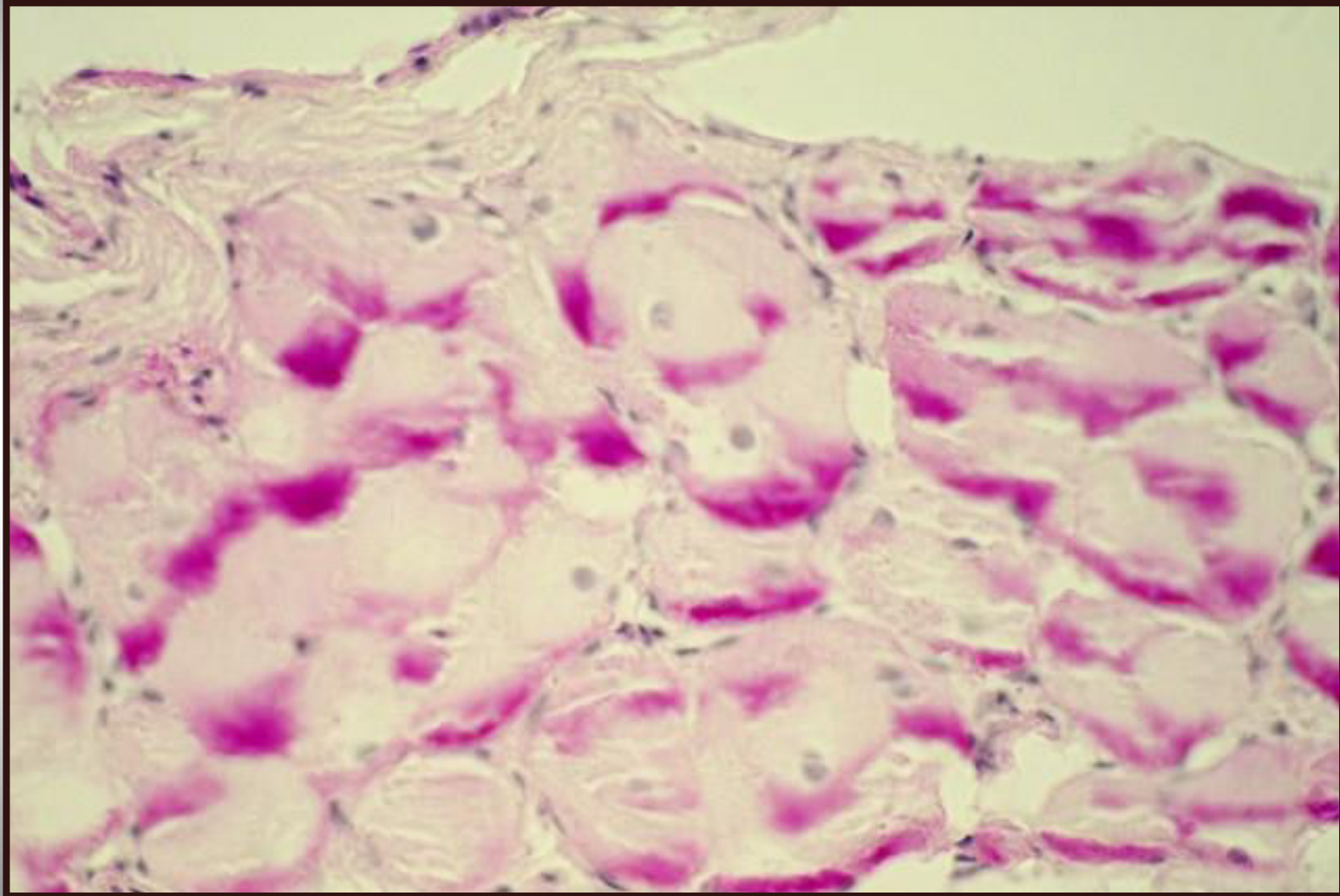
**Ordinary
cardiac muscle**

Purkinje Fibers



← Endocardium

Purkinje Fibers (PAS stain)



Purkinje Fibers

(PAS stain)

