



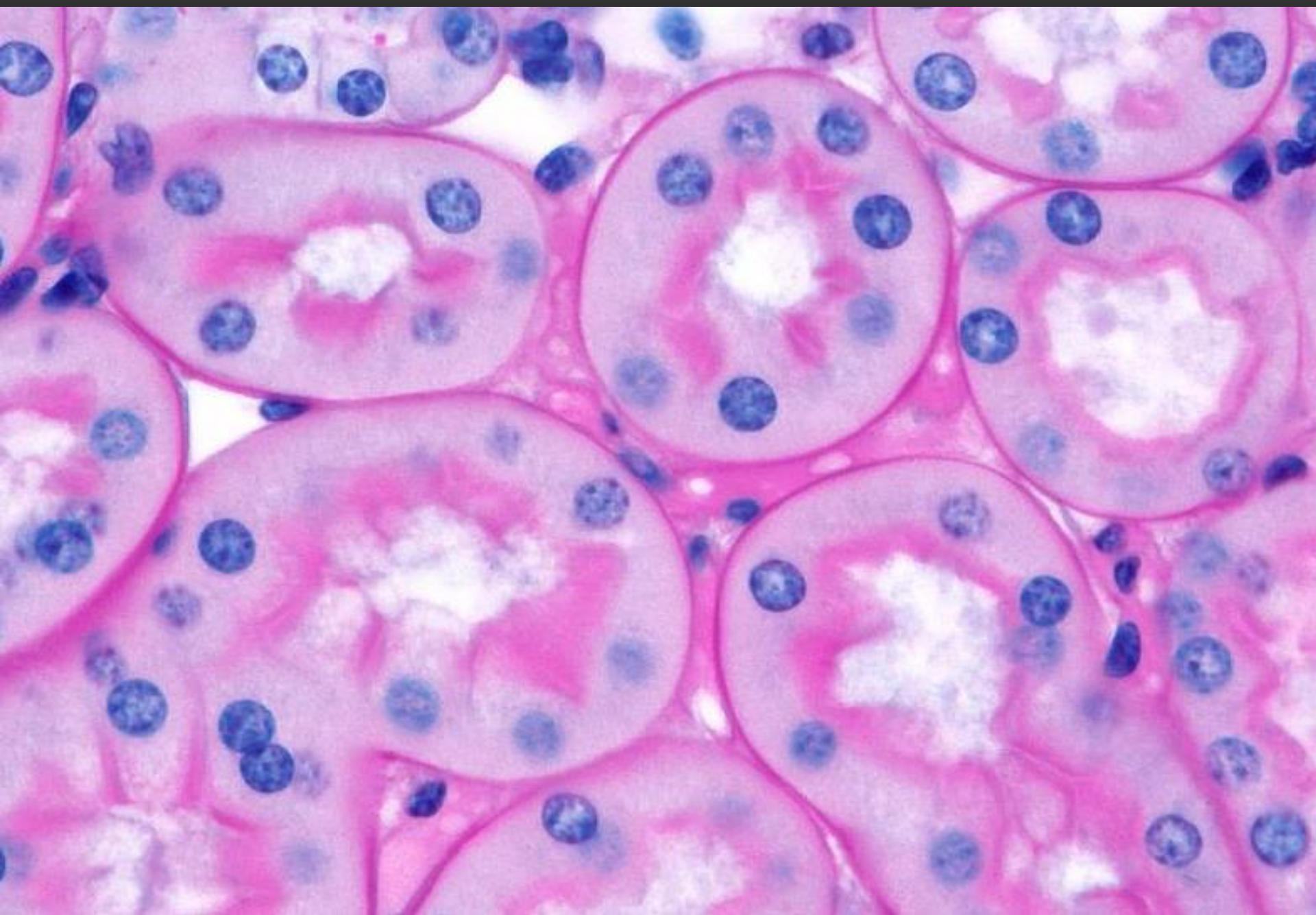
# Histology Lab 1

Notice the following in each slide:

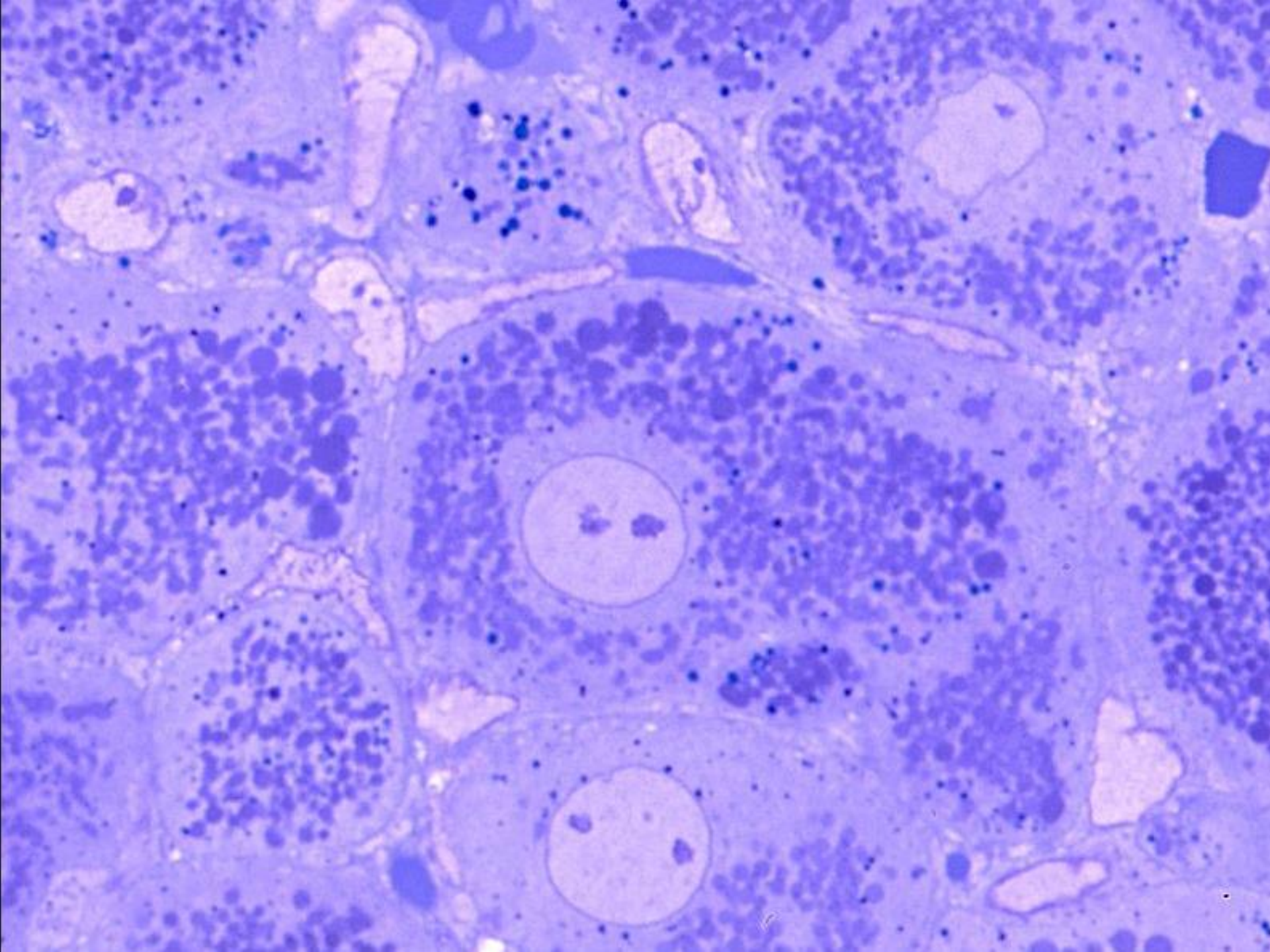
- Shape of the cell(s)
- Cytoplasm
  - Staining reaction
  - Granules
- Nucleus
  - Staining reaction
  - Nucleolus
  - Position
  - Chromatin

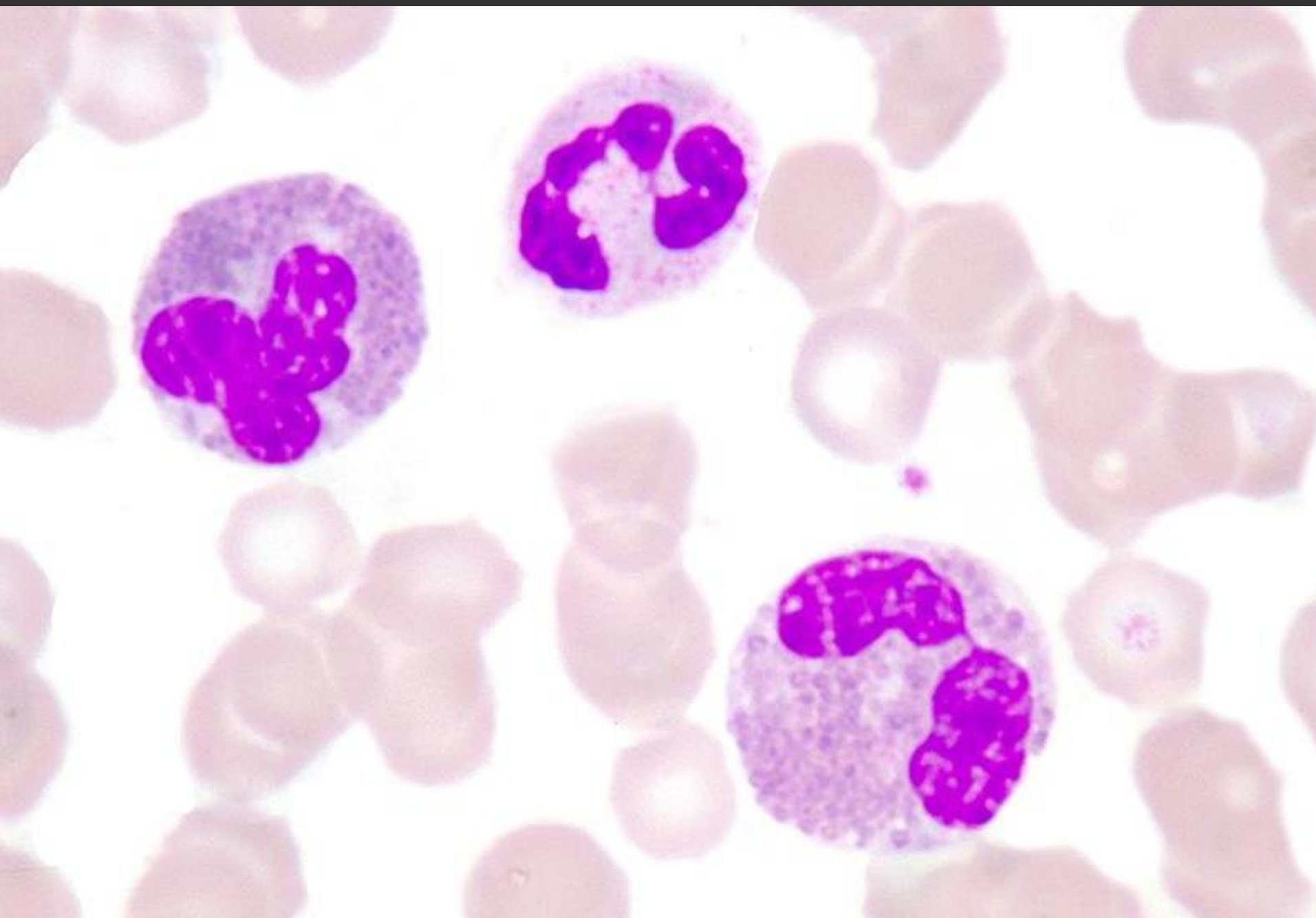
Try to describe what you see in your own words.

Draw a diagram for each slide.

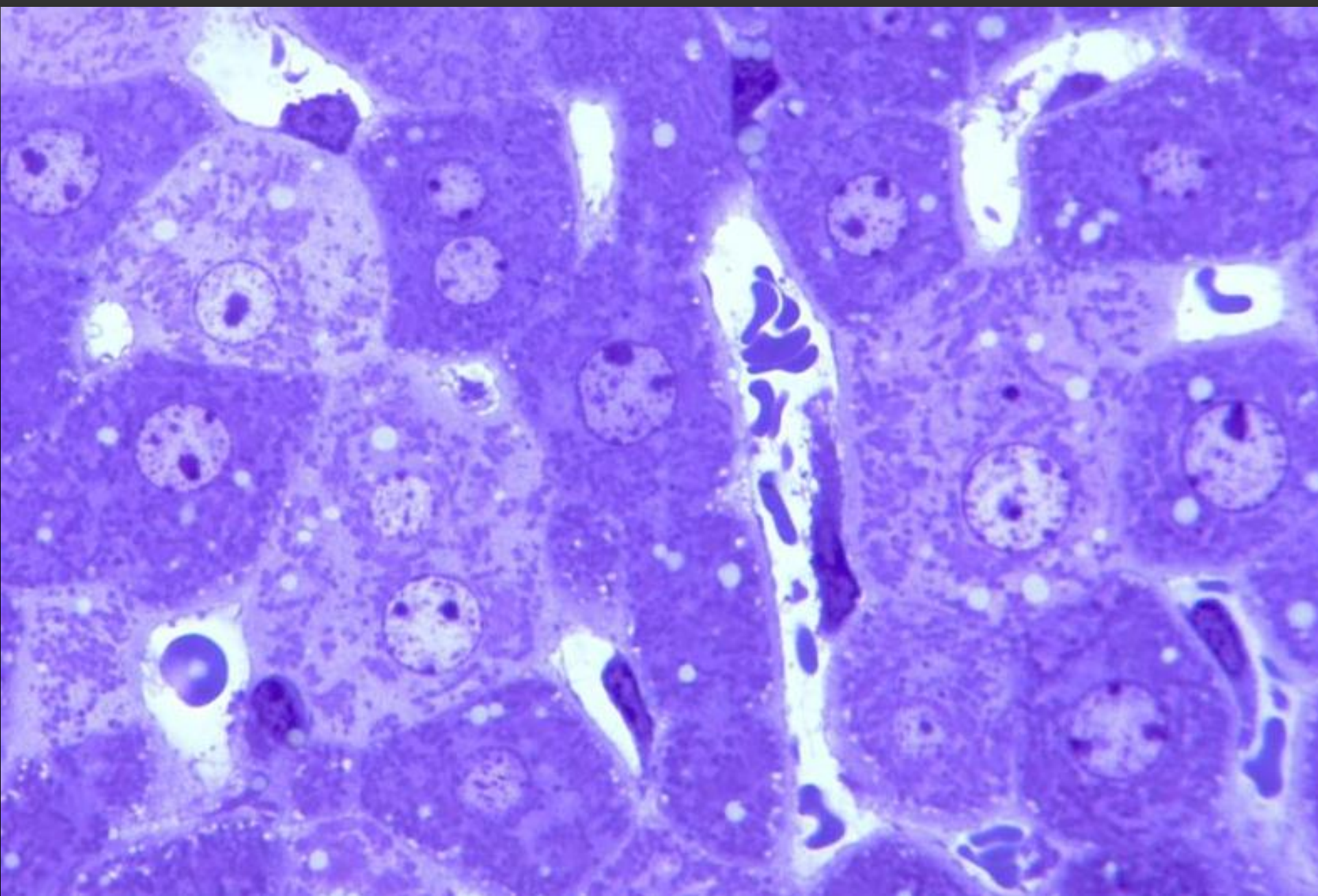


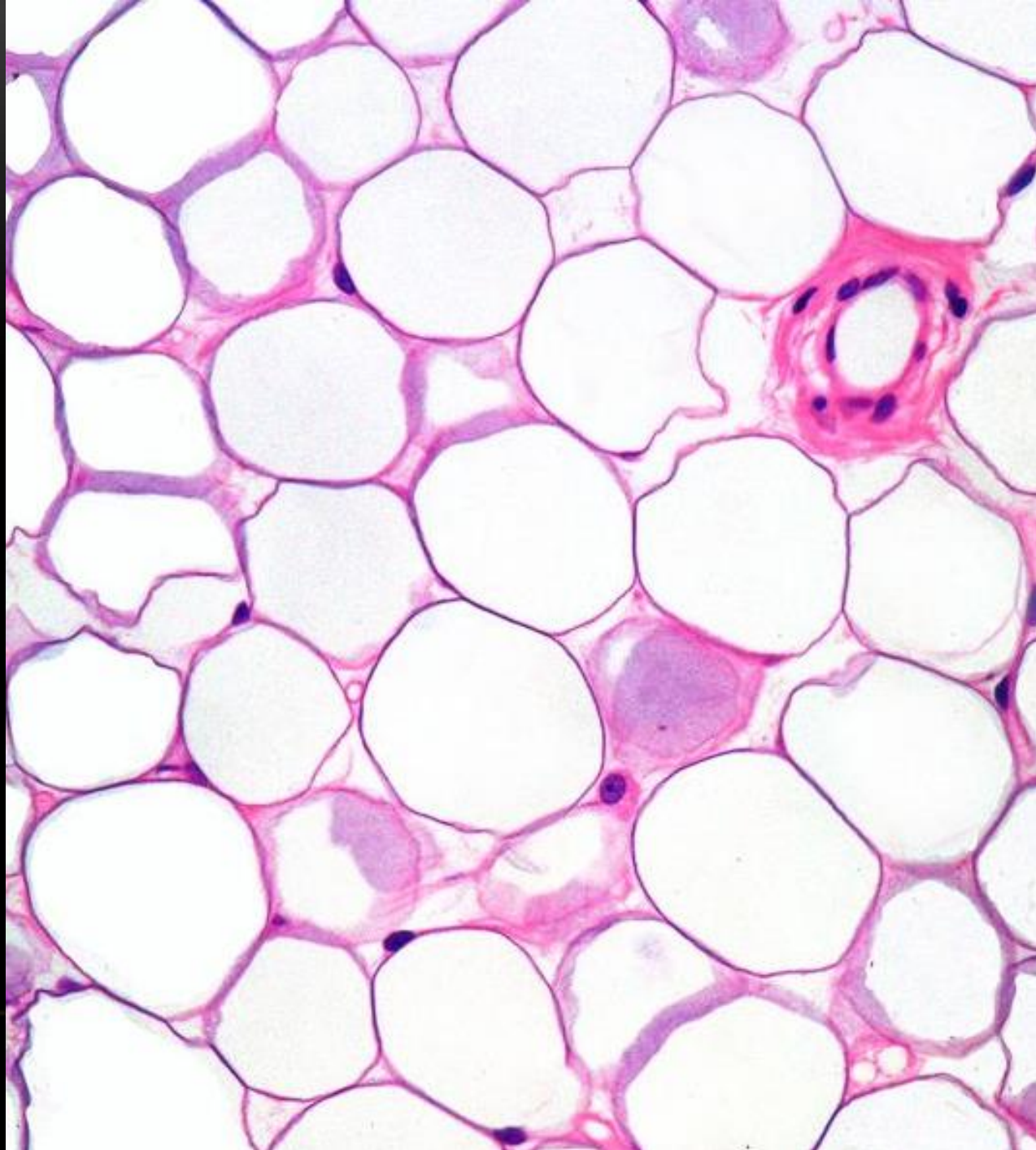




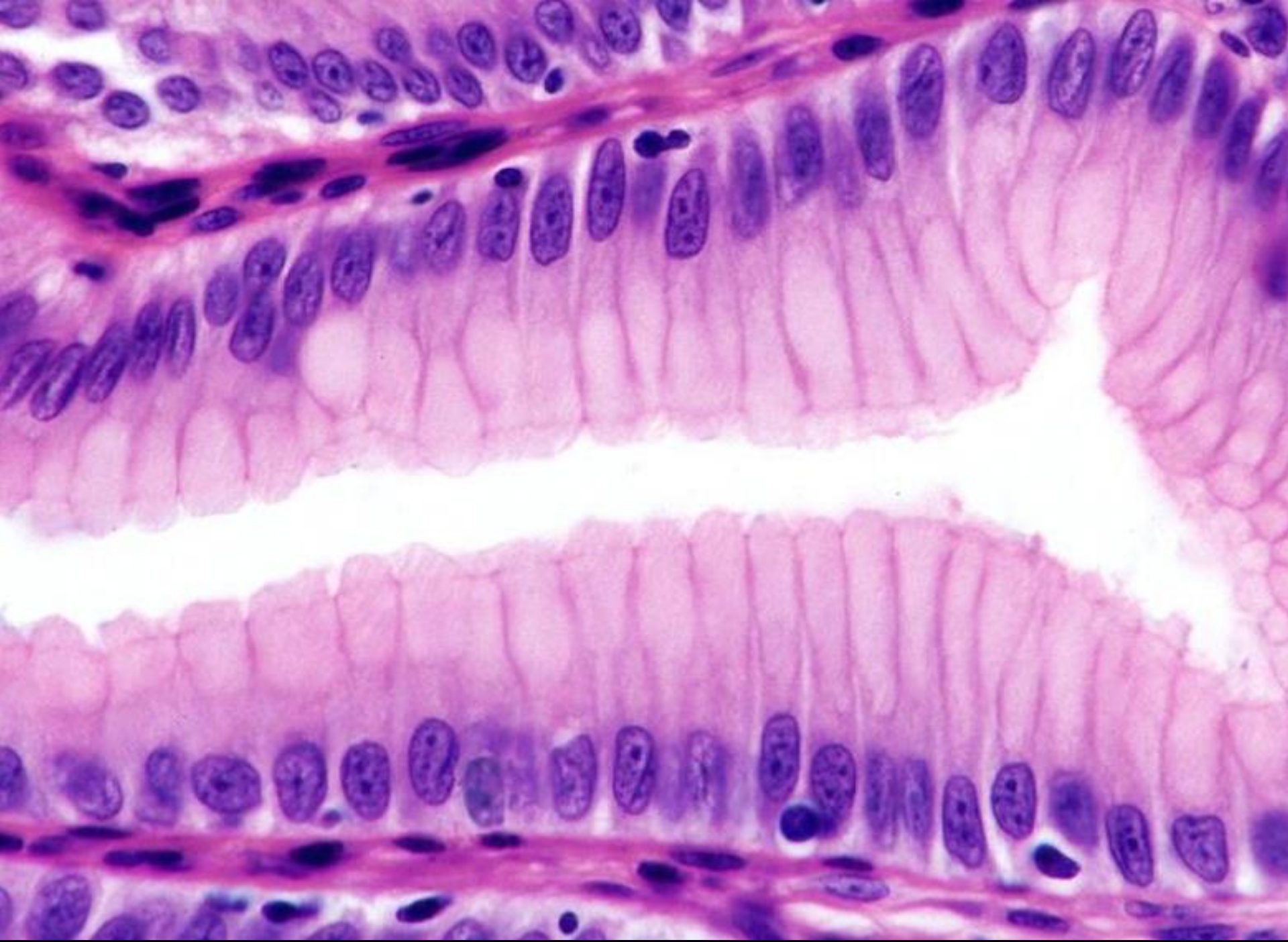




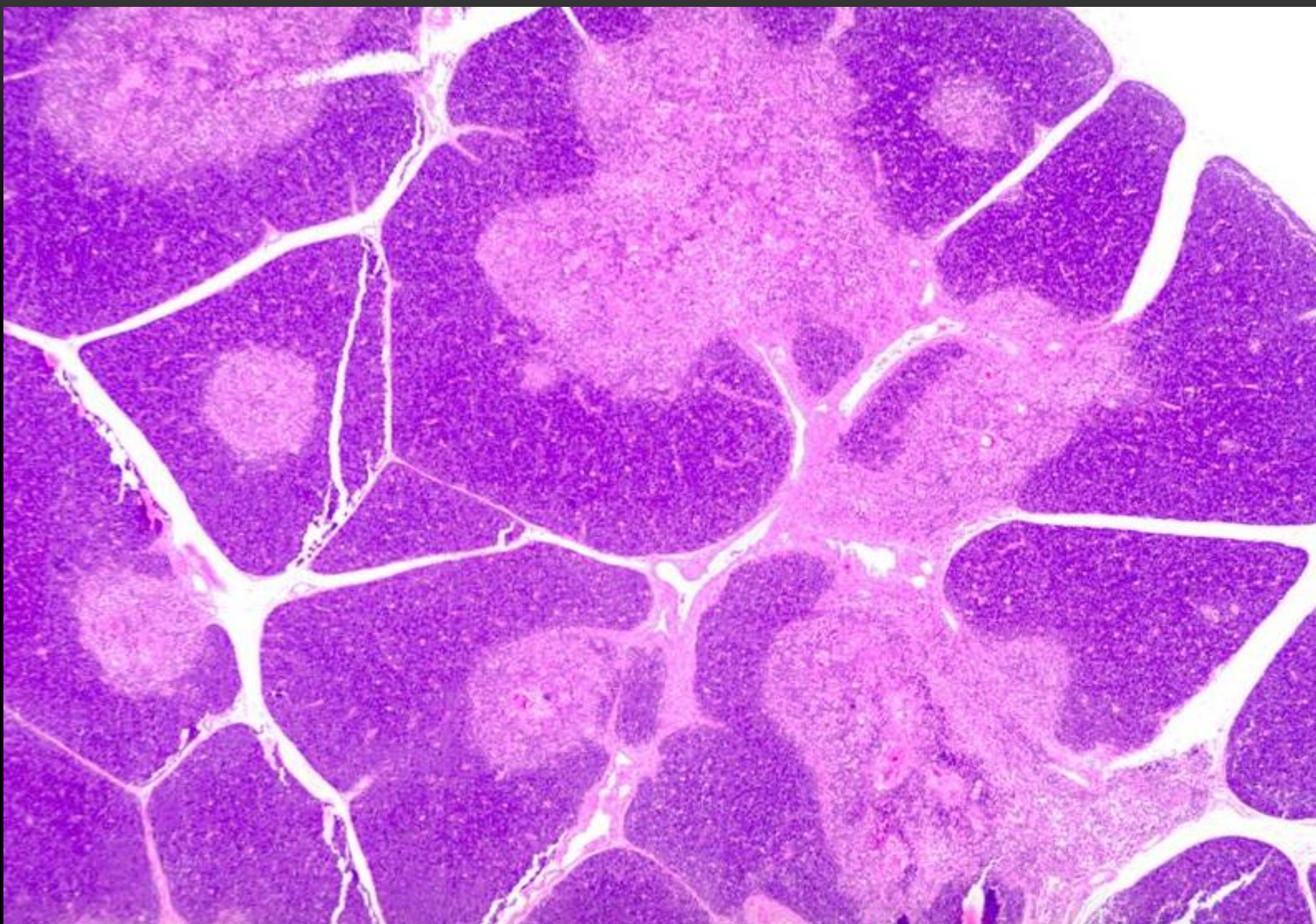




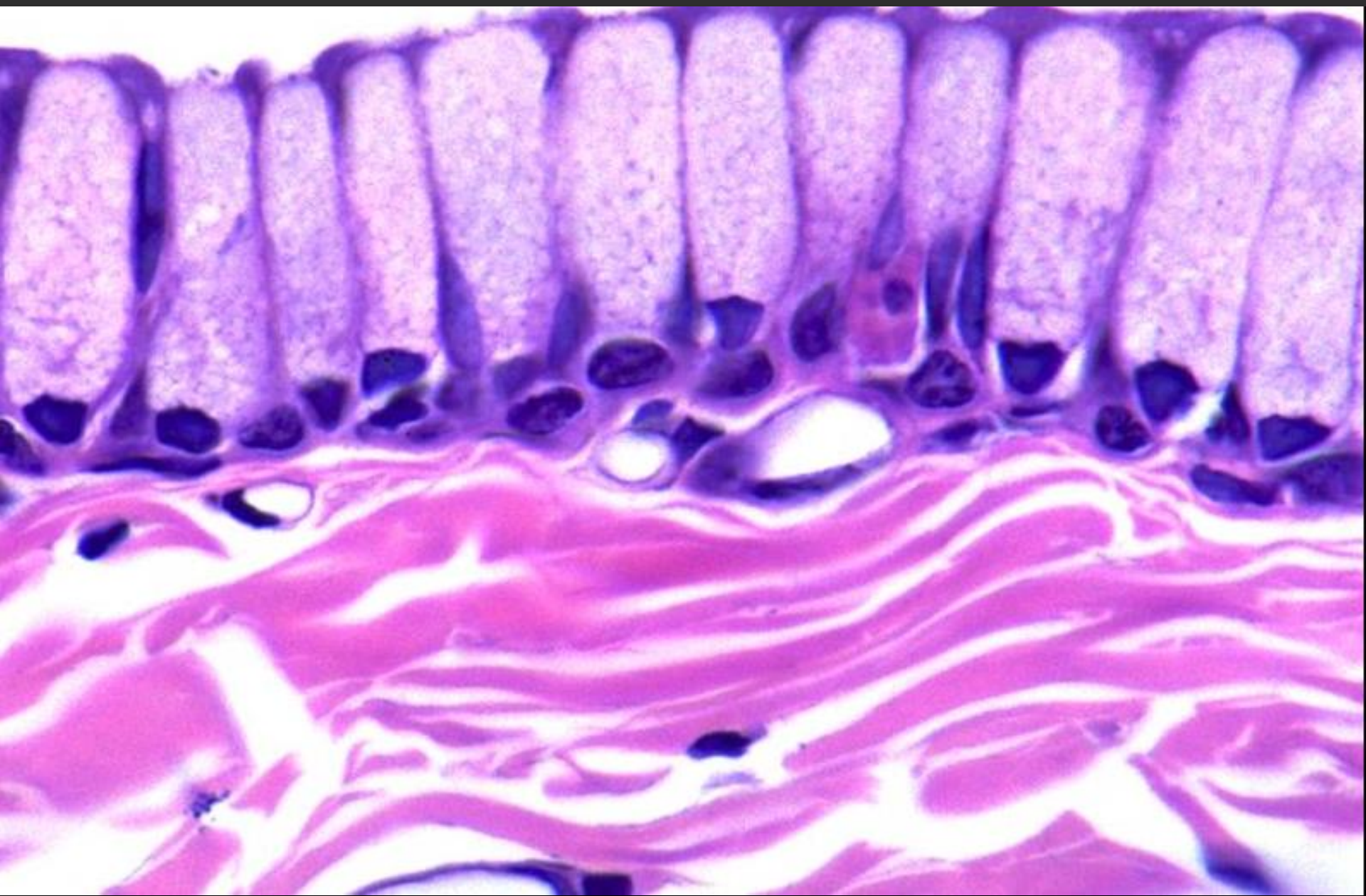




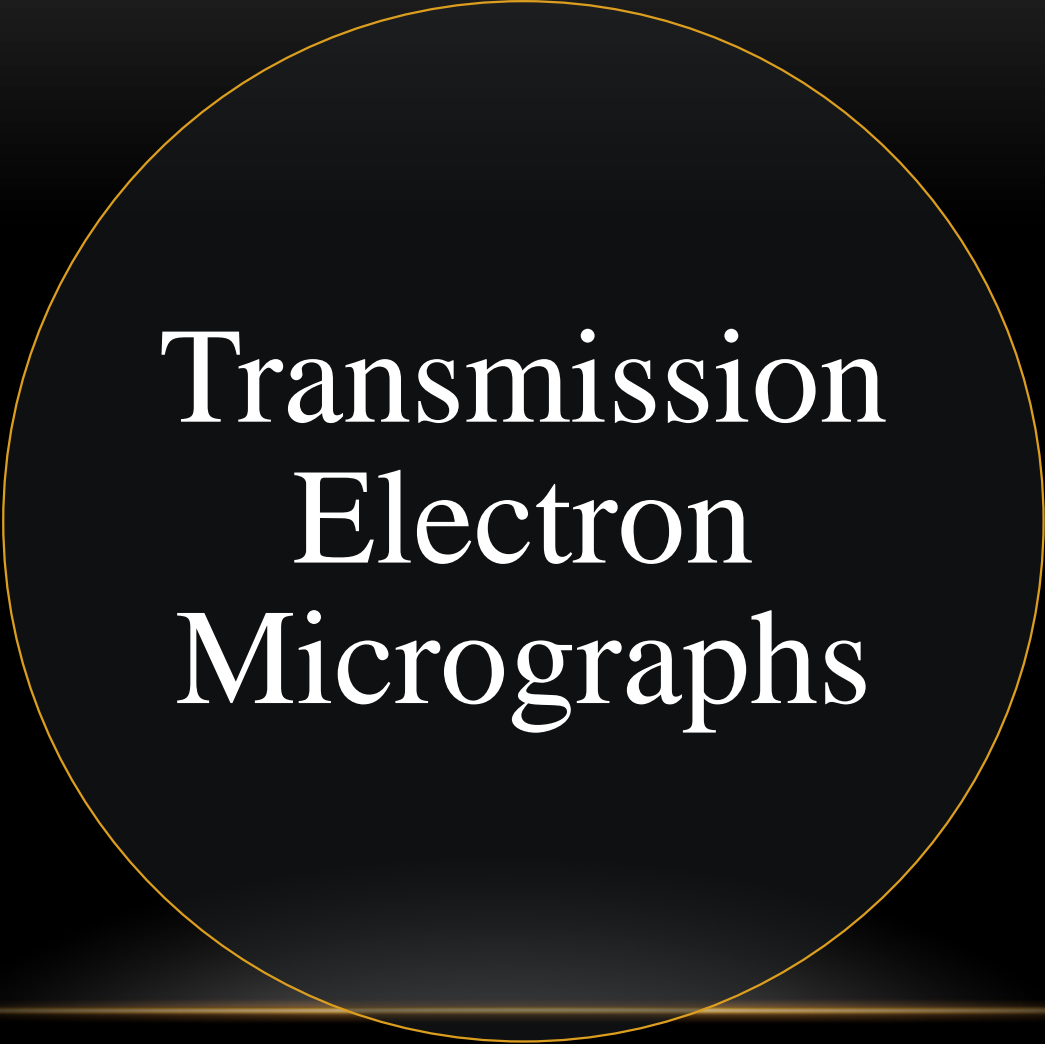












# Transmission Electron Micrographs

What is meant by:

- Electron lucent
- Electron dense

Describe the structures in the following slides.



