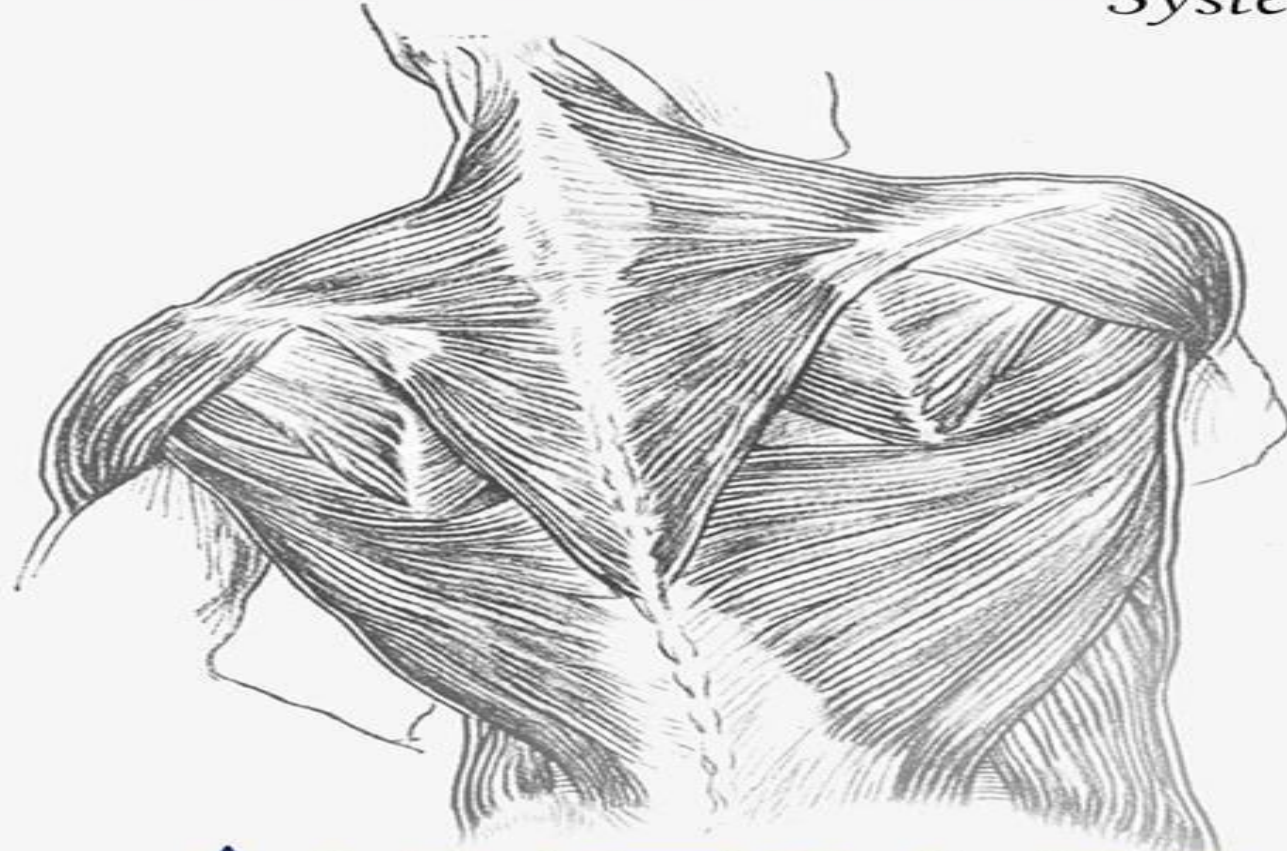


The Skin and
MUSCULOSKELETAL
System



ANATOMY

SLIDES
SHEET

DOCTOR: Dr. Amjad
DONE BY:

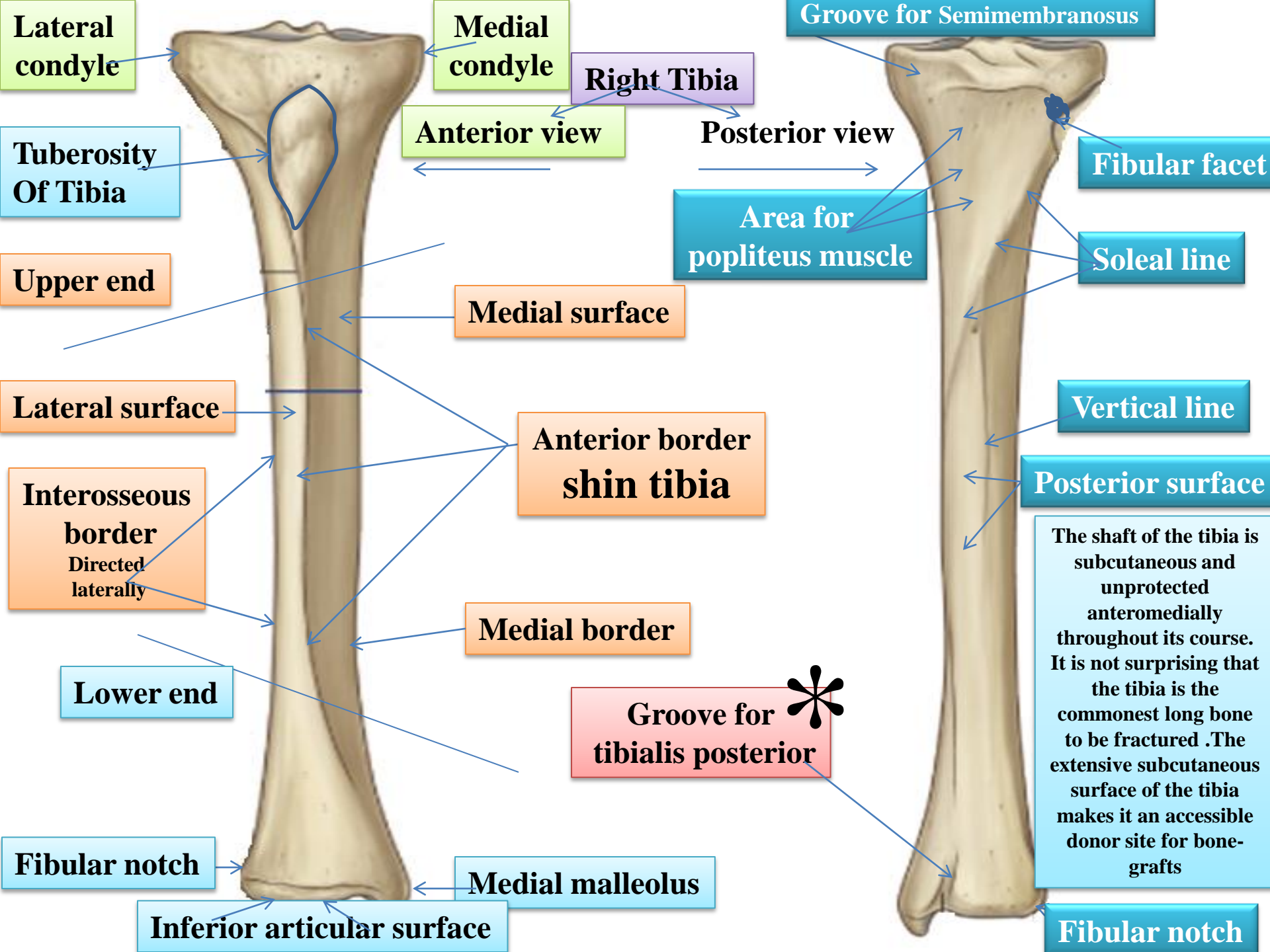
Number # **LAB 2- bones of the lower limbs and x ray practical 2**

Patella

Triangular sesamoid bone

Contained within patellar ligament





Lateral condyle

Medial condyle

Right Tibia

Groove for Semimembranosus

Tuberosity Of Tibia

Anterior view

Posterior view

Fibular facet

Upper end

Area for popliteus muscle

Soleal line

Medial surface

Vertical line

Lateral surface

Anterior border shin tibia

Posterior surface

Interosseous border Directed laterally

Medial border

The shaft of the tibia is subcutaneous and unprotected anteromedially throughout its course. It is not surprising that the tibia is the commonest long bone to be fractured. The extensive subcutaneous surface of the tibia makes it an accessible donor site for bone-grafts

Lower end

Groove for tibialis posterior *

Fibular notch

Medial malleolus

Inferior articular surface

Fibular notch

Styloid process

Head

Neck

Articular facet of the head

1-Lateral surface

Provides origin to the muscles in the lateral compartment of the leg

2-Anterior surface provides origin to the extensor muscles of the leg
Extensor surface

3-Posterior surface provides origin to some of the flexor muscles of the leg
flexor surface

Anterior border

Medial crest

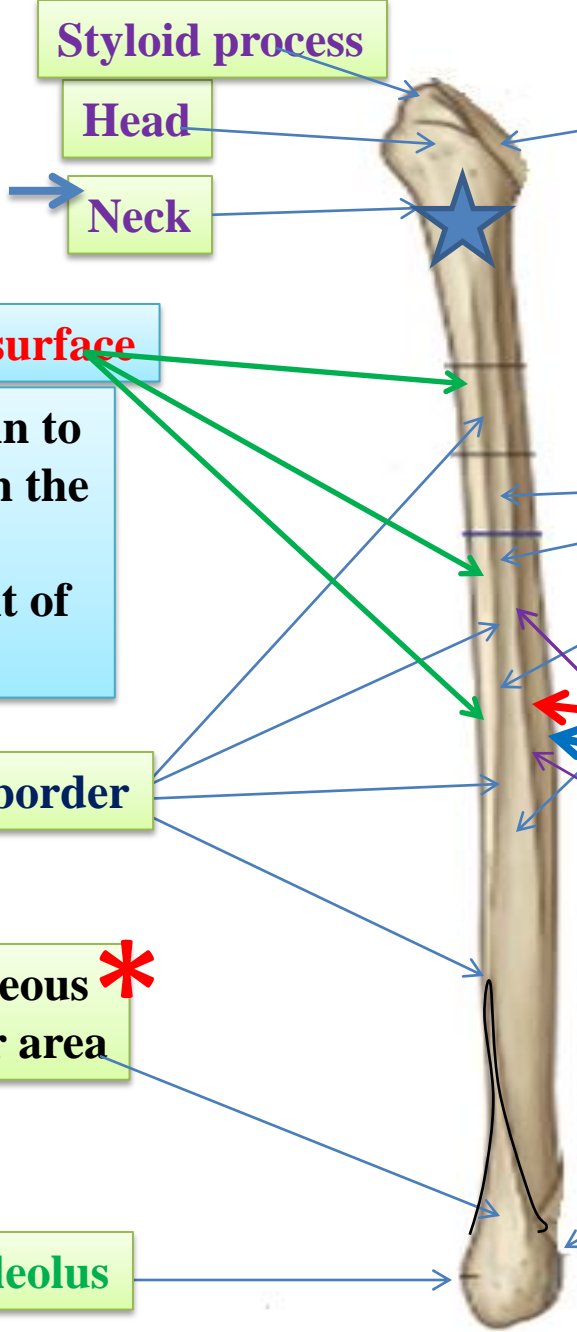
Interosseous border

Subcutaneous *
triangular area

*
Malleolar fossa, located on the medial surface of the lateral malleolus
Inferior
Posterior
medial
in position helps to determine left or right

Lateral malleolus

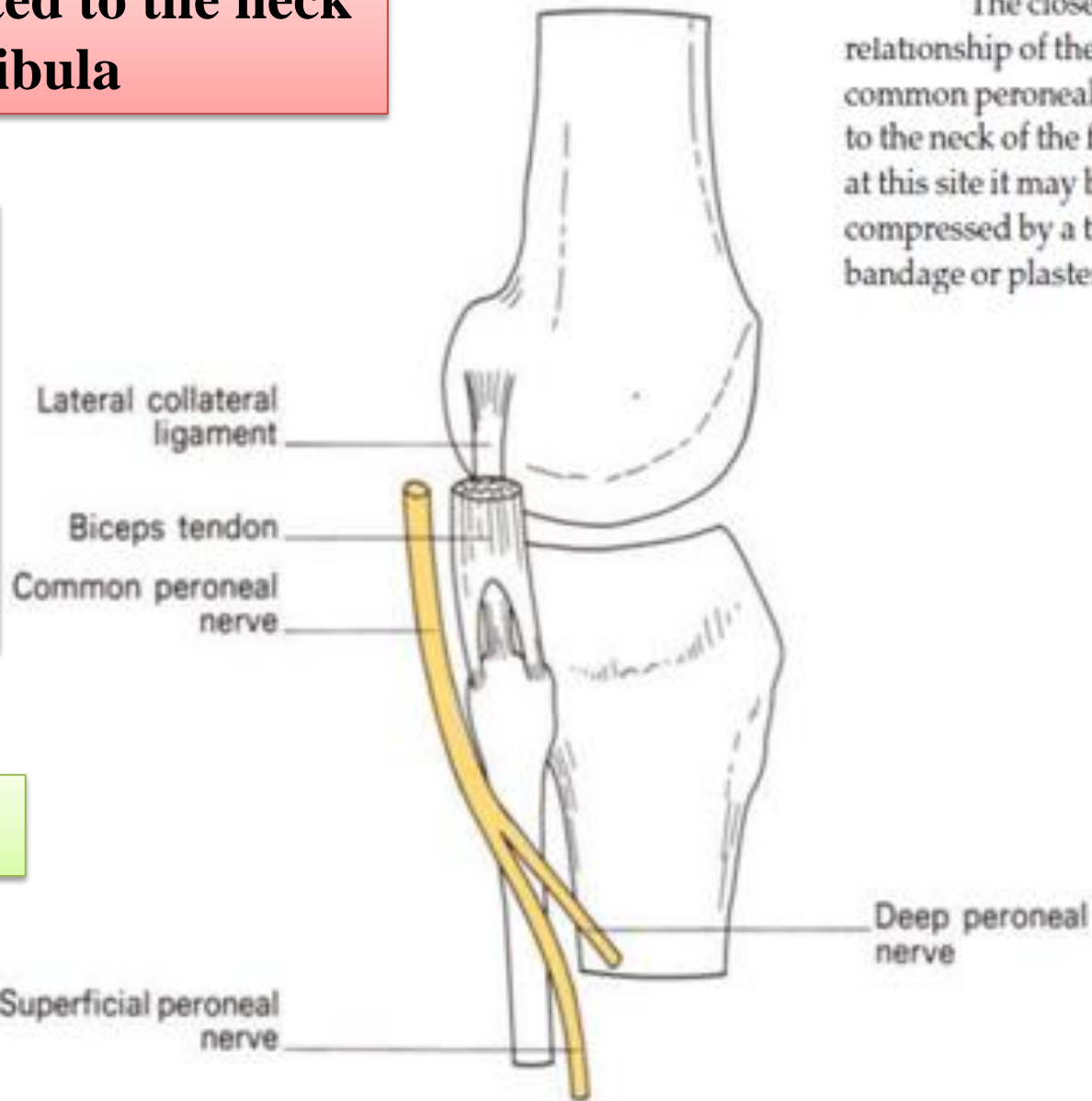
Right fibula- anterior view



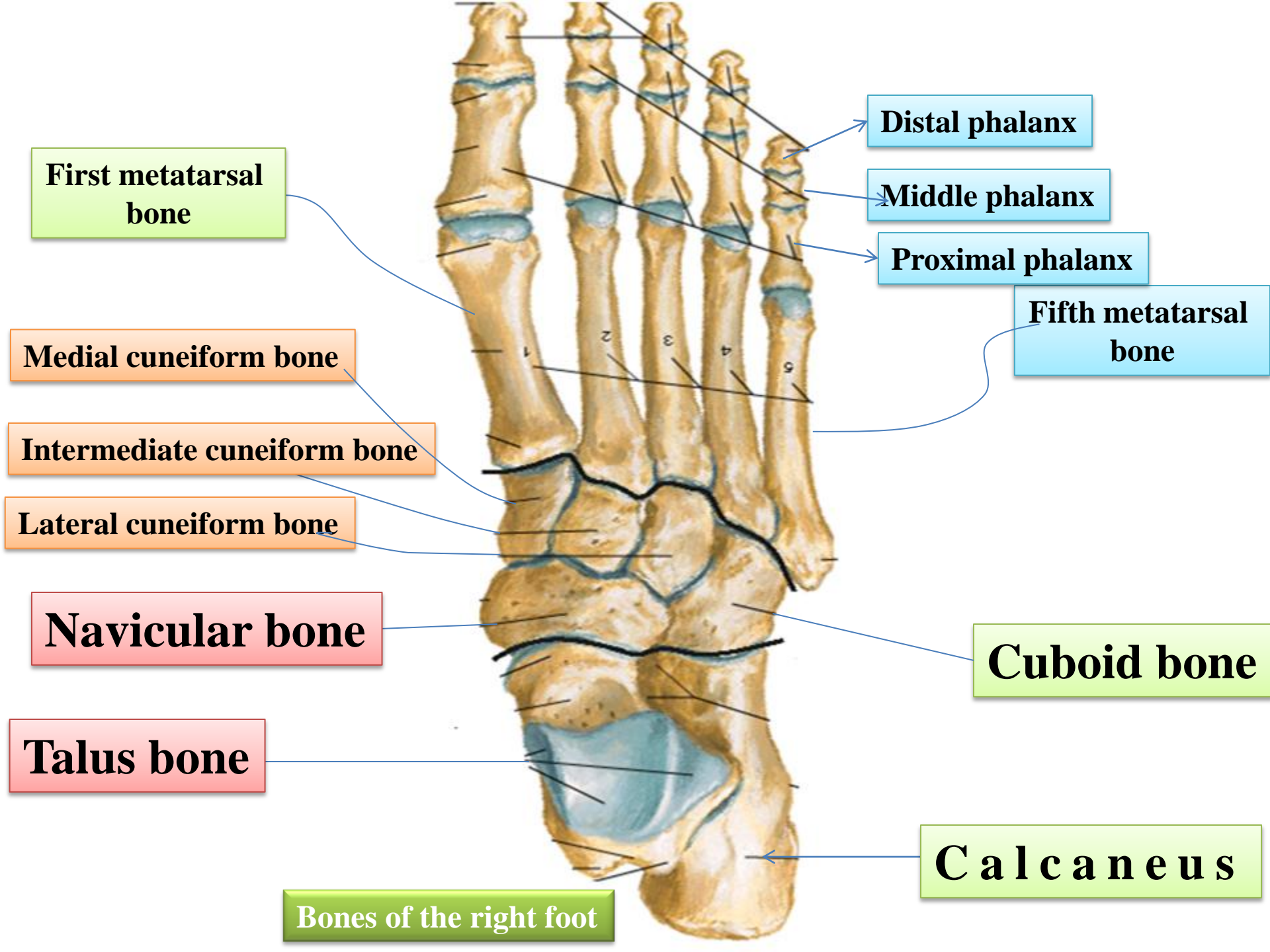
The common peroneal nerve is related to the neck of fibula

The close relationship of the common peroneal nerve to the neck of the fibula; at this site it may be compressed by a tight bandage or plaster cast.

The common peroneal nerve in this area is covered by skin and fascia only therefore it is exposed to injuries



Foot drop



First metatarsal bone

Distal phalanx

Middle phalanx

Proximal phalanx

Fifth metatarsal bone

Medial cuneiform bone

Intermediate cuneiform bone

Lateral cuneiform bone

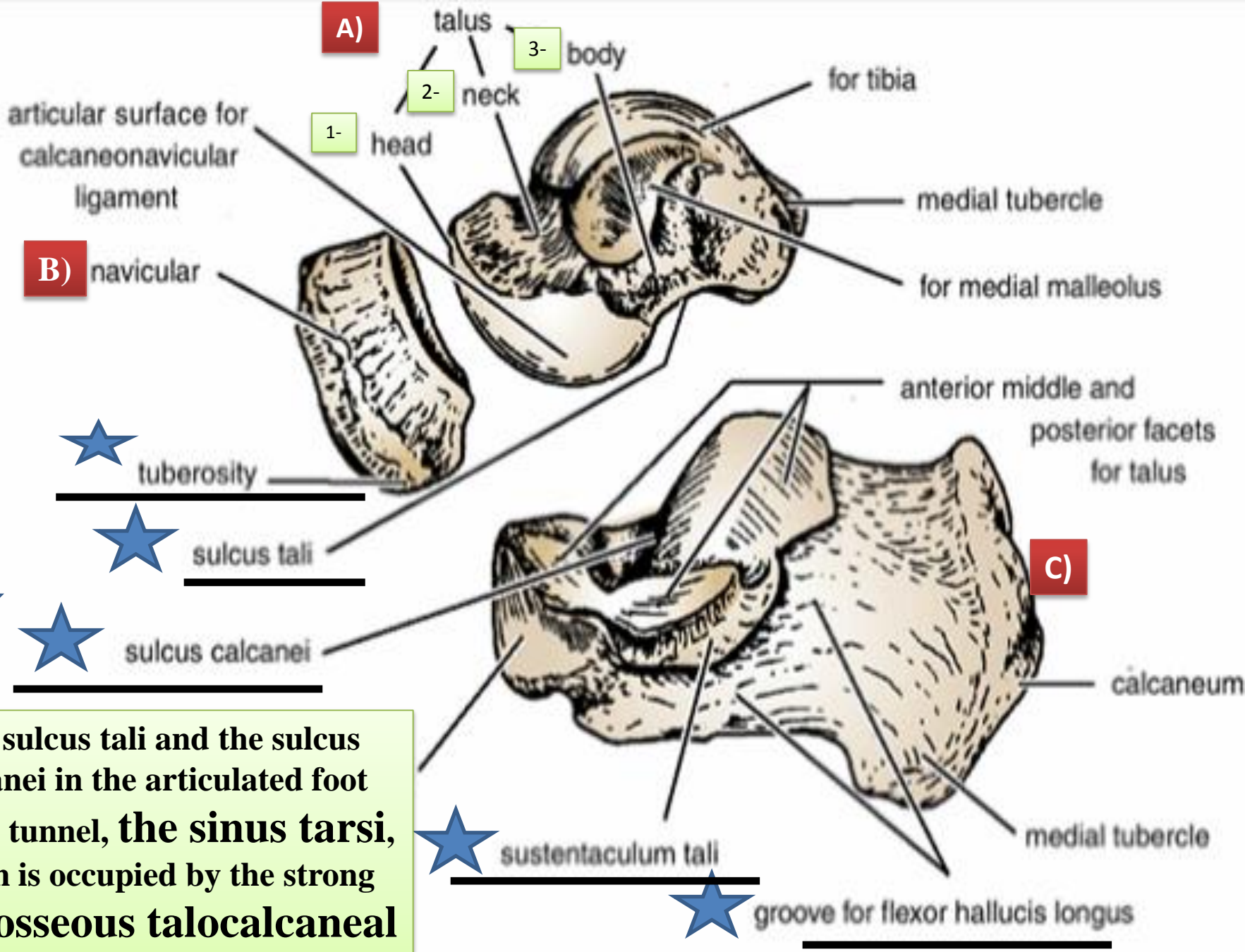
Navicular bone

Cuboid bone

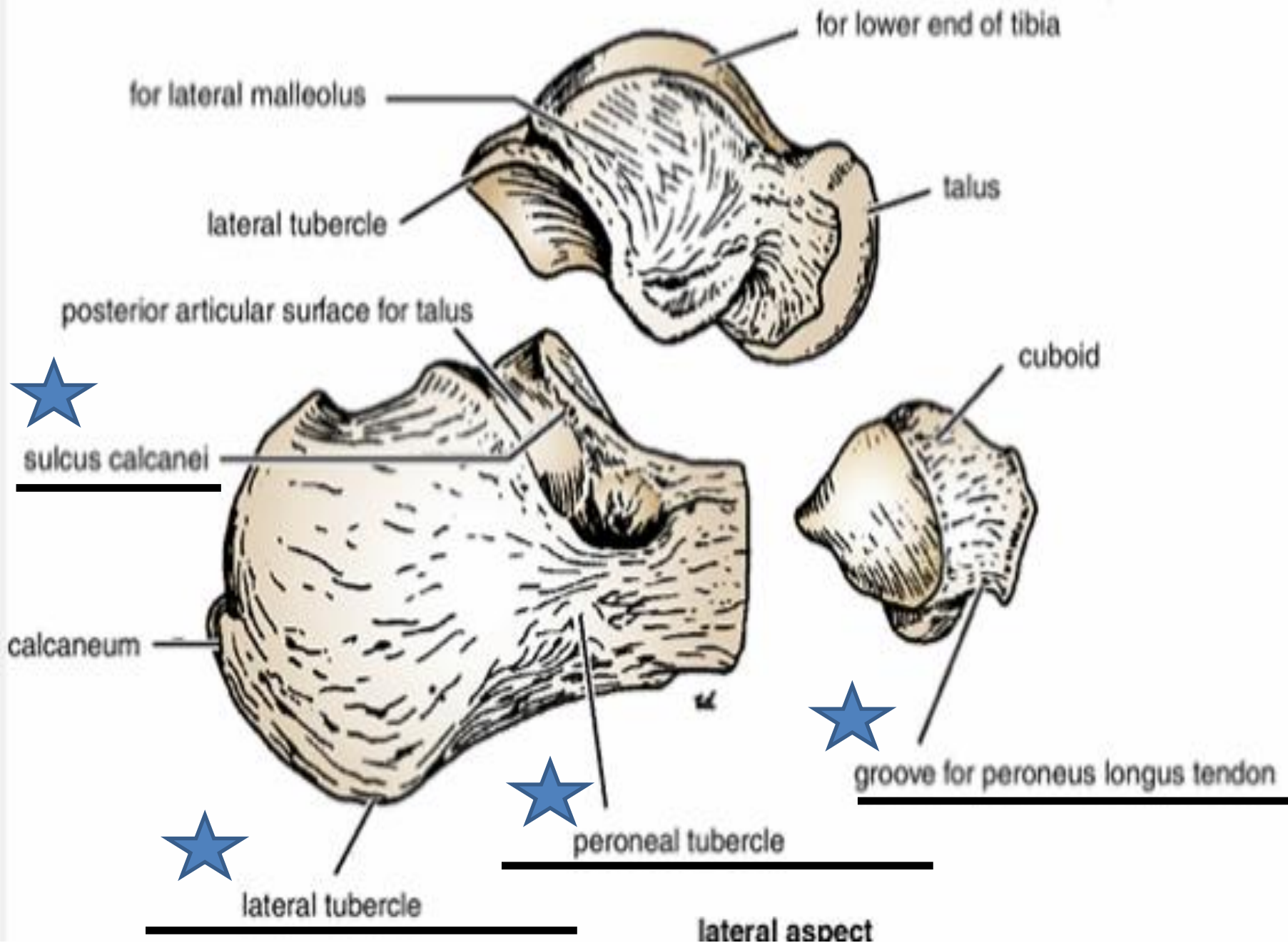
Talus bone

Calcaneus

Bones of the right foot

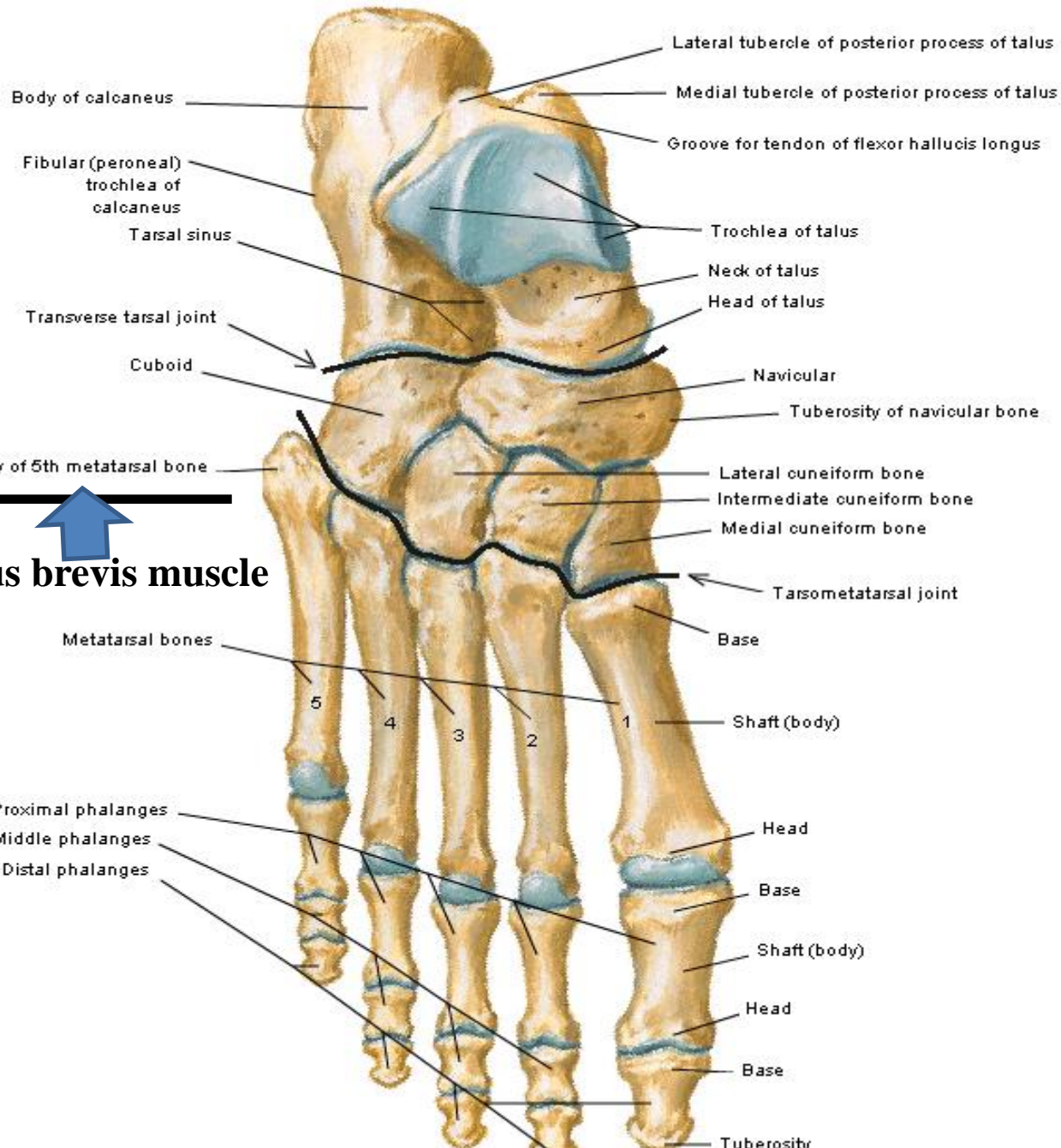


The sulcus tali and the sulcus calcanei in the articulated foot form a tunnel, the sinus tarsi, which is occupied by the strong interosseous talocalcaneal ligament.



Bones of Foot

Dorsal View

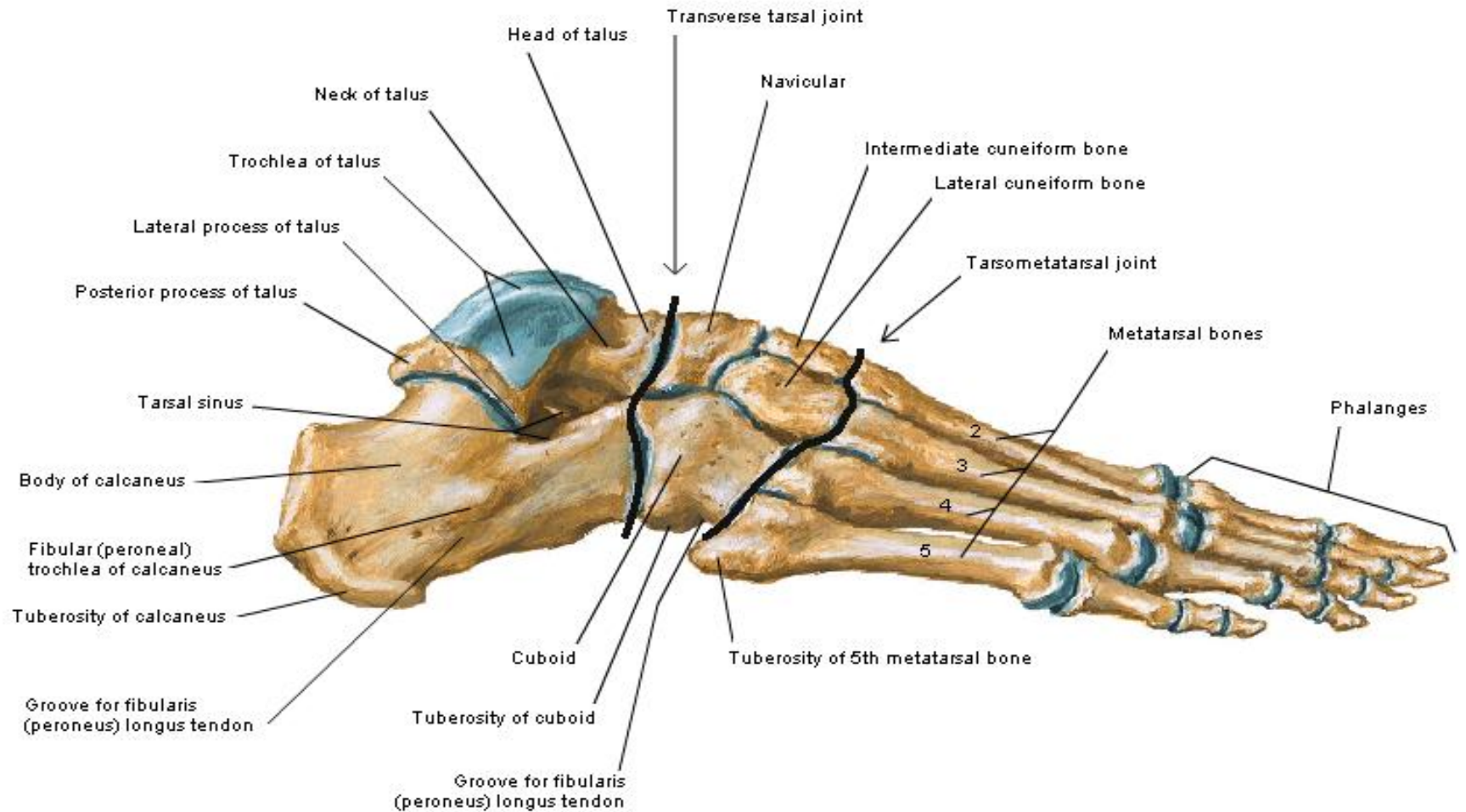


Insertion of peroneus brevis muscle



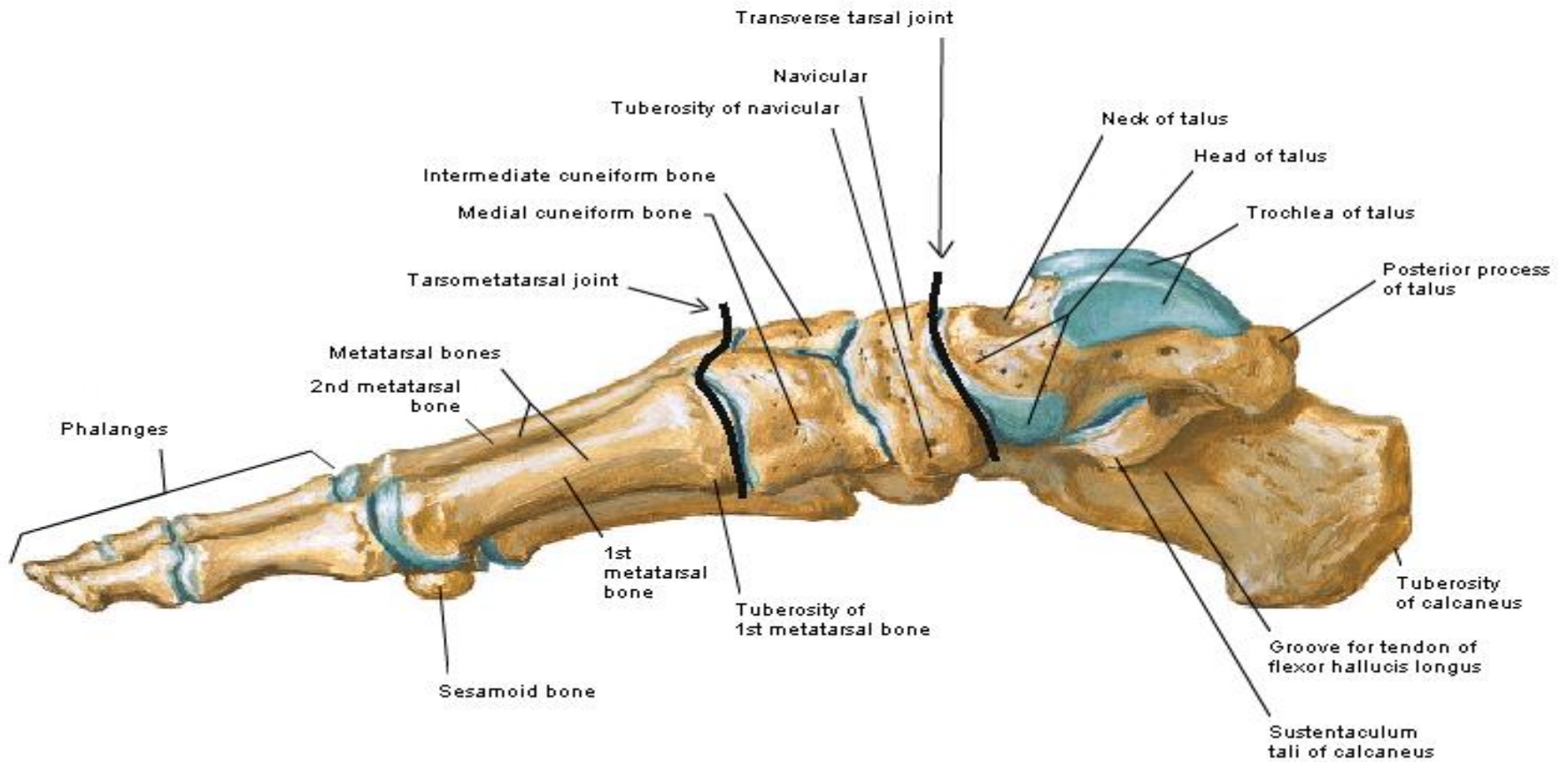
Bones of Foot

Lateral View



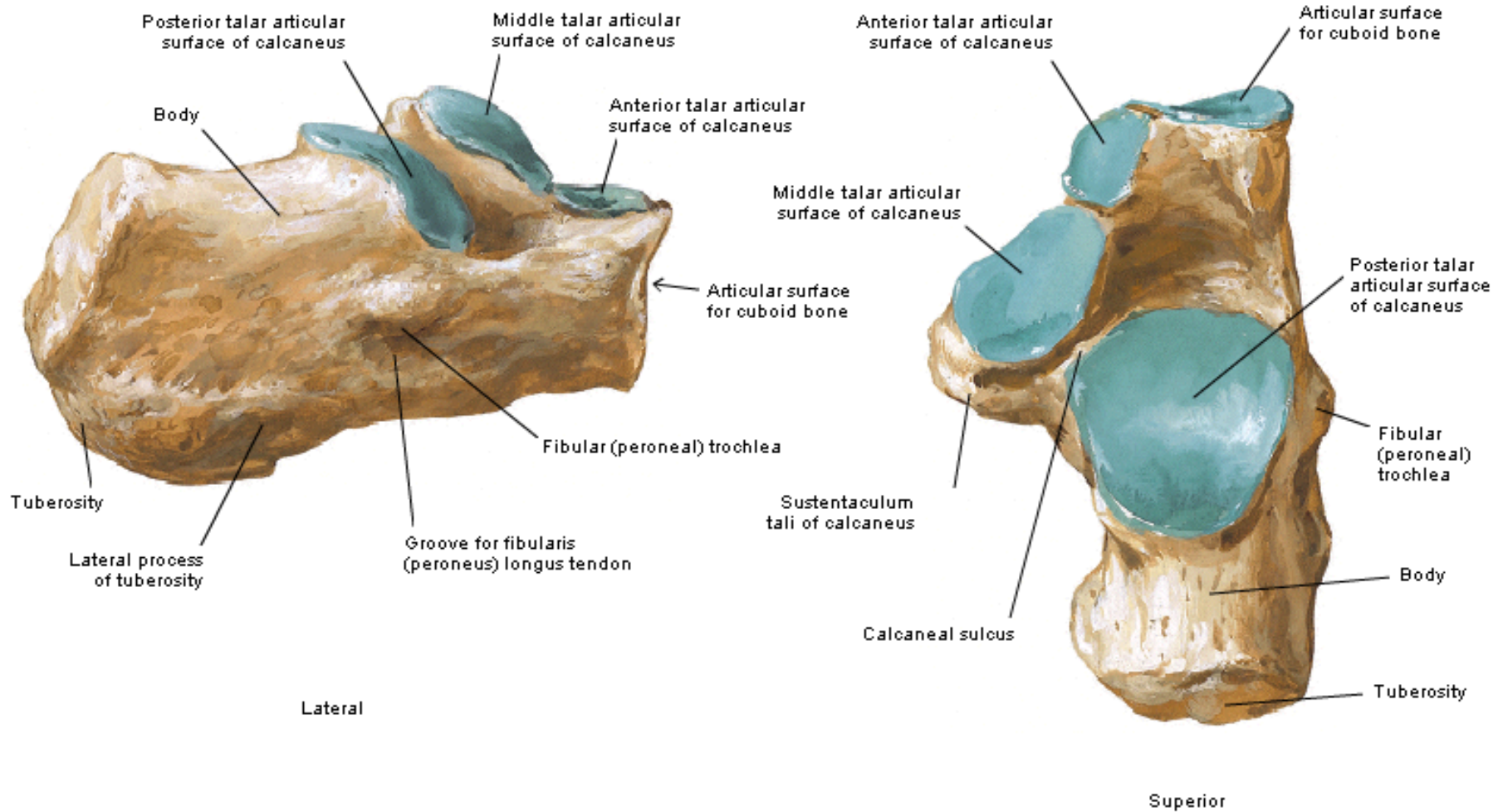
Bones of Foot

Medial View



Calcaneus of Right Foot

Lateral and Superior Views



Calcaneus of Right Foot

Medial and Posterior Views

