

Digestive System

University of Jordan
Faculty of Medicine
Batch of 2013-2019



Slide Sheet Handout Other

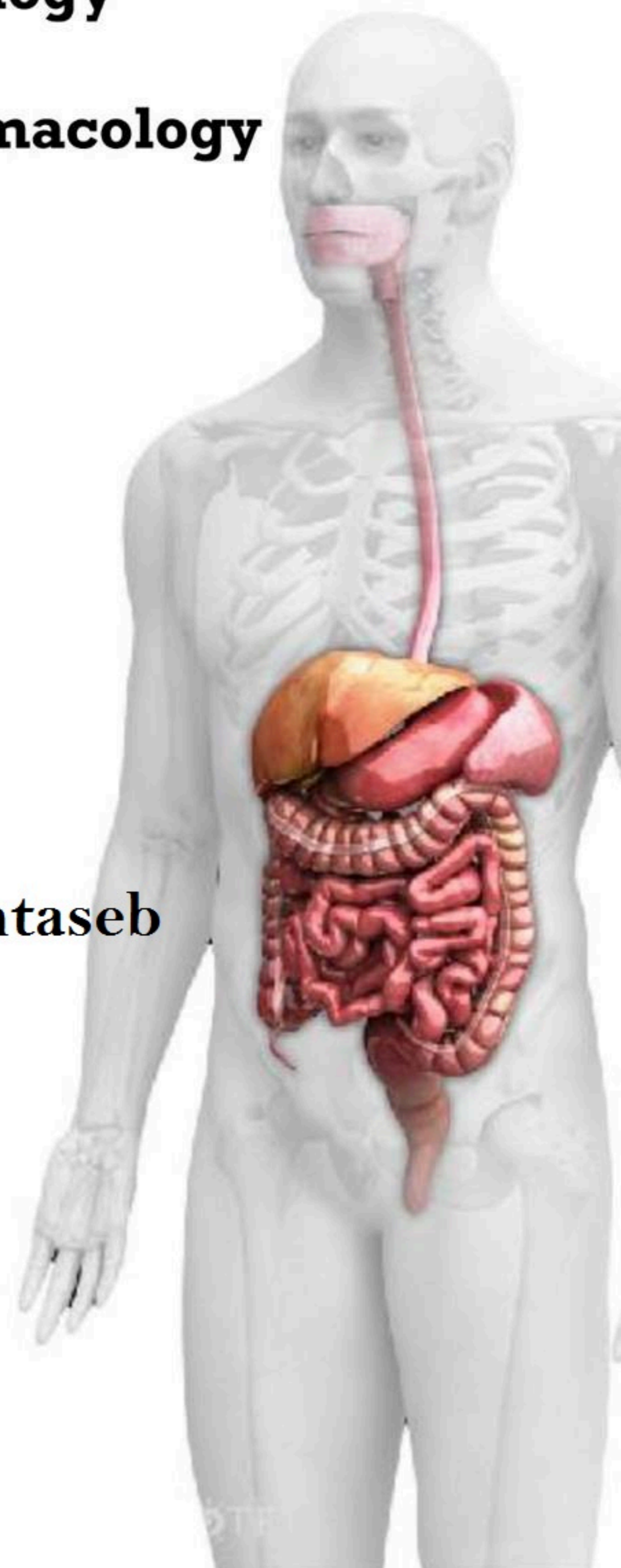
- | | |
|---|---------------------------------------|
| <input checked="" type="checkbox"/> Anatomy | <input type="checkbox"/> Embryology |
| <input type="checkbox"/> Physiology | <input type="checkbox"/> Histology |
| <input type="checkbox"/> Pathology | <input type="checkbox"/> Pharmacology |
| <input type="checkbox"/> Microbiology | <input type="checkbox"/> PBL |

Slide #: 6

Doctor: Mohammad Al-Mohtaseb

Date: 23-3-2015

Price:

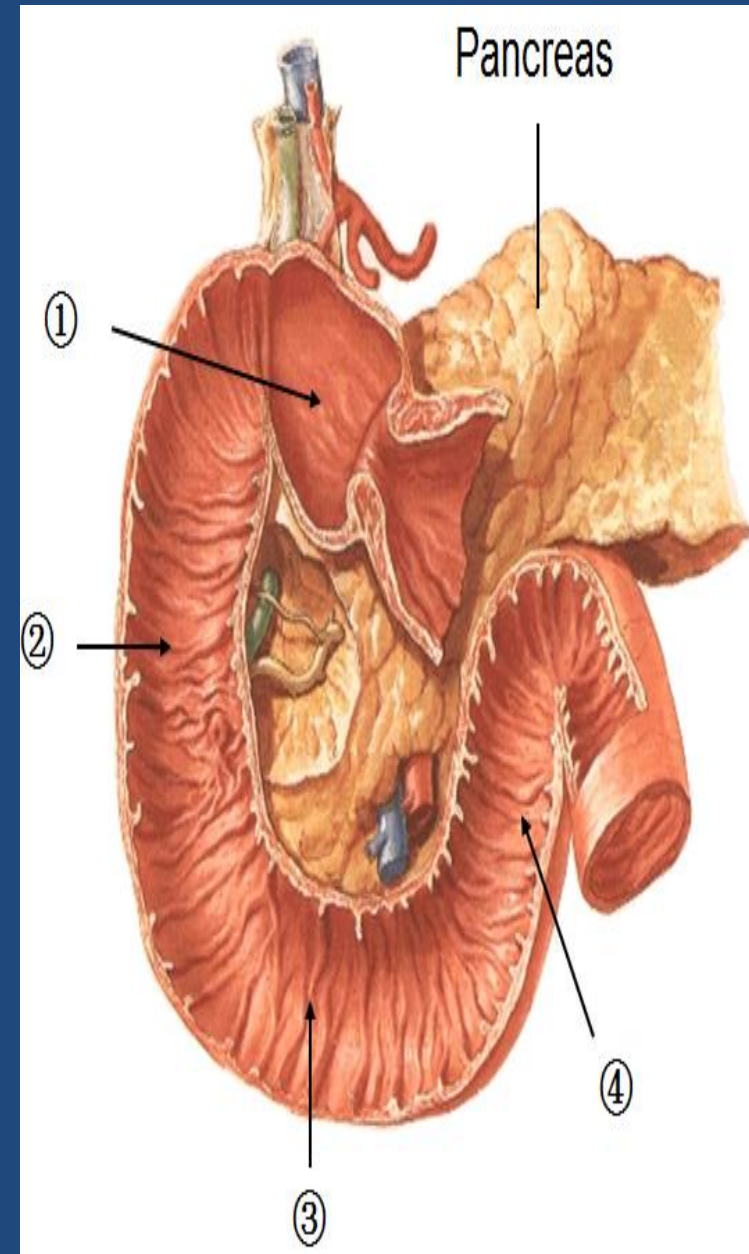


The small intestine

DOUDENUM

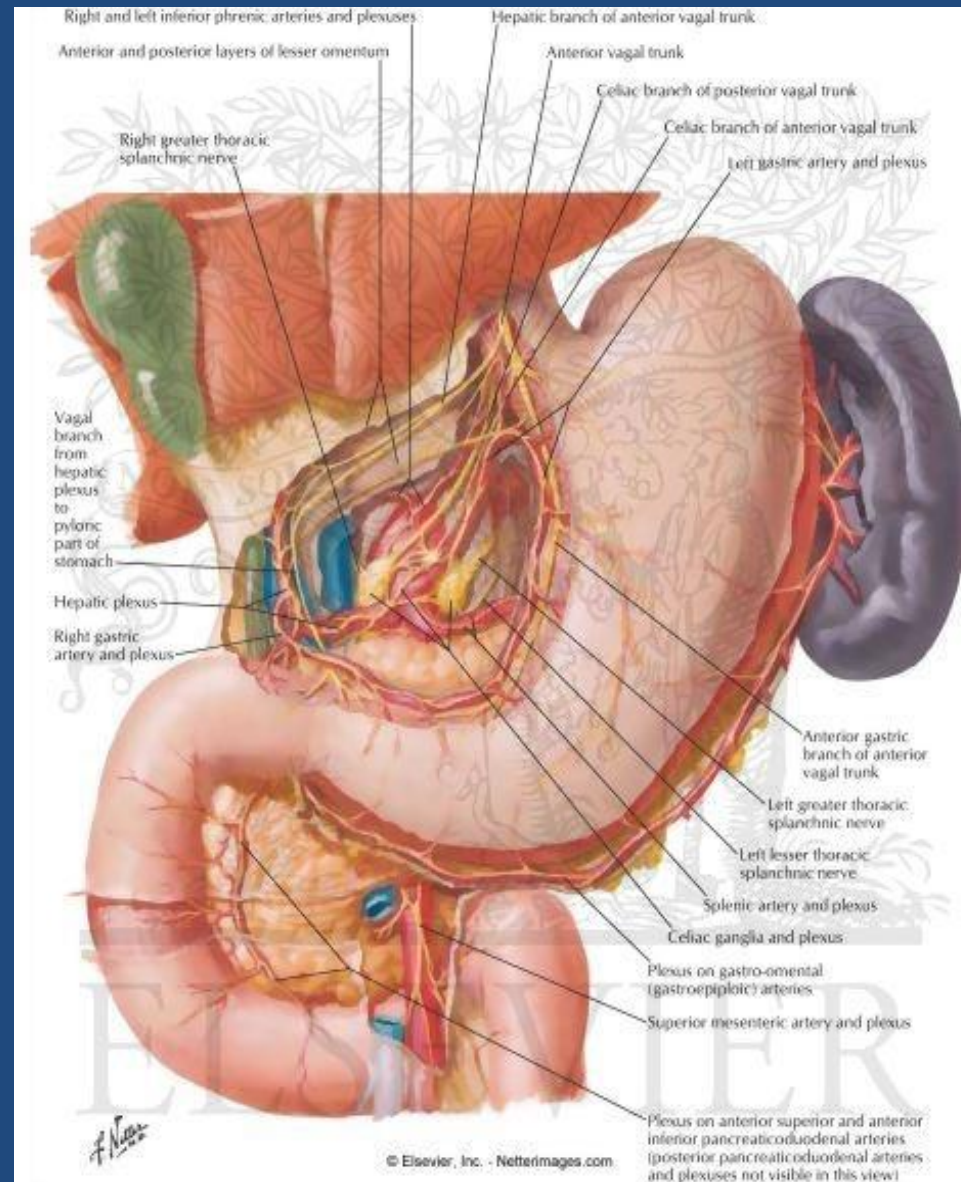
duodenum

- The duodenum is a c-shaped
- Concave tube
- About 10" in length.
- It joins the stomach to the jejunum.
- It curves around the head of the pancreas to the left and backwards.
- It is important because it receives the opening of the bile and pancreatic ducts.



duodenum...cont

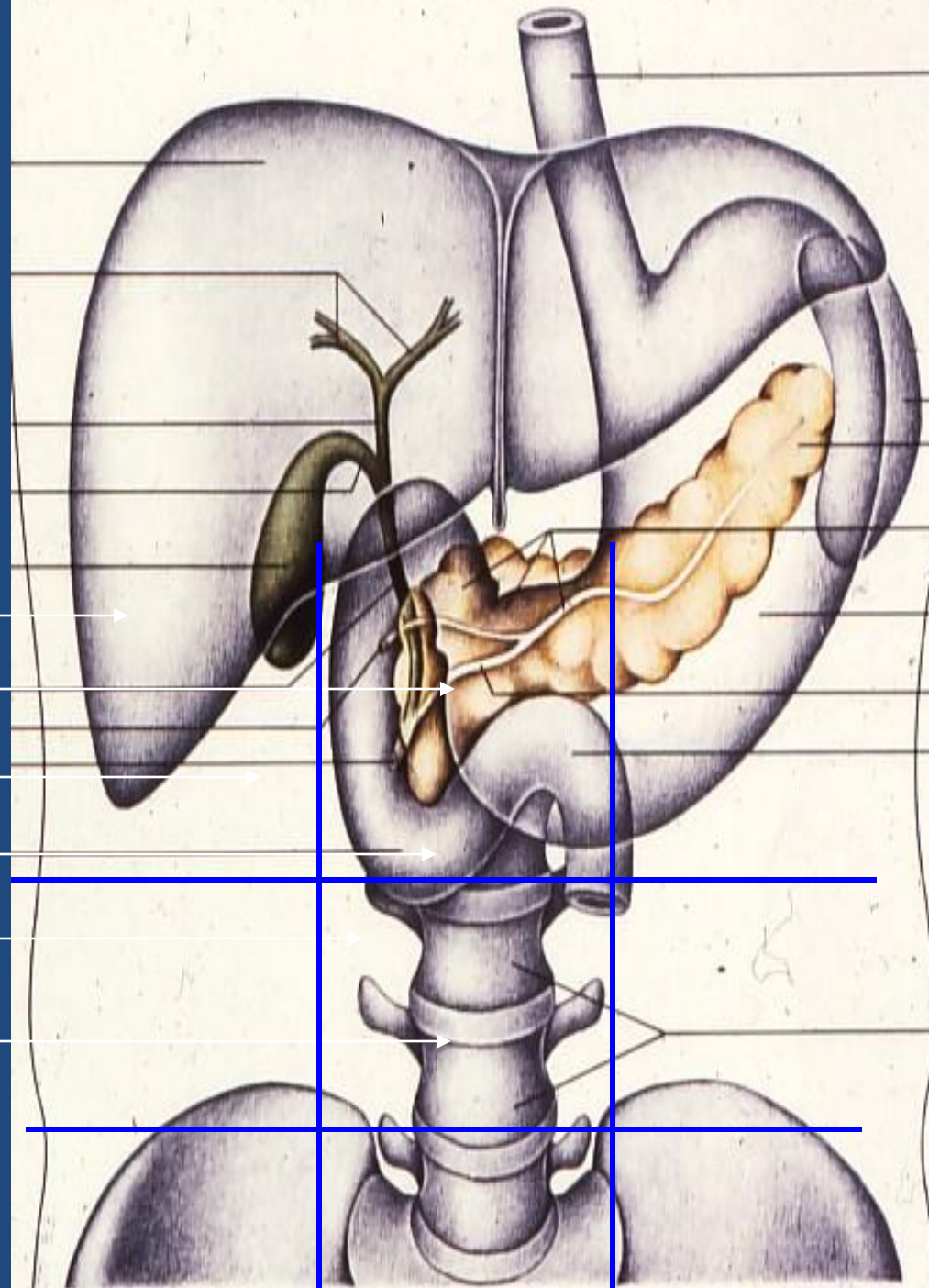
- Most of the duodenum is retroperitoneal except the 1st inch & last inch
- This short segment(1st inch) has the lesser omentum on its upper border, the greater omentum on its lower border, and the lesser sac posterior to it
- The duodenum extends from the pylorus to the jejunum
- It is divided into 4 parts.



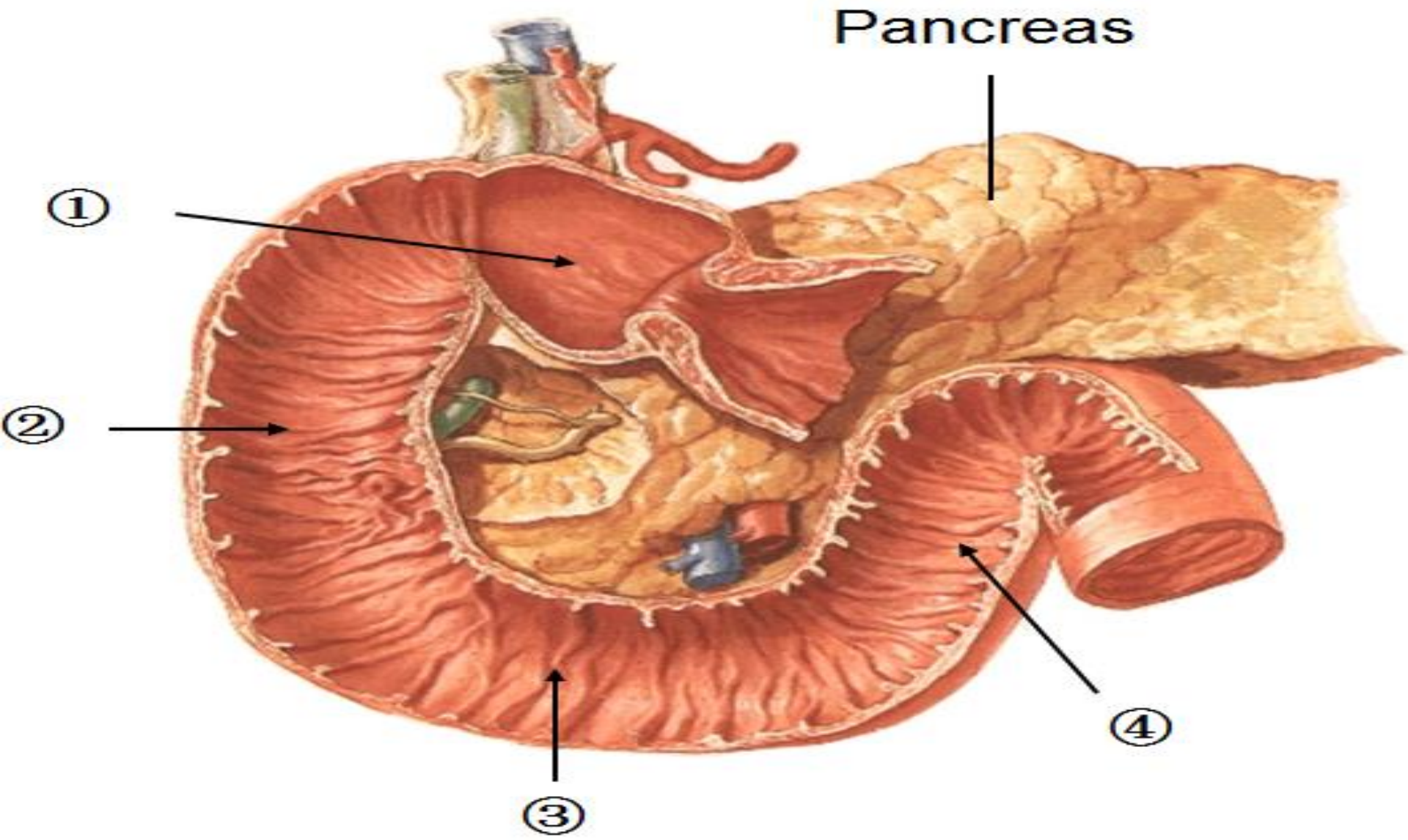
Site of duodenum

- The duodenum is situated in the **epigastric and umbilical regions**
- for purposes of description, is divided into four parts

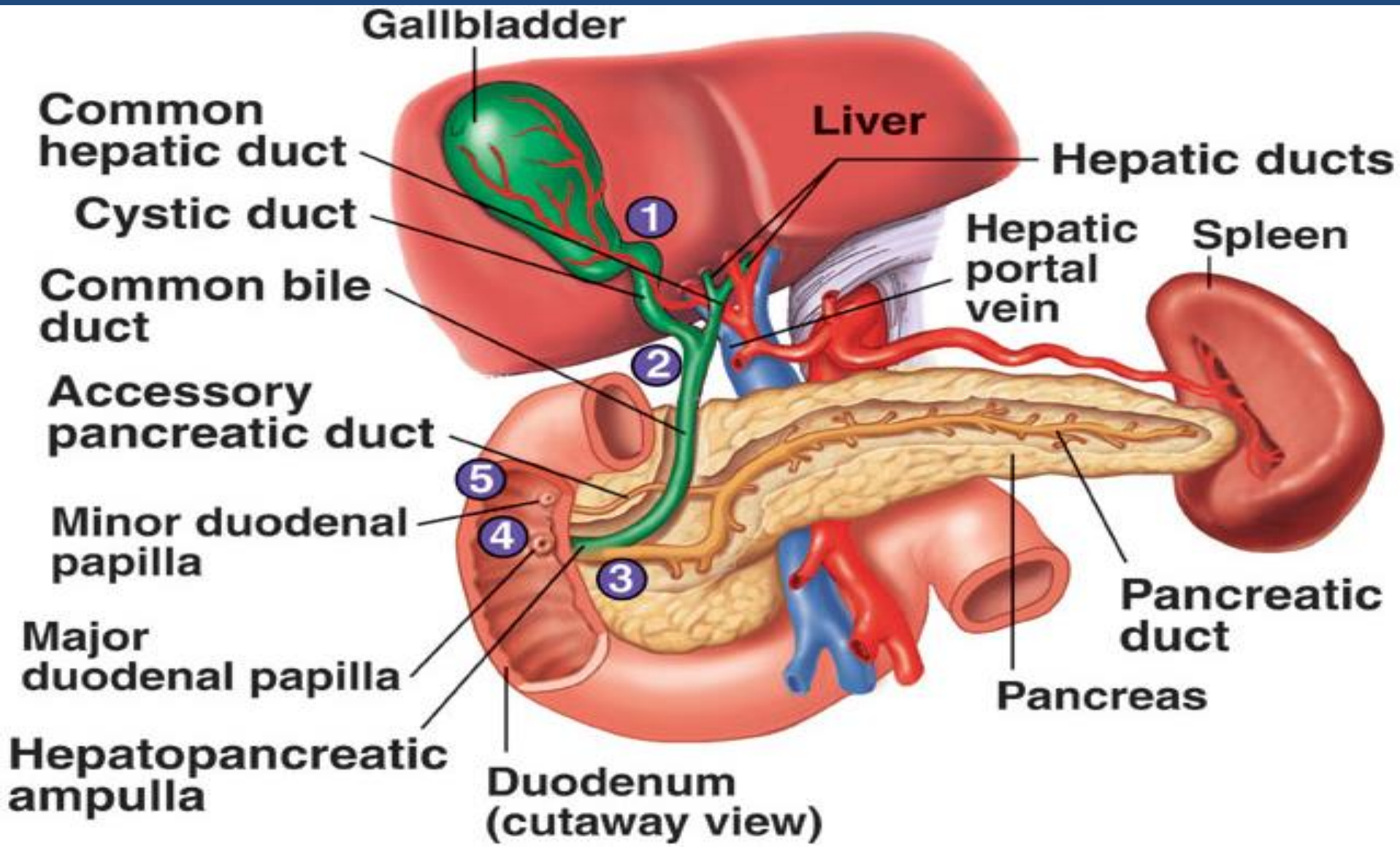
Right lobe of liver
Falciform ligament
Gallbladder
Pancreas
Duodenum
L-3



Parts of the duodenum & Their relations

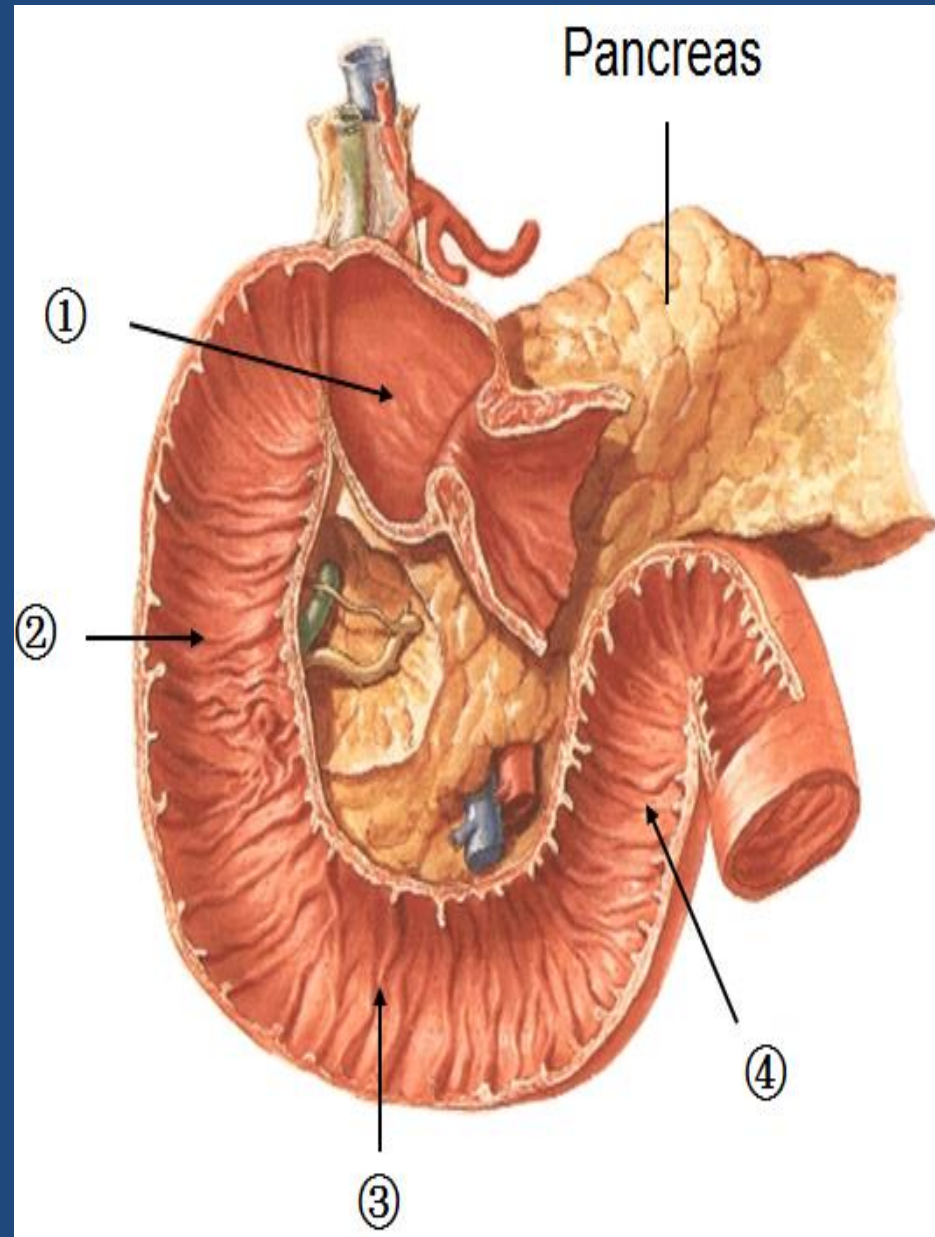


Parts of the duodenum & Their relations



1st part of Duodenum

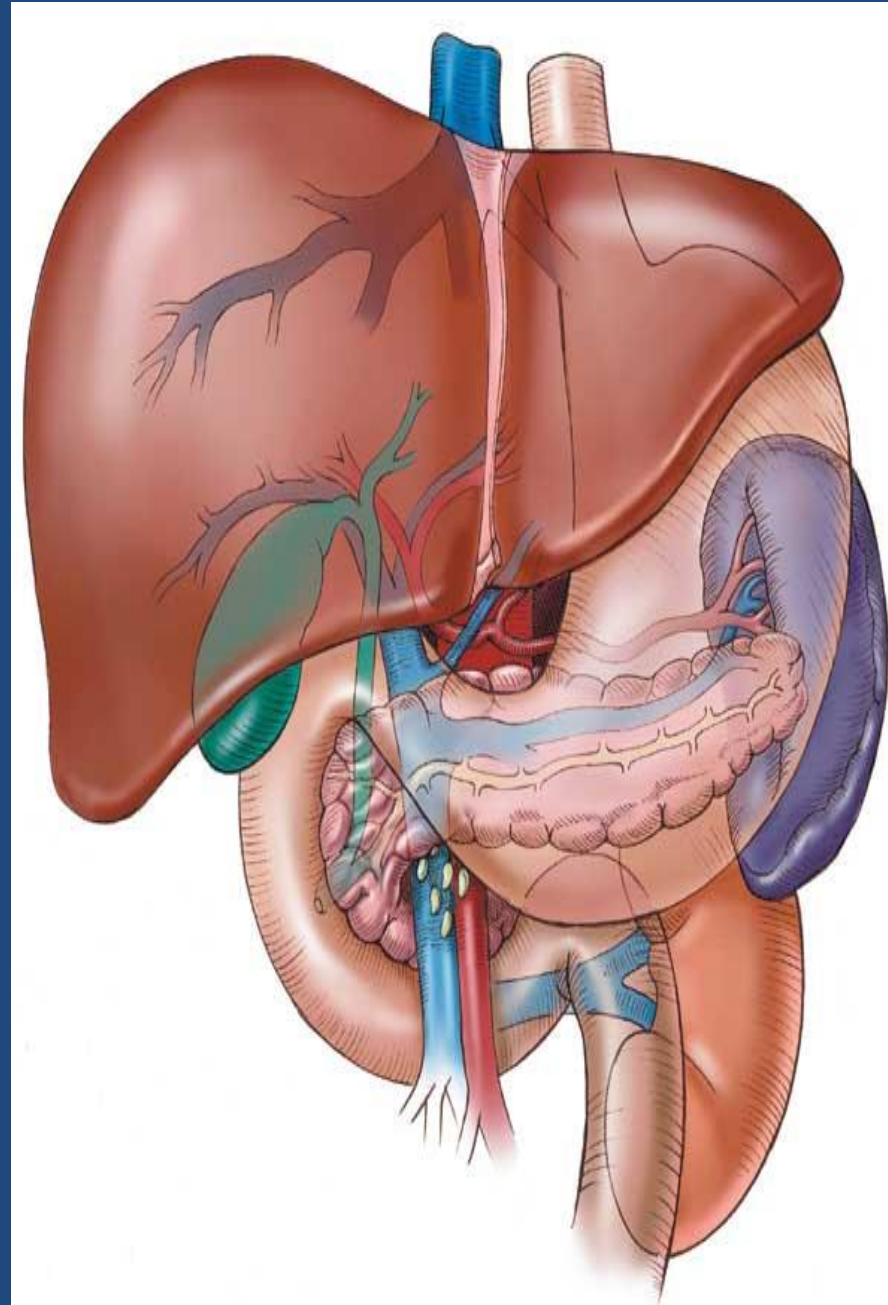
- The first part is 2 inches long.
- It begins from the pyloduodenal junction
- At the level of the transpyloric line
- Runs upward and backward at the level of the 1st lumbar vertebra 1 inch to the right.



Relations of 1st part of doudenum

Ant.

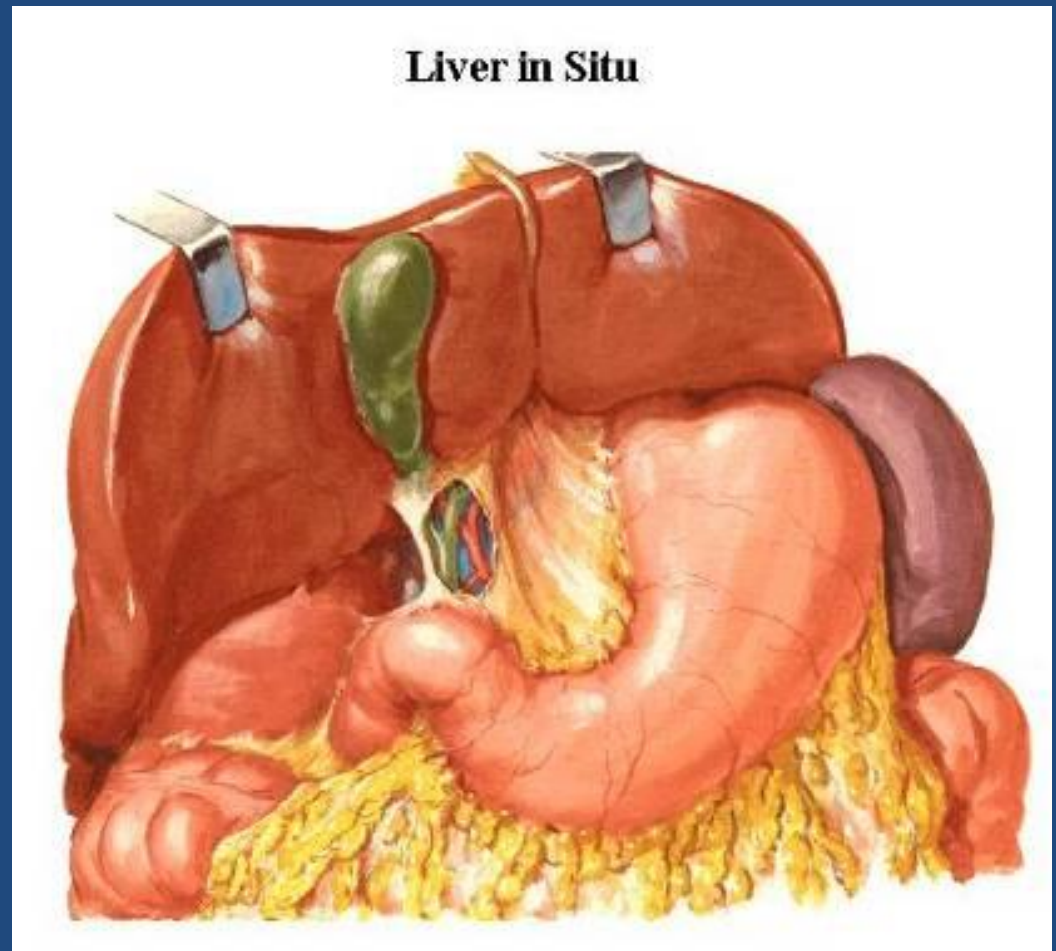
- The liver (quadratus lobe)
- gall bladder



Relations of 1st part of duodenum.....cont

Sup.

- the epiploic foramen



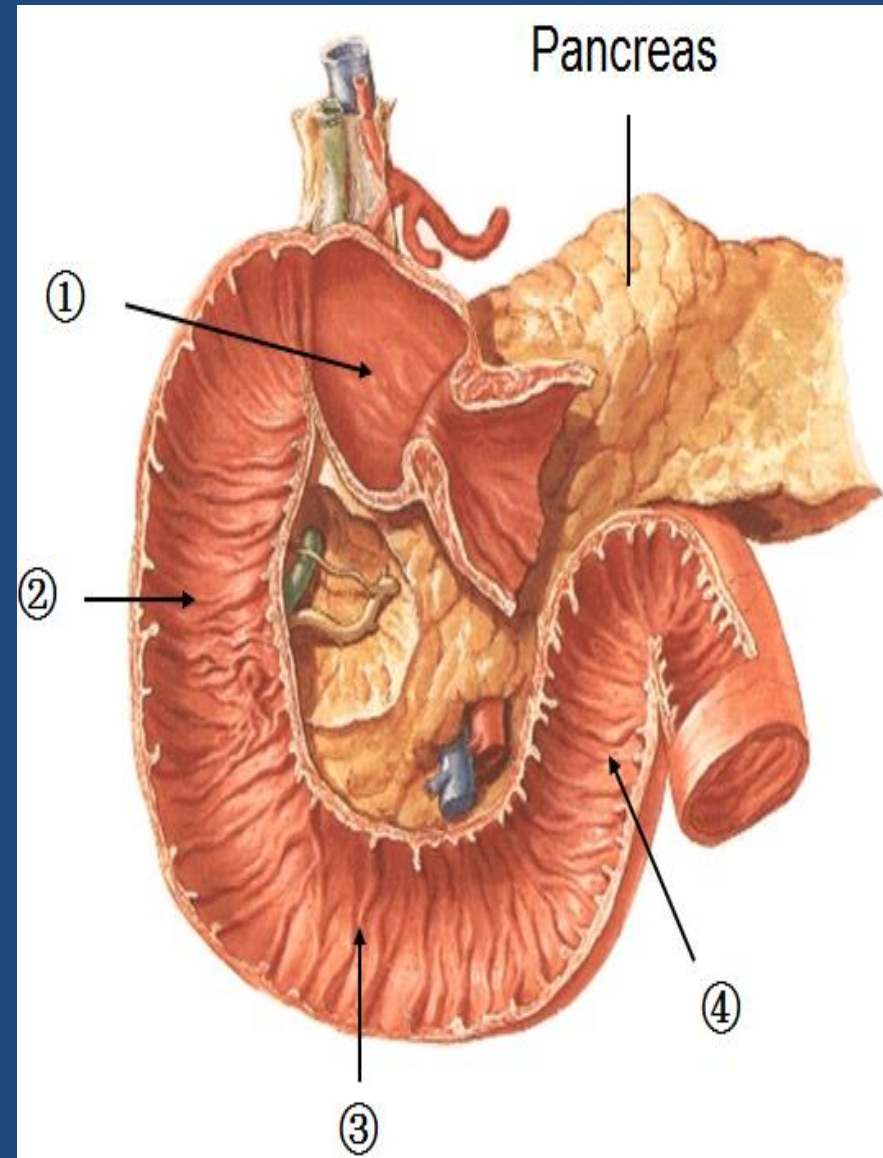
Relations of 1st part duodenum.....cont

post.

- The lesser sac
- gastroduodenal Artery
- the Bile duct
- portal vein
- I.V.C

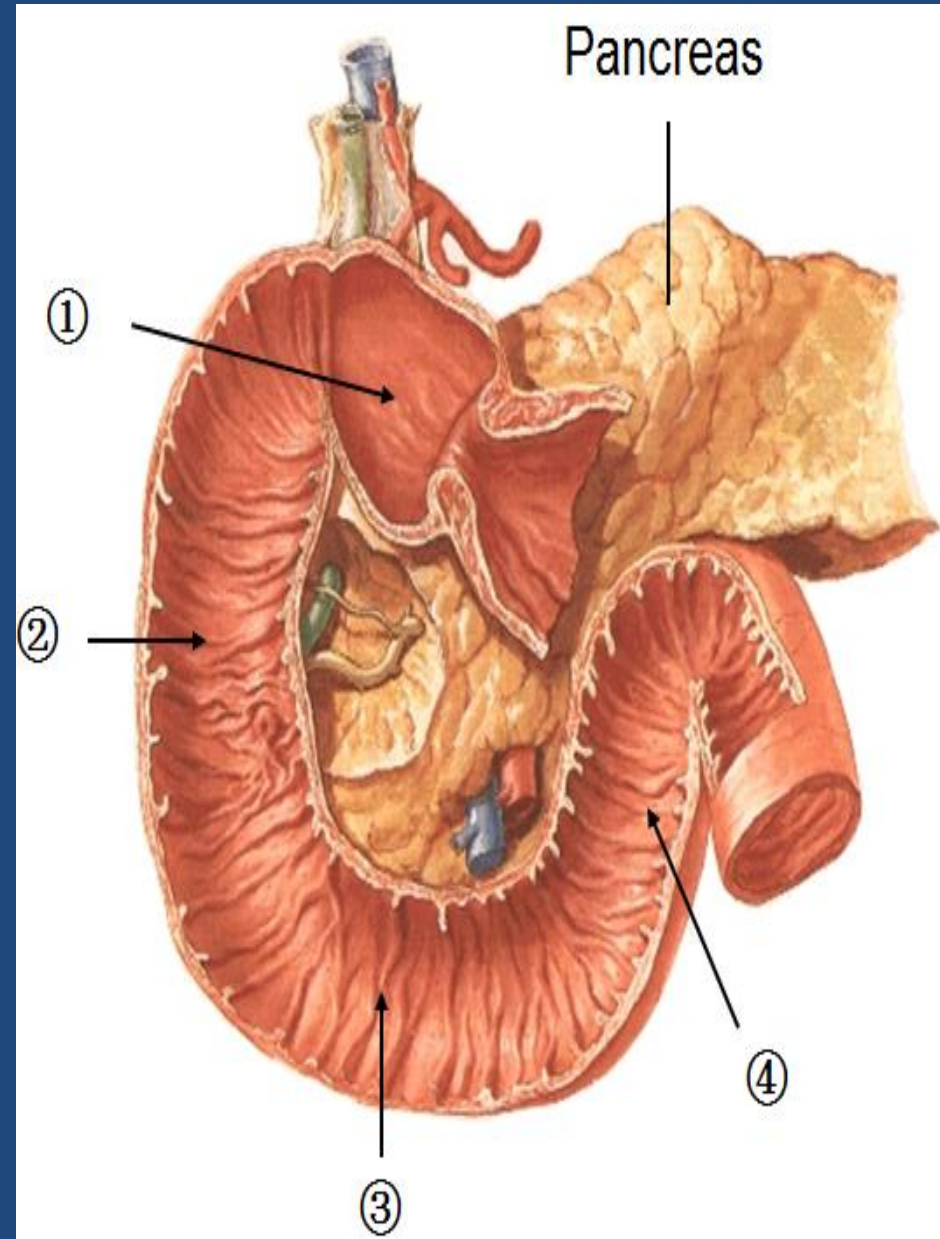
Inf.

- The head of the pancreas.



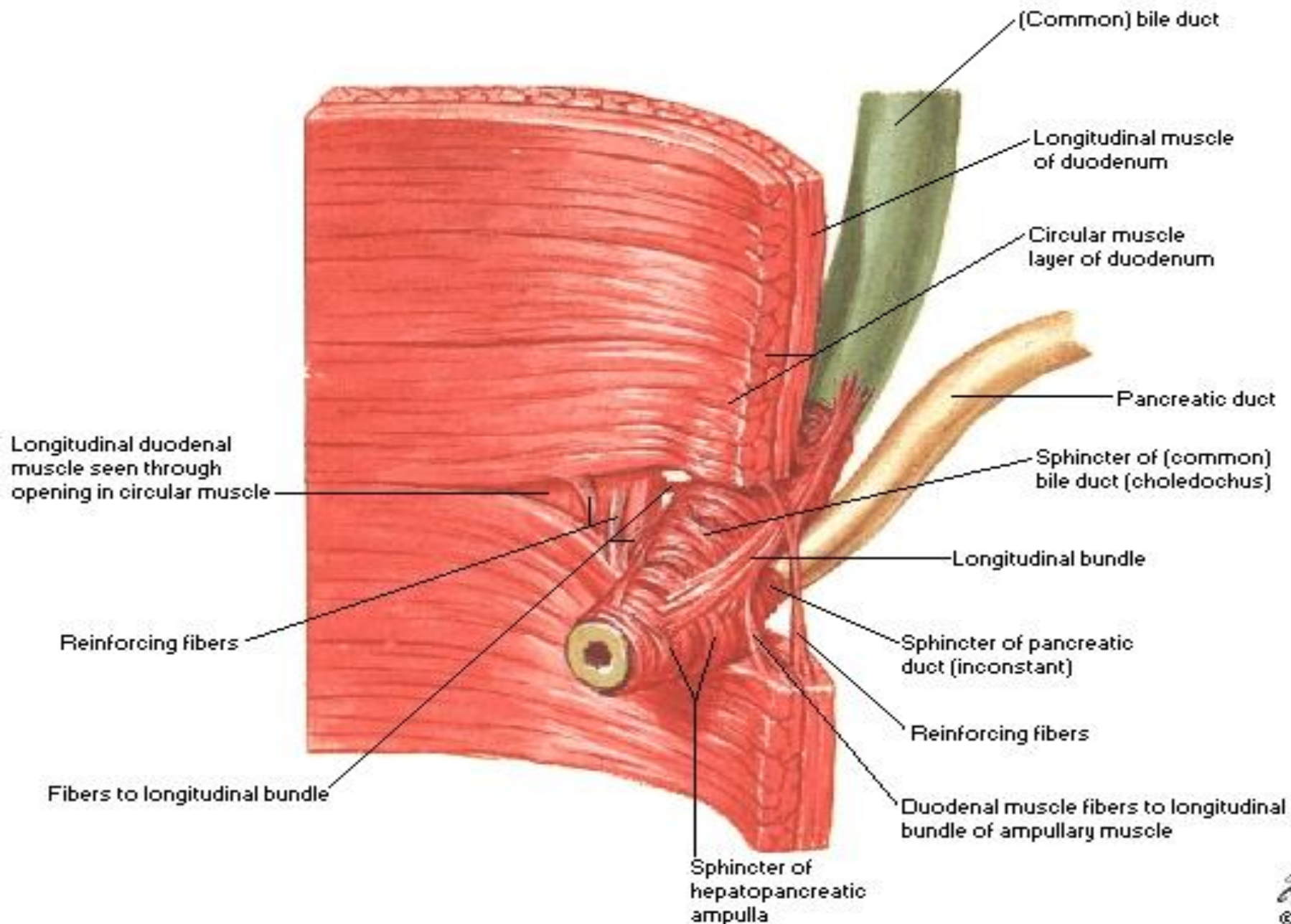
2nd part of duodenum

- It is 3" (3 inch) long
- runs downward vertically on the right side
- In front of the Rt. kidney
- next to the 3rd and 4th lumbar vertebrae.
- halfway of it, The bile duct and the main pancreatic duct pierce the medial wall, and then form the **ampulla** that opens in the **major duodenal papilla**.
- The accessory pancreatic duct (if present) opens in the **minor duodenal papilla** more superiorly.



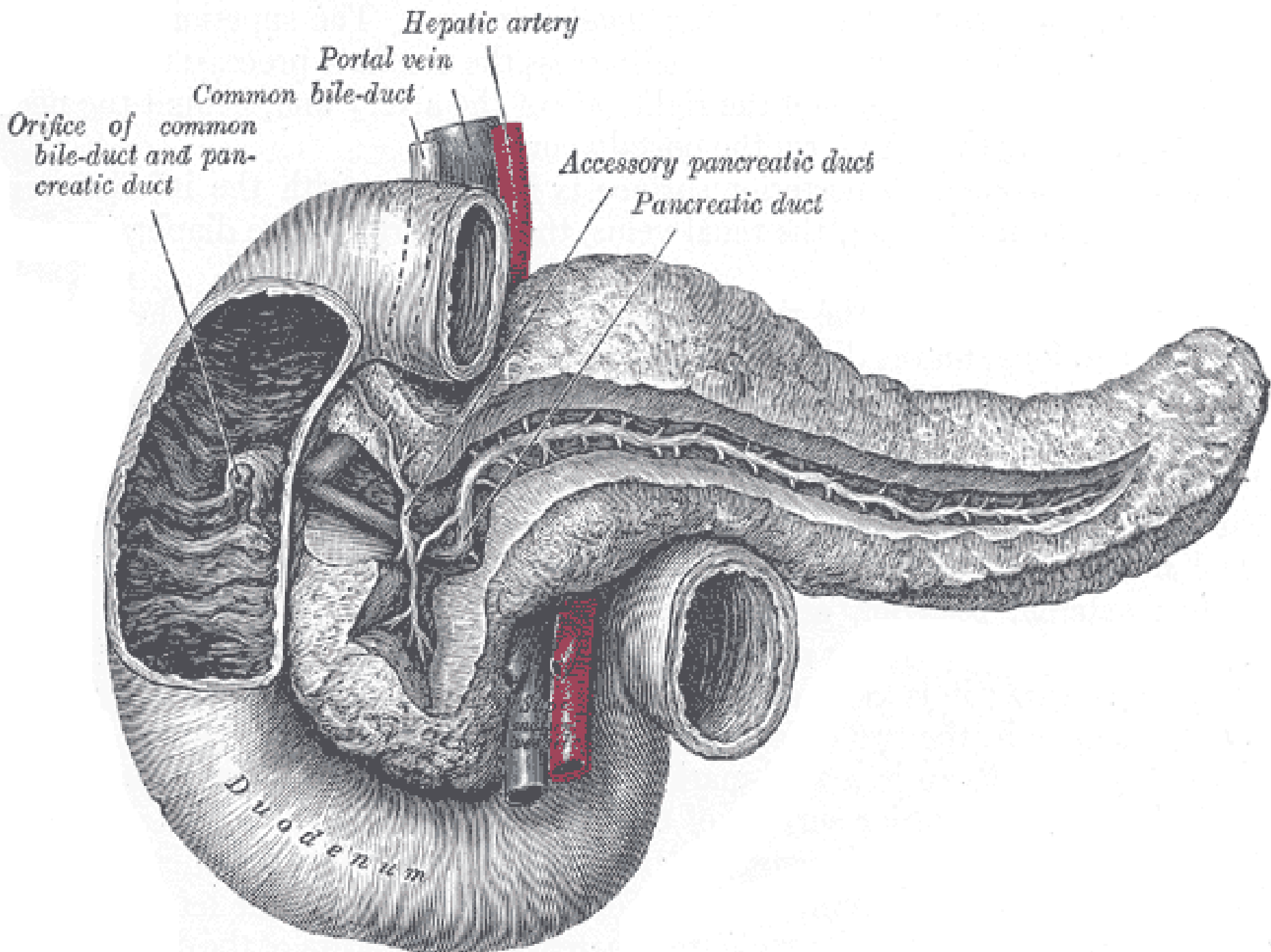
Junction of Bile Duct and Duodenum

Dissection



Hepaticopancreatic ampulla (Ampulla of Vater)





Hepatic artery

Portal vein

Common bile-duct

*Orifice of common
bile-duct and pan-
creatic duct*

Accessory pancreatic duct

Pancreatic duct

Duodenum

Relations of 2nd part of duodenum

Ant.

- The gallbladder (fundus)
- Right lobe of the liver
- Transverse colon
- coiled of small intestine.

Post.

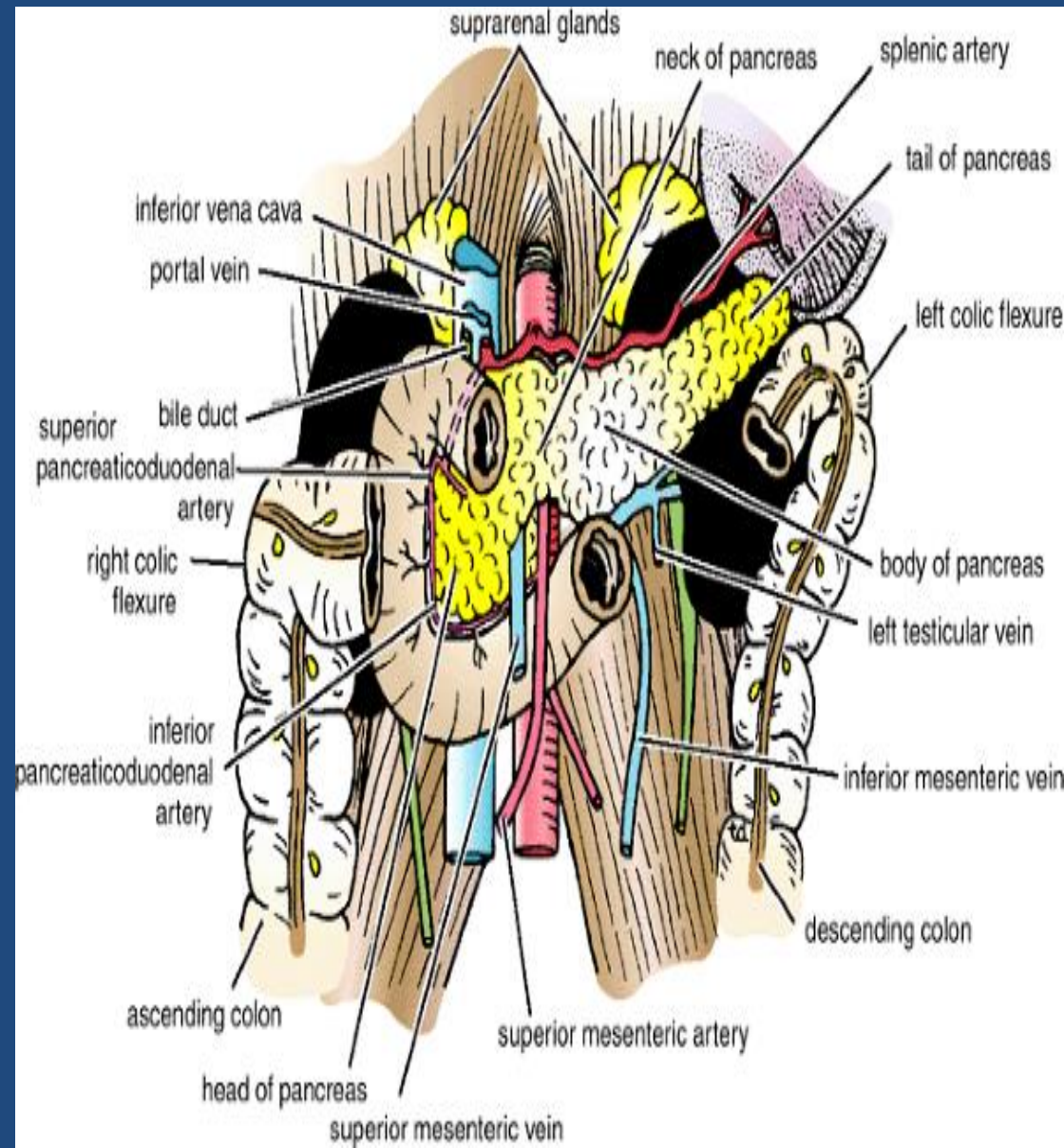
- Hilum of Rt. Kidney
- Rt. Ureter.

Lateral.

- Right colic flexure
- Ascending colon
- Right lobe of the liver.

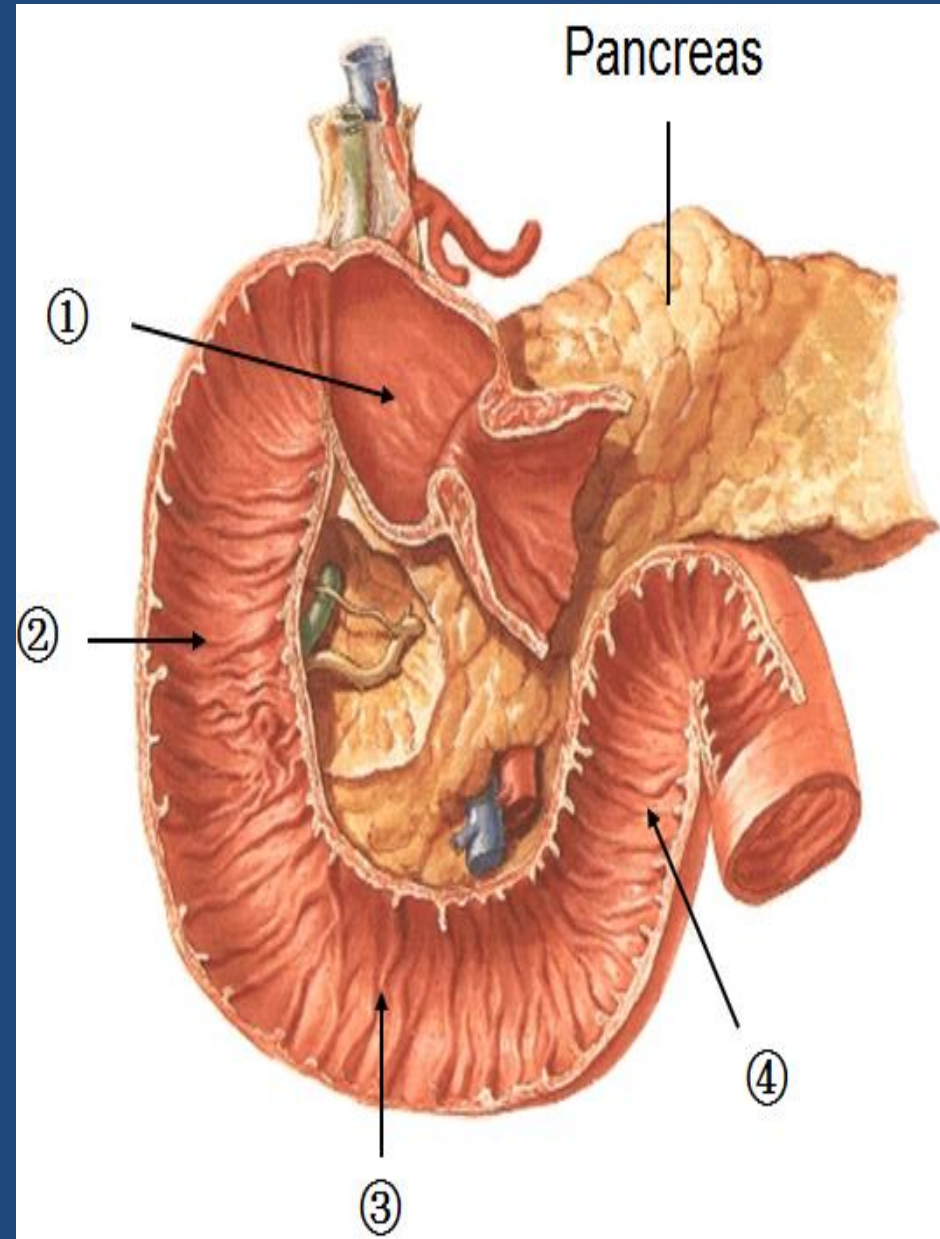
Medial.

- Head of pancreas
- Bile and pancreatic ducts.



3rd part of duodenum

- 4" long
- Runs horizontally to the left
- On the subcostal plane.
- Runs in front of the vertebral column
- Under the lower margin of the head of pancreas
- Above the coils of the jejunum.



Relations of 3rd part of duodenum

Anteriorly:

- The root of the mesentery of the small intestine
- the superior mesenteric vessels contained within the mesentery
- coils of jejunum -

Posteriorly:

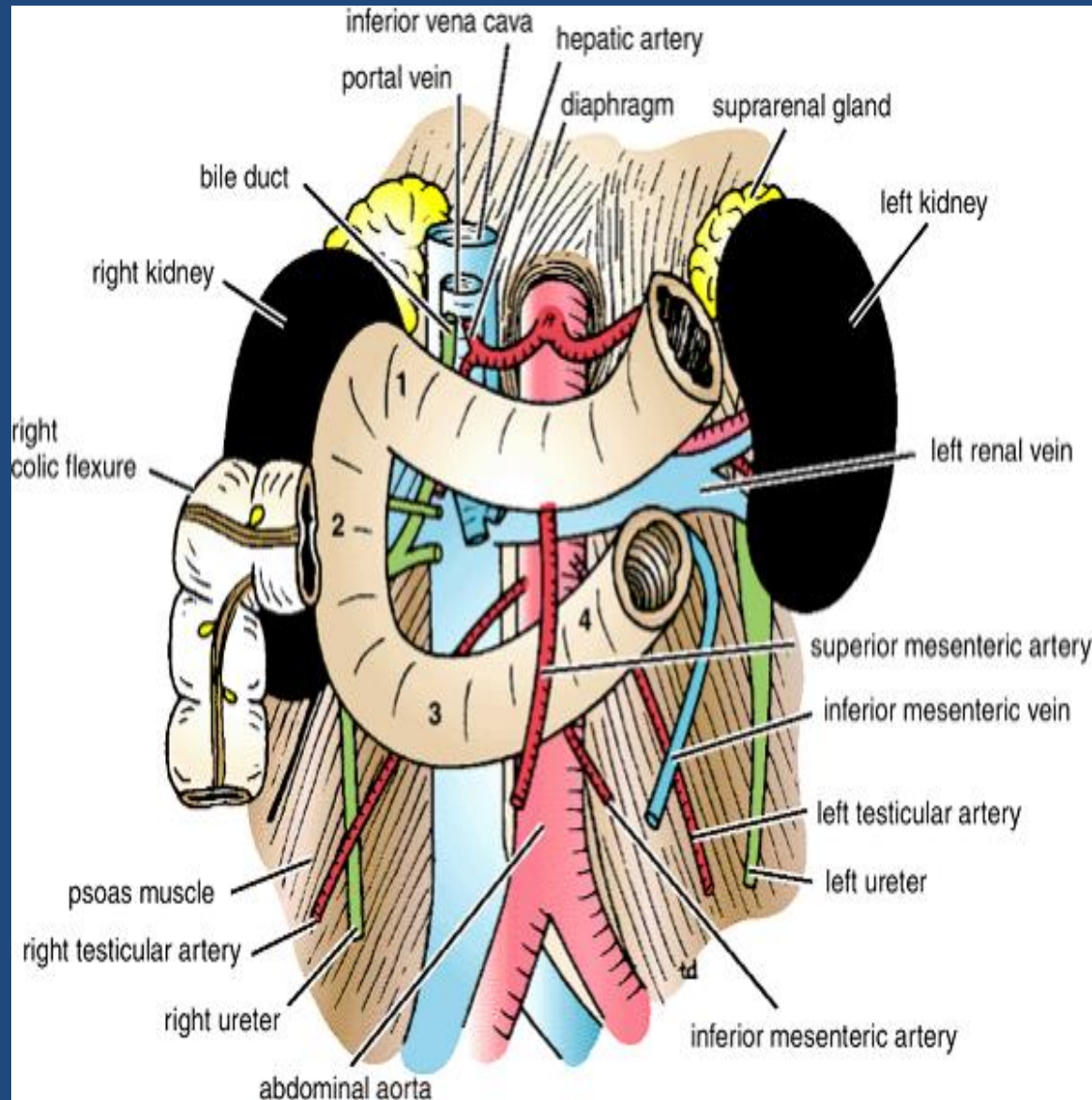
- The right ureter-
- the right psoas muscle-
- the inferior vena cava -
- the aorta -

Superiorly:

- The head of the pancreas

Inferiorly:

- Coils of jejunum



4th part of duodenum....cont

- 1" long
- Runs upward to the left
- End in the duodejejunal junction at the level of the 2nd lumbar vertebrae 1" to the left.
- The junction (flexure) is held in position by the **ligament of Treitz**, which is attached to the right crus of the diaphragm (duodenal recess).

Relation of 4th part of duodenum

Ant.

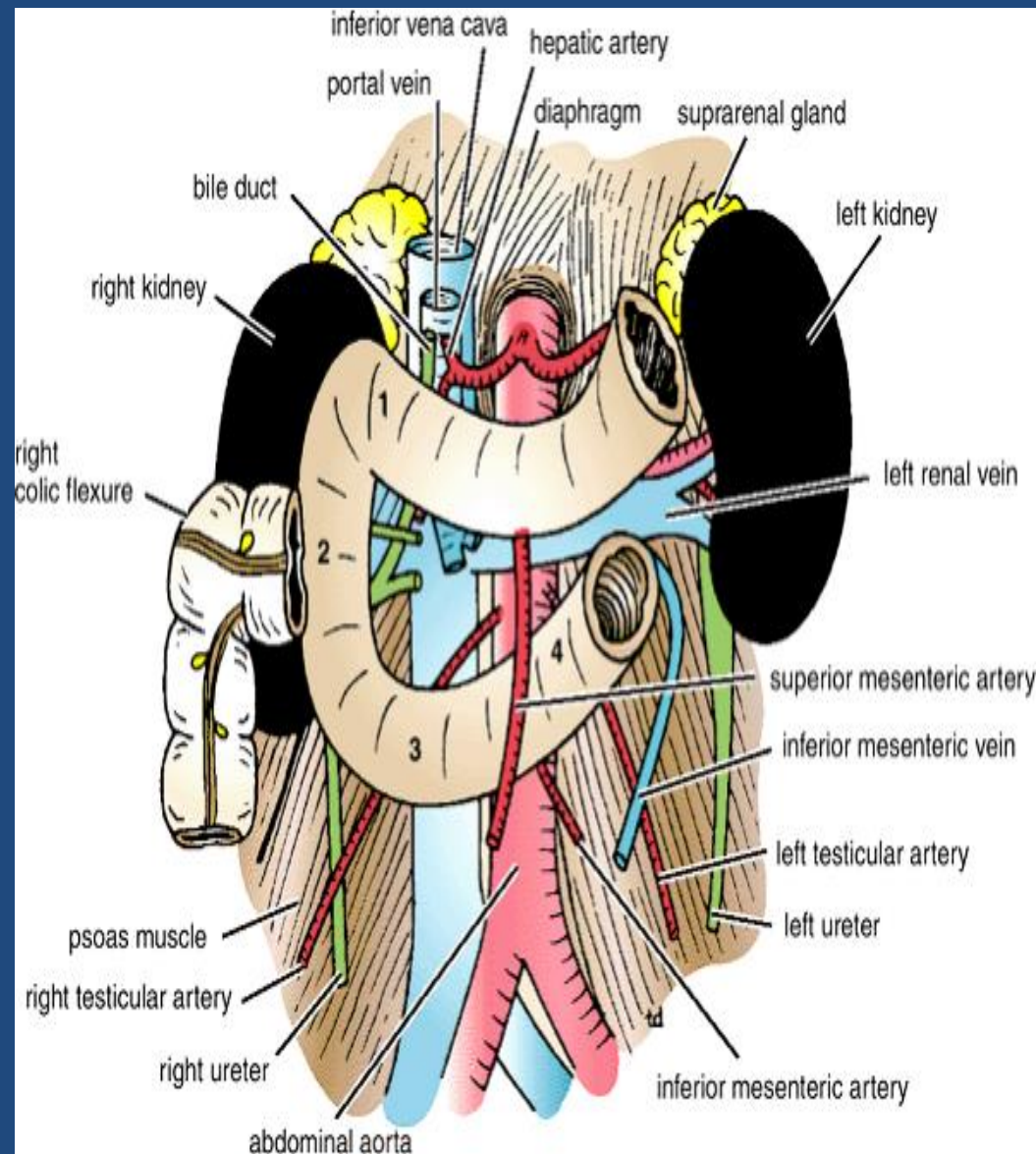
- The beginning of the root of the mesentery
- coils of the jejunum.

Post.

- Lt. psoas major
- the sympathetic chain
- left margin of the aorta.

Sup.

- Uncinate process of the pancreas.



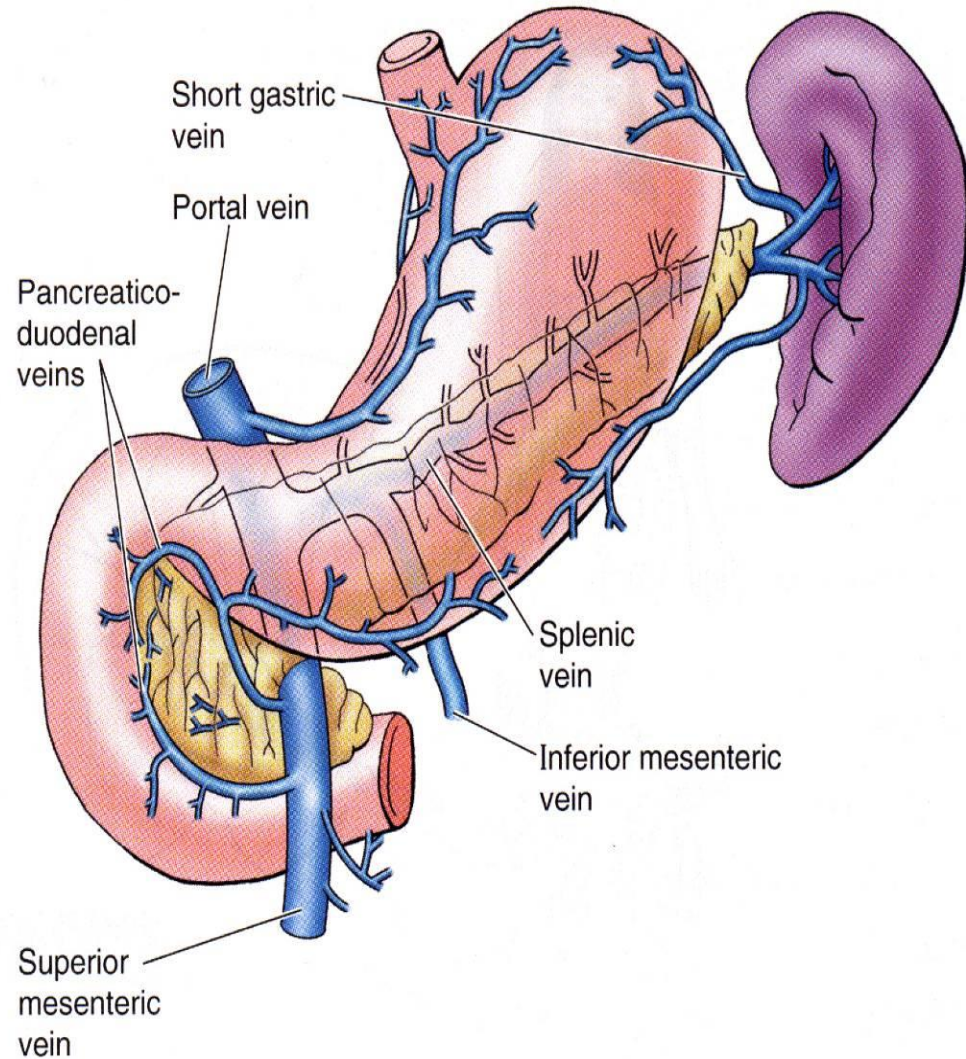
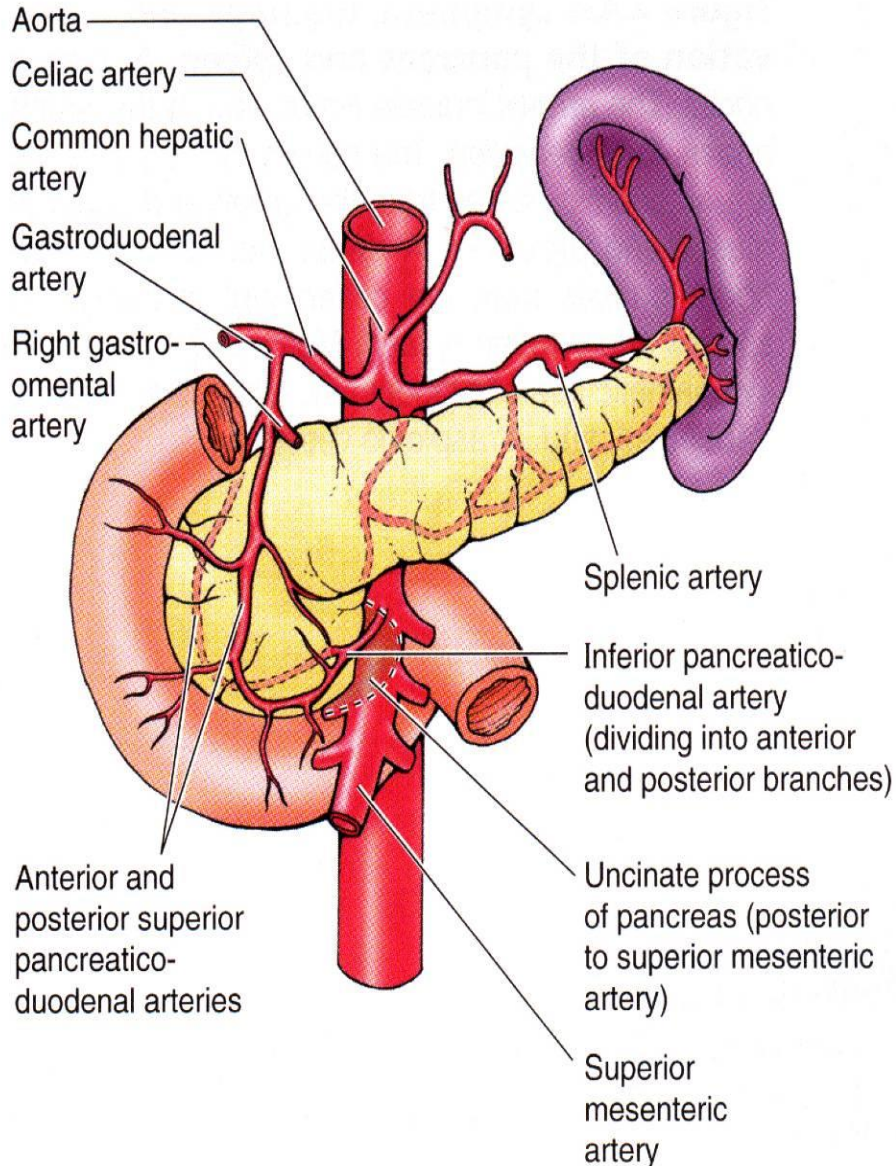
Blood supply of duodenum

- Arteries

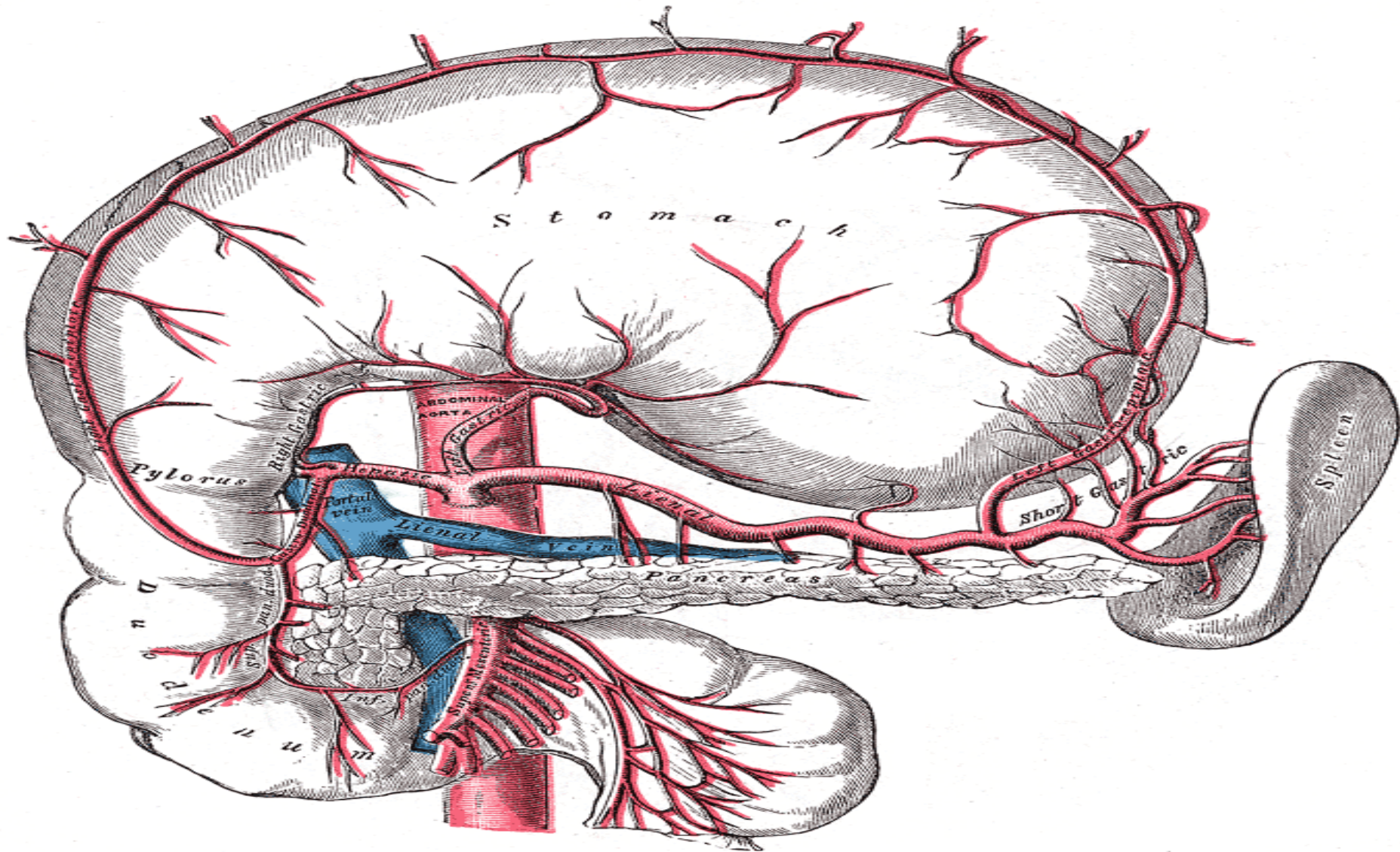
1- upper half (1st part + upper 1/2 of 2nd part) is supplied by the **superior pancreaticoduodenal artery**, a branch of the gastroduodenal artery .

2- The lower half (lower 1/2 of 2nd part + 3rd+4th part) is supplied by the **inferior pancreaticoduodenal artery**, a branch of the superior mesenteric artery

Arterial supply and venous drainage of the duodenum



Blood supply for duodenum

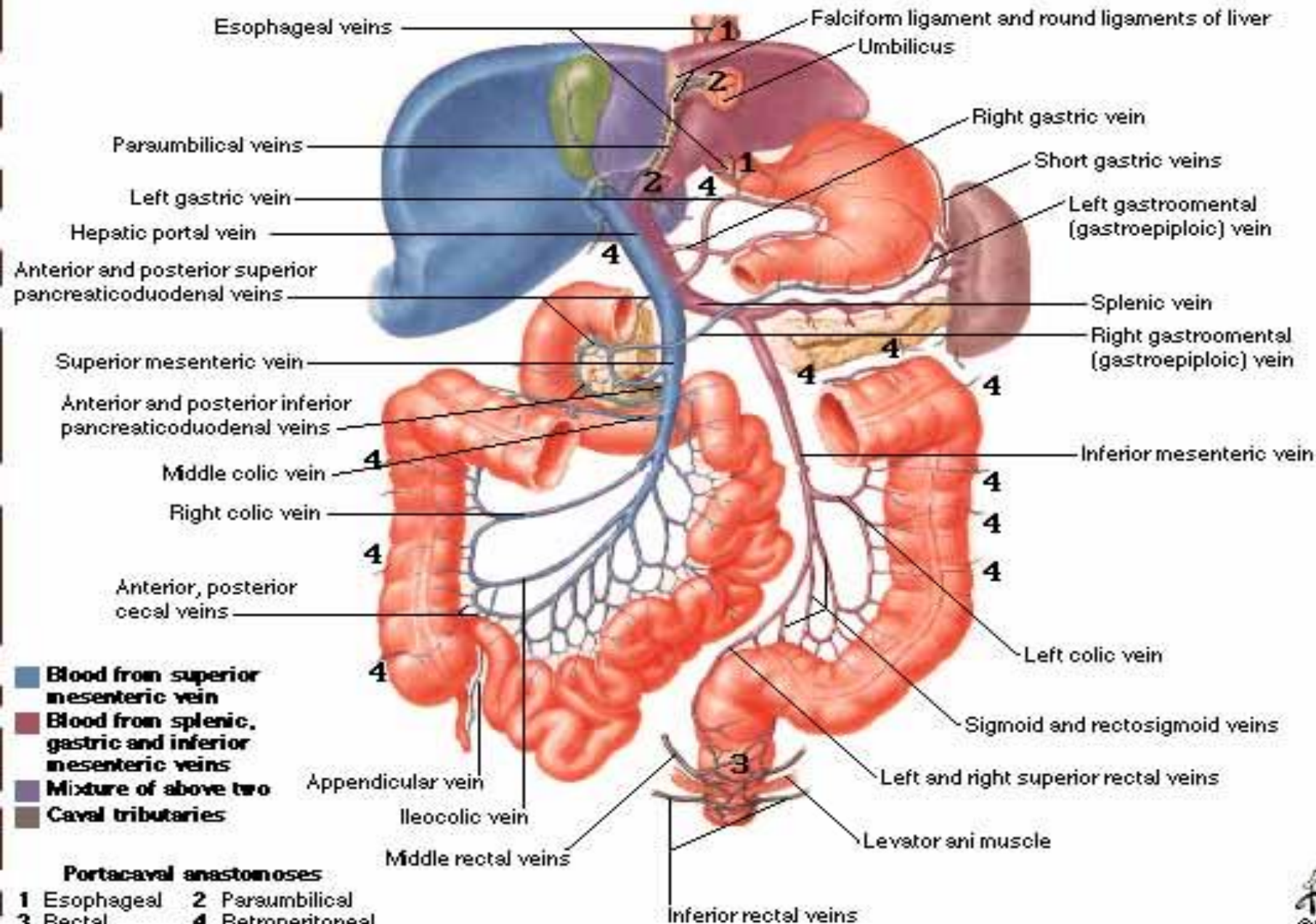


Veins of duodenum

- The superior pancreaticoduodenal vein drains into the portal vein
- The inferior vein joins the superior mesenteric vein .

Hepatic Portal Vein Tributaries

Portocaval Anastomoses



Lymphatic drainage

- The lymph vessels follow the arteries
- **drain upward** → via pancreaticoduodenal nodes → the gastroduodenal nodes → the celiac nodes
- **drain downward** → via pancreaticoduodenal nodes → the superior mesenteric nodes around the origin of the superior mesenteric artery.

Nerve supply

- Sympathetic nerve
- parasympathetic nerves from:
 - 1- The celiac plexus
 - 2- Superior mesenteric plexus.

Jejunum and Ileum

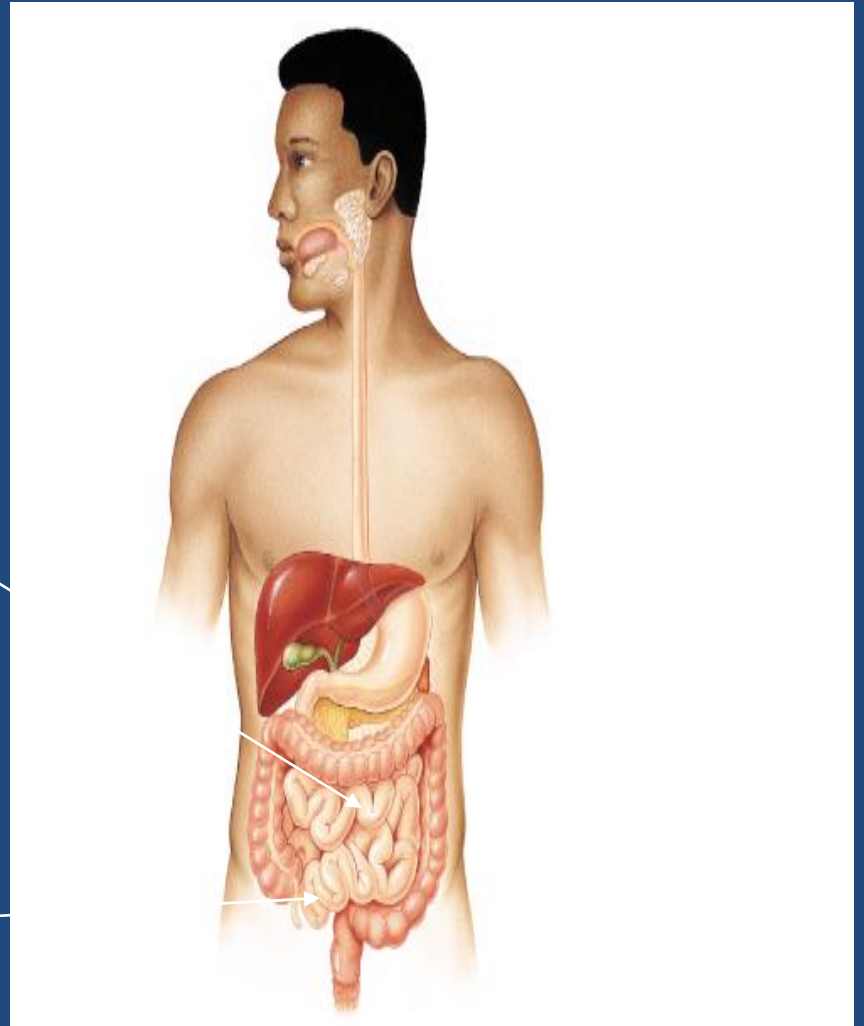
Location and Description

- The jejunum and ileum measure about 20 ft (6 m) long
- the upper two fifths is the jejunum & the lower 3/5 is the ileum
- Each has distinctive features
- there is a gradual change from one to the other
- The jejunum begins at the **duodenojejunal** flexure
- the ileum ends at the **ileocecal junction**.
- The coils of jejunum and ileum are freely mobile and are attached to the posterior abdominal wall by a fan-shaped fold of peritoneum known as the mesentery of the small intestine

SMALL INTESTINES ANATOMY

jejunum

ileum



Small Intestine

Stomach

Duodenum

Jejunum

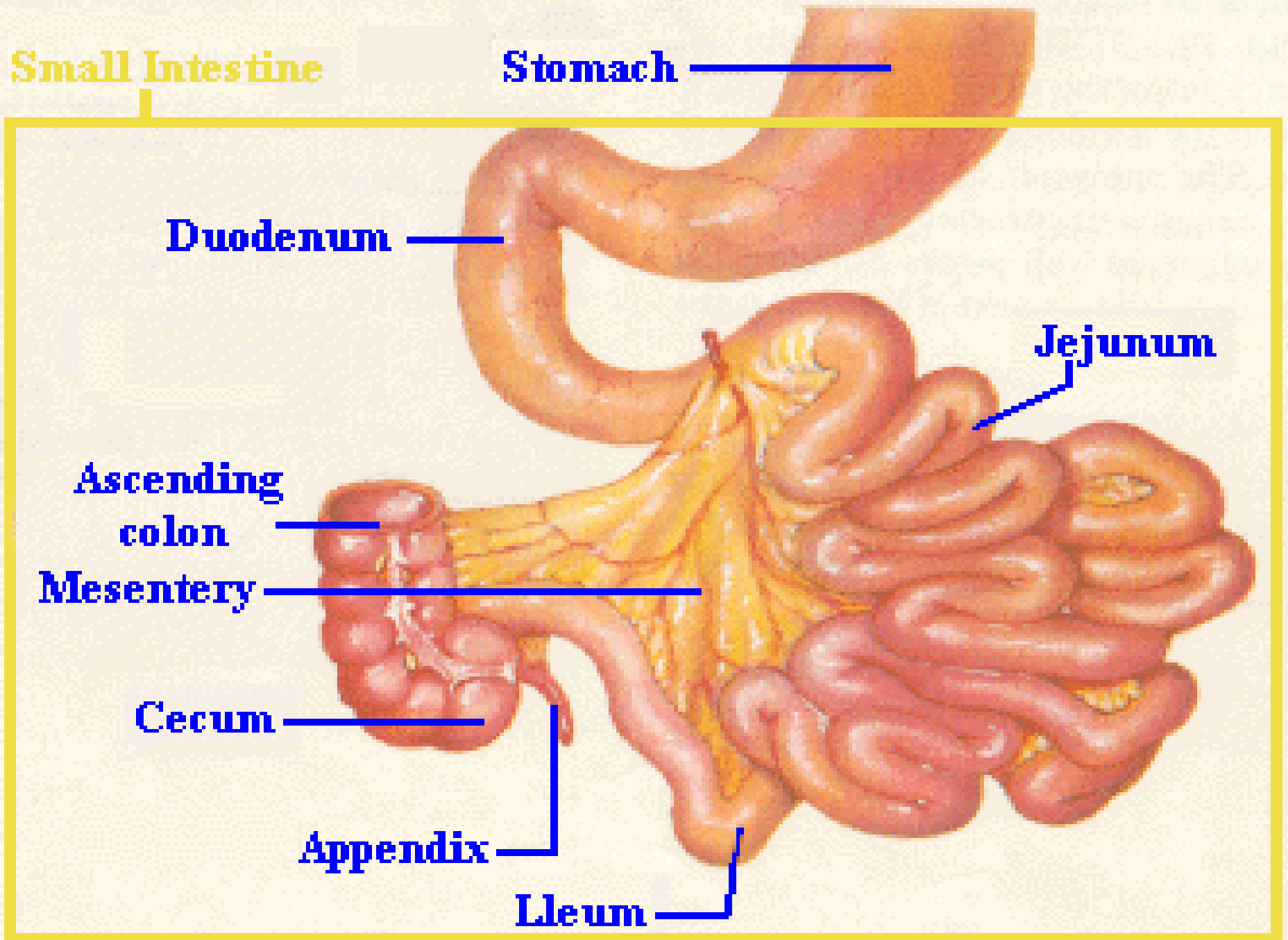
**Ascending
colon**

Mesentery

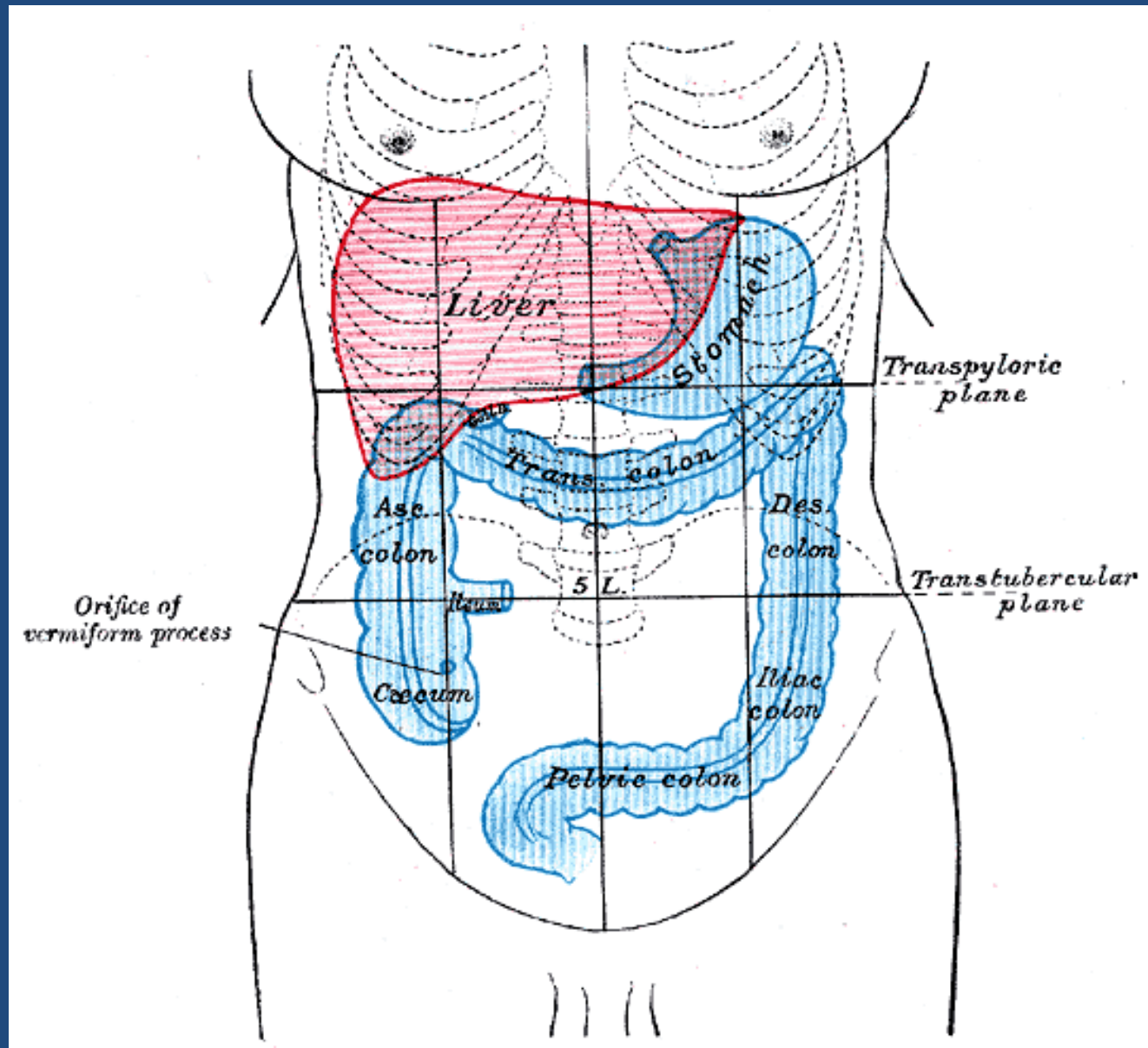
Cecum

Appendix

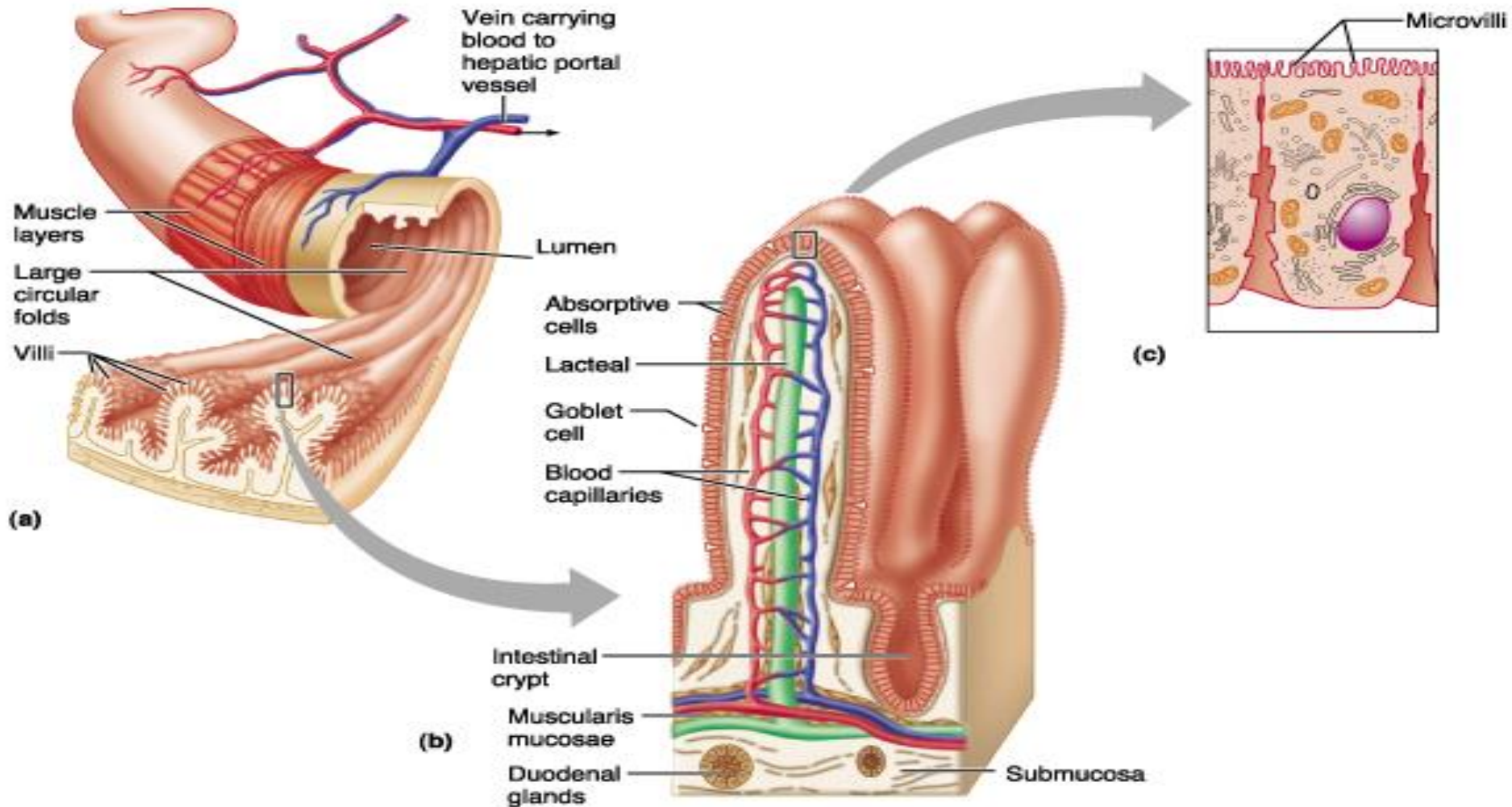
Ileum



Anatomical position of small intestine



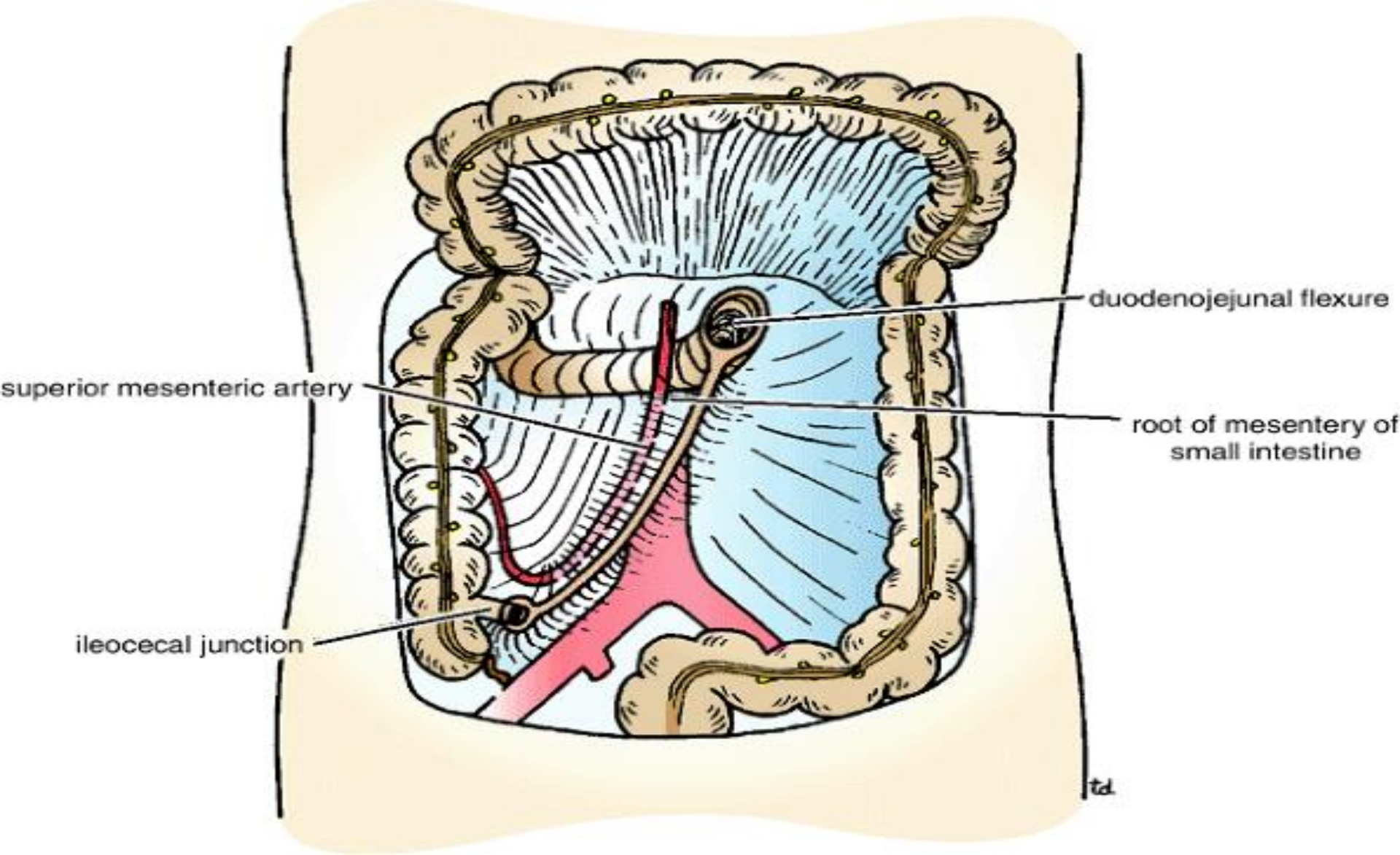
Structure of the Villi in the Small Intestine

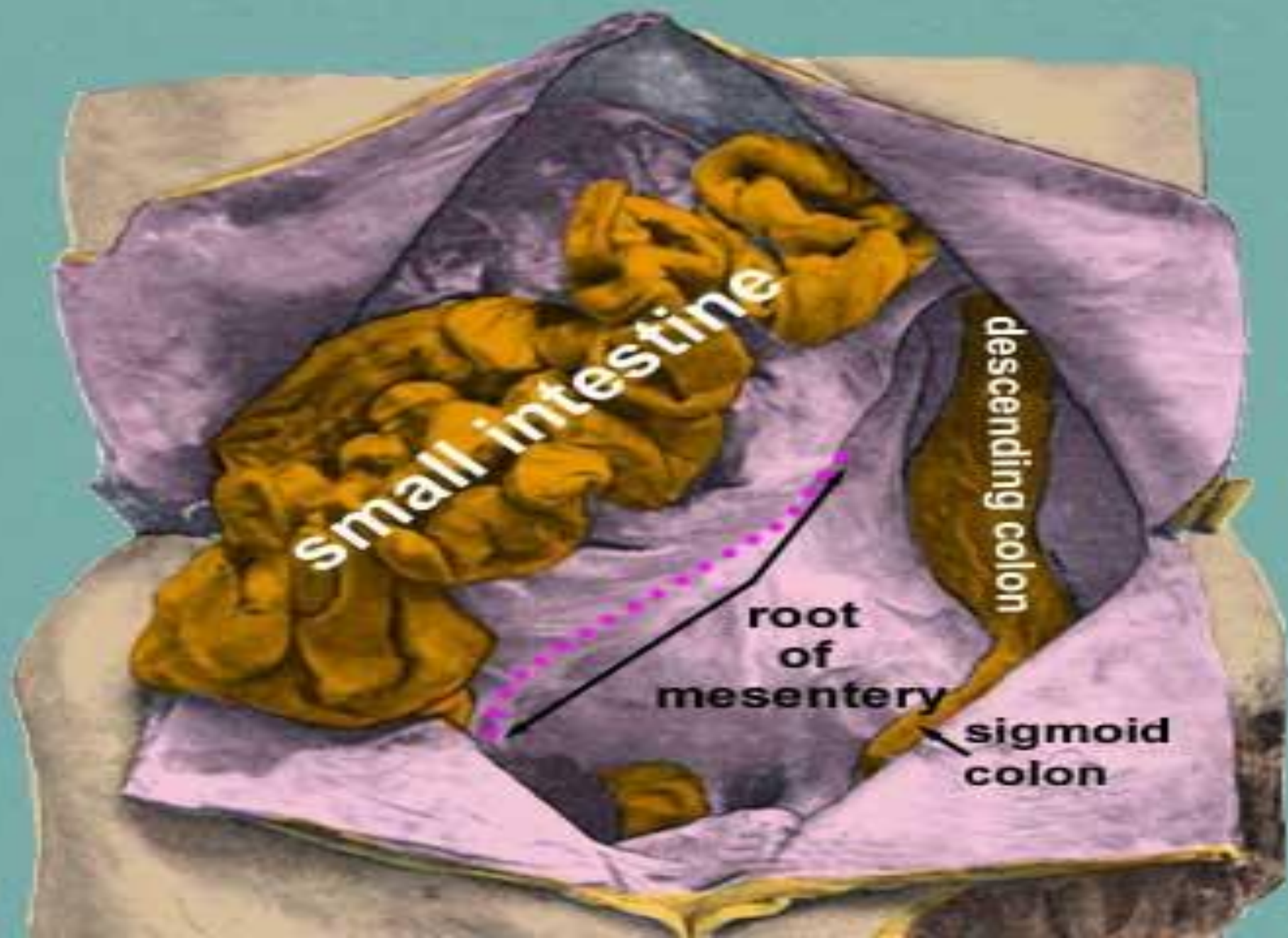


mesentery of the small intestine

- fan-shaped fold of peritoneum
- The long free edge of the fold encloses the mobile intestine.
- The short root of the fold is continuous with the parietal peritoneum on the posterior abdominal wall
- Along a line that extends downward and to the right from the left side of the second lumbar vertebra to the region of the right sacroiliac joint

Root of the mesentery





Contents of the mesentery

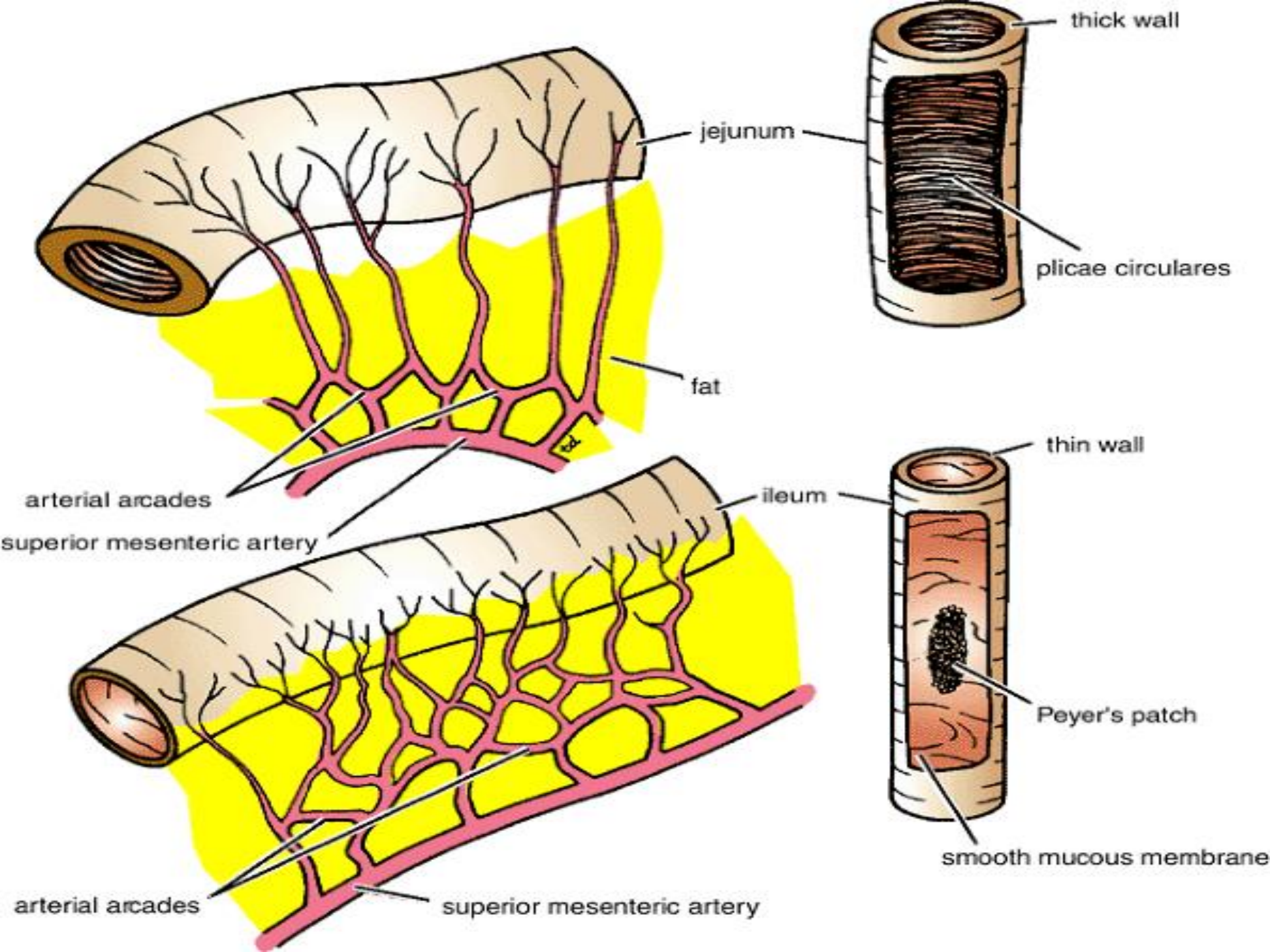
- The branches of the superior mesenteric artery and vein
- Lymphatic vessels & lymphatic nodes
- nerves

Difference between Jejunum & Ileum

	jejunum	Ileum
length	Proximal 2/5	Distal 3/5
site	in the upper part of the peritoneal cavity below the left side of the transverse mesocolon	in the lower part of the cavity and in the pelvis
wall	thicker wall & redder	Thinner & less redder
Arcades in mesentery	<ul style="list-style-type: none">- simple, only one or two arcades- with long infrequent branches- Long vasa recta	<p>numerous short terminal vessels arise from a series of three or four or even more Arcade</p> <ul style="list-style-type: none">- Short vasa recta
Fat in mesentery	<ul style="list-style-type: none">- the fat is deposited near the root- it is scanty near the intestinal wall- Less in amount → appear window	<ul style="list-style-type: none">- the fat is deposited throughout mesentery- Big amount- No window appear

Difference between Jejunum & Ileum

	jejunum	Ileum
Diameter	wider	smaller
villi	numerous	Less numerous
Plicae circularis(the permanent enfolding of the mucous membrane& submucosa	They are: 1- larger 2- more numerous 3- closely set	they are: 1- smaller 2- more widely separated 3- in the lower part they are absent .
Lymphatic follicles	No or few	Aggregations of lymphoid tissue (Peyer's patches) are present in the mucous membrane

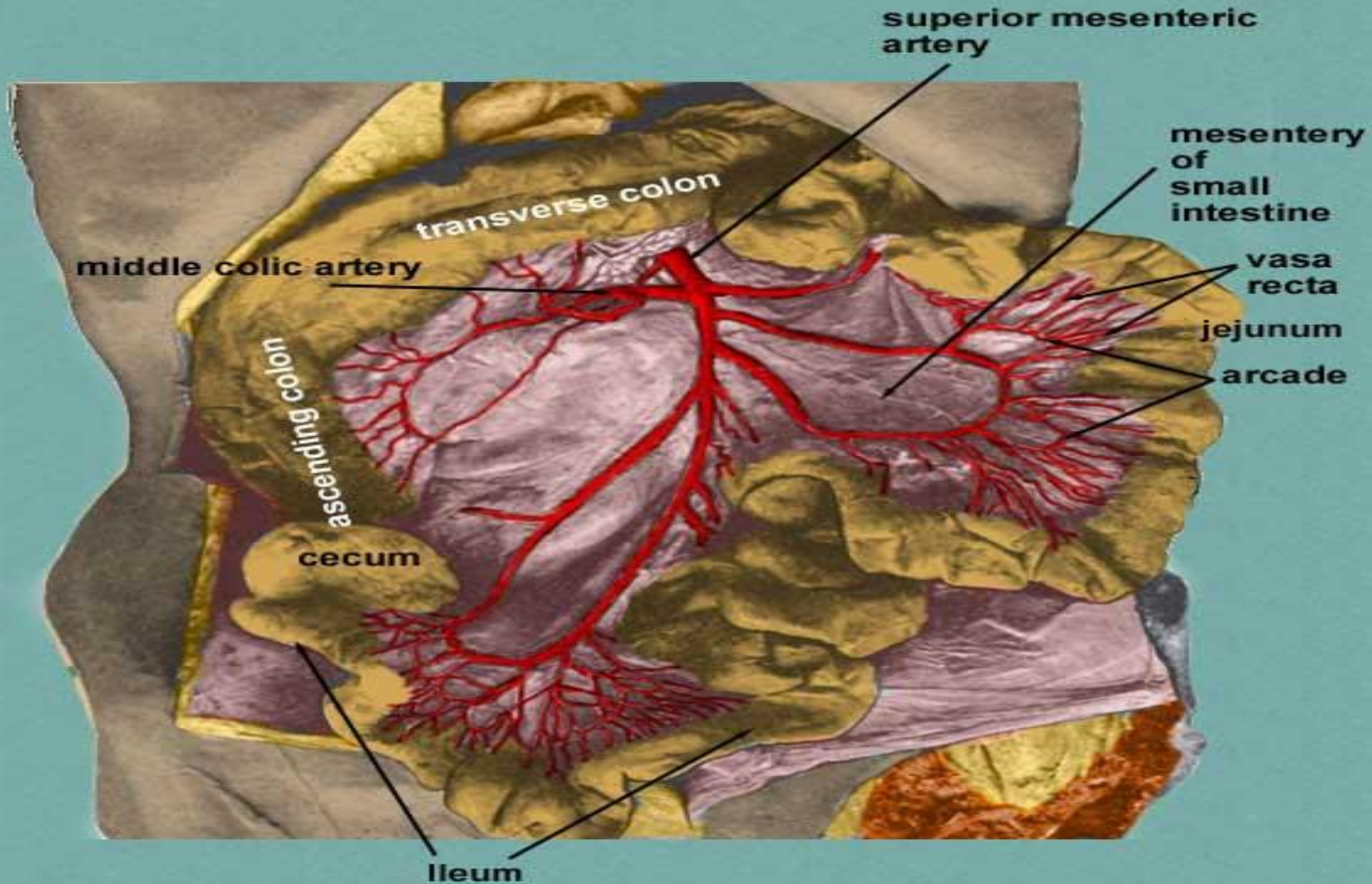


Blood supply of Jejunum & Ileum

Arteries:

- The arterial supply is from branches of the **superior mesenteric artery** .
- The intestinal branches arise from **the left side** of the artery and run in the mesentery to reach the gut.
- They anastomosis with one another to form a series of **arcades**.
- The lowest part of the ileum is also supplied by **the ileocolic artery**.

Blood supply for jejunum & Ileum



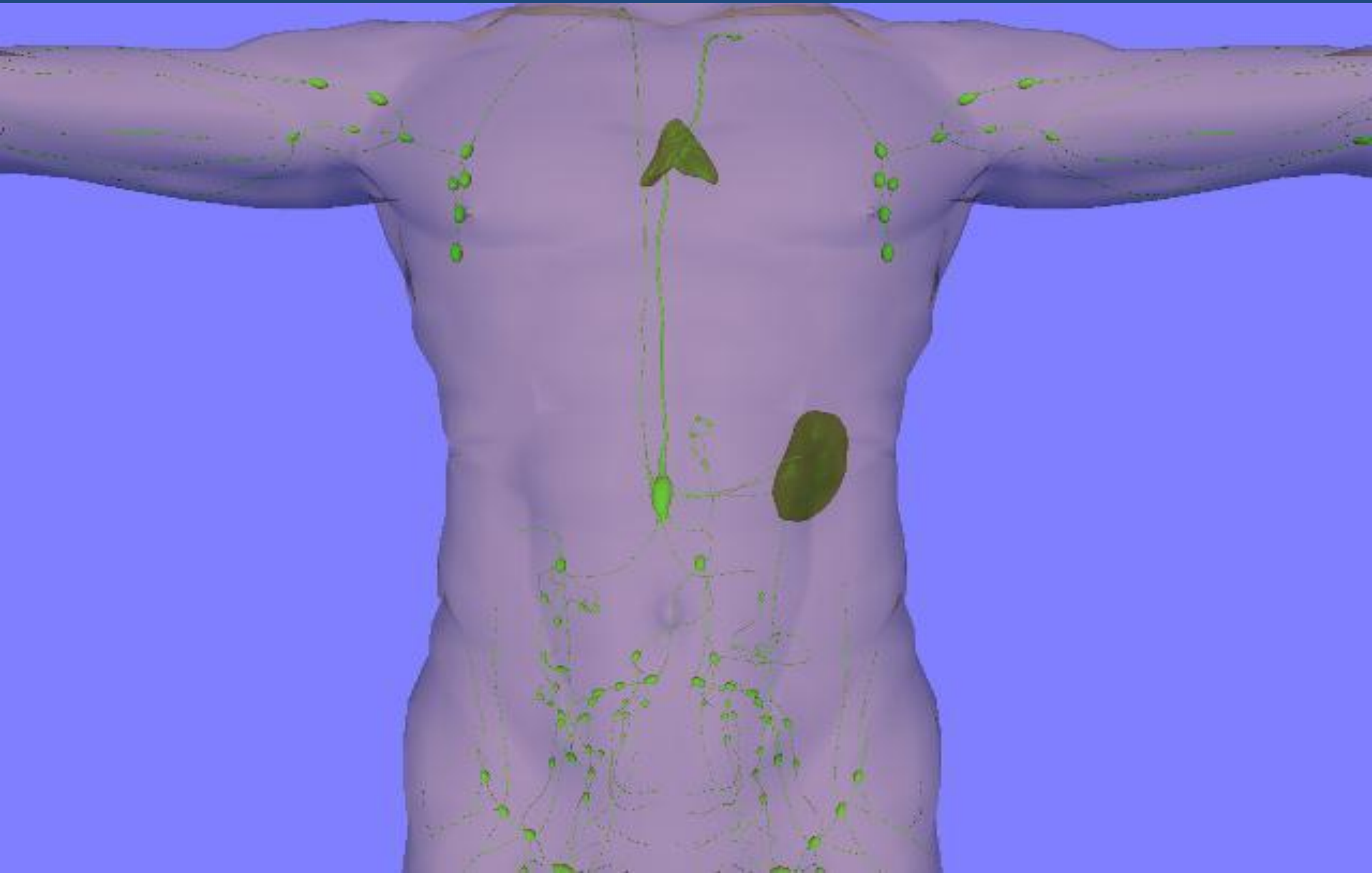
Veins:

- The veins correspond to the branches of the superior mesenteric artery
- Drain into the superior mesenteric vein.

Lymphatic Drainage of jejunum & ileum

- The lymph vessels pass through many intermediate mesenteric nodes
- Finally reach the superior mesenteric nodes → around the origin of the superior mesenteric artery.

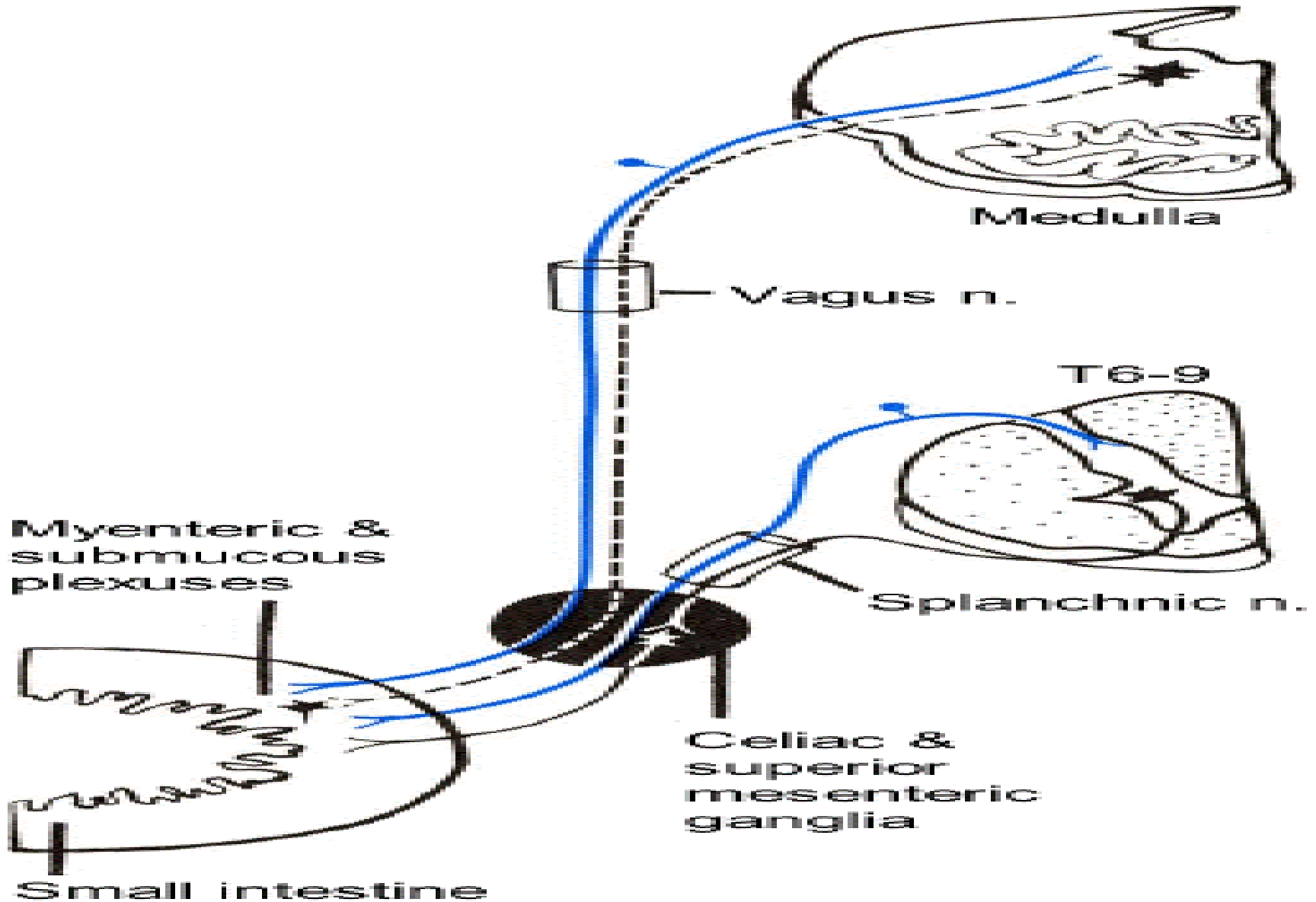
Lymph Drainage of jejunum & ileum



Nerve Supply of jejunum & Ileum

- The nerves are derived from the sympathetic and parasympathetic (vagus)
- Nerves from the superior mesenteric plexus.

Nerve supply for small intestine



Congenital anomaly of small intestine

Meckel's Diverticulum:

- a congenital anomaly of the ileum
- Present in 2% of people
- 2 feet from ileocecal junction
- 2 inch long
- contains gastric or pancreatic tissue
- Remains of vitelline duct of embryo

Meckel's Diverticulum

